

Setting the clearance between the hook and the shuttle /hook/ cover

Unscrew the shuttle /hook/ cover and substitute the gauge 41 11 649 for the hook. Note! When the three shoulder screws are retightened this must be done with slight pressure against the holders.

Loosen the three screws 5 retaining the holders.

Adjust the play by moving the holders in the desired direction. This operation is done in the following two steps.

- 1/ Adjust the height of the holders 1 and 3. This is done simultaneously by carefully pushing inwards with the finger tips placed on the shoulder screws 41 10 699, until these screws stop against the shuttle /hook/ cover. Lock the two holders in the arm by means of the screws.
- 2/ Adjust the height of the holder 2. To prevent excessive play, apply slight pressure on the hook cover at point 4. This will lift the holder 2 to the correct position and at the same time control the clearance at holder 2. Lock the holder in the arm by the screw.

Before putting back the hook an additional control should be done to check that the correct clearance has been obtained.

Try with slight pressure on the gauge to see that it does not get jammed and that there is no play at the three holders. Note that the driver has a couple of grooves. Do not check the shuttle /hook/ clearance when such a groove is exactly in front of a holder. This is to ensure the true alignment of the gauge during the setting and the after-control. The gauge should, at a slow rotation, give a slight friction.

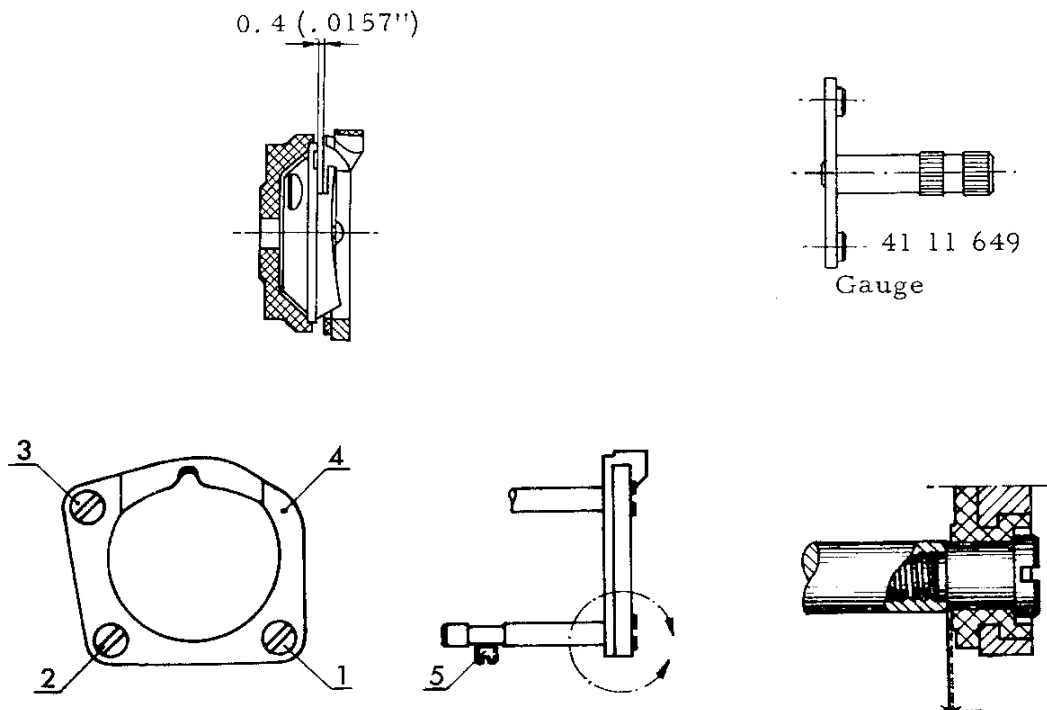


Fig. 28

Play between shoulder
screw and shuttle cover