

Jump Thread Trim

System Program Upgrade

for Memory Craft 11000 Version 2.0

[NEXT >>](#)

1. System Program Upgrade

Please read the following instructions and important notice carefully before upgrading the Memory Craft 11000.

Important Notice

- This update program is only available for machines upgraded to Version 2.0. Before starting the upgrade, make sure that "Ver. 2.00" appears in the lower right portion of the opening window. The use of this upgrade on a previous version will corrupt the system program and require reinstallation of Version 1.31.
- Insert only the media containing this upgrade program, and remove any other media from the machine before starting the upgrade.

[NEXT >>](#)

2. Preparing to Upgrade

[<< BACK](#)

[NEXT >>](#)

You need an **ATA PC Card** or a **USB Memory Key** to upgrade the Memory Craft 11000.

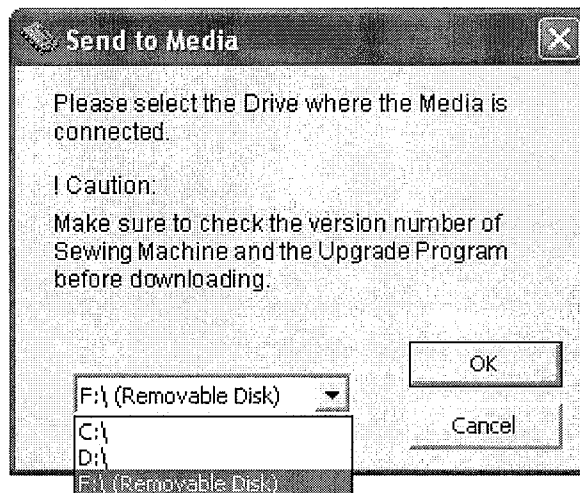
Note 1: We strongly recommend the use of FAT 16 formatted memory devices.

To check if your memory device is FAT 16: Right click on the drive (i.e. E:) of the device you would like to check and select **Properties**. Your media is FAT 16 if "FAT" is listed as the File System.

Note 2: We recommend using high-quality memory devices by well-known manufacturers such as Sandisk.

Note 3: The update media (ATA PC Card or USB Memory Key) created in this step can be used more than once.

- a. Insert the media (ATA PC Card or USB Memory Key) into your computer.
- b. Click the [COPY] button below to start up the File Copy Utility.
- c. The **Send to Media** dialog box will open. Select the **drive** where the media is inserted and click the **OK** button.



- d. After the file has been copied to the media, safely remove the media from your computer.

Important:

It is strongly recommended that you understand the following procedures before you start upgrading the programs. After thoroughly familiarizing yourself with the procedures, proceed to the next step.

[<< BACK](#)

[NEXT >>](#)

3. Starting up your Memory Craft 11000 in Upgrade Mode

[<< BACK](#)

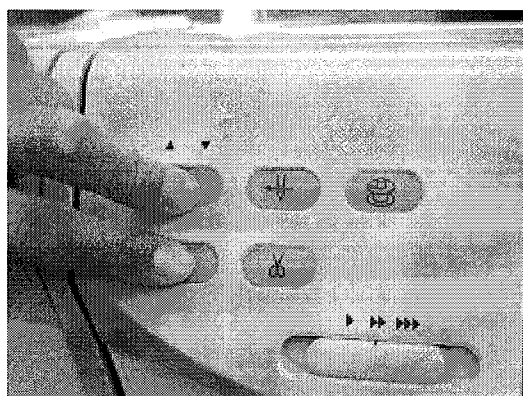
[NEXT >>](#)

Insert the media into the PC Card Slot or USB Port of your Memory Craft 11000.

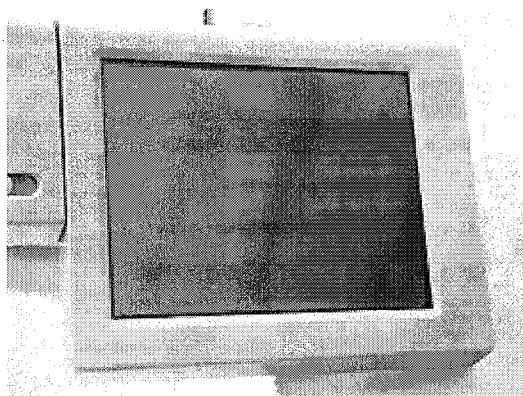
Important Notice

Insert only the media containing the upgrade program and remove any other media from the machine before starting the upgrade.

Press and hold the **Lock Stitch button** and the **Needle Up/Down button** on your Memory Craft 11000 at the same time and turn the power switch ON.



Be sure to keep the buttons pressed for **at least 3 seconds** until the LCD screen shows the pale blue background.



[<< BACK](#)

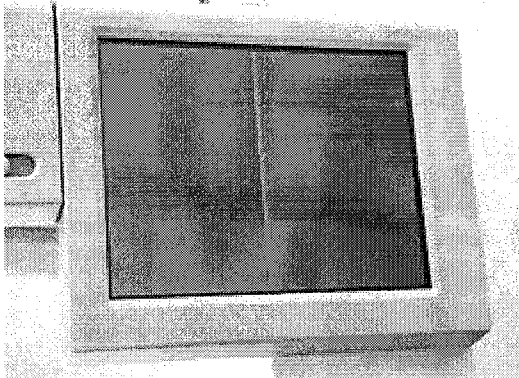
[NEXT >>](#)

4. Upgrading Process

[<< BACK](#)

[NEXT >>](#)

The **Color Bar** will appear on the machine's LCD screen and the upgrading process will automatically start.



The LCD screen on the Memory Craft will turn blue when the Upgrade is completed.

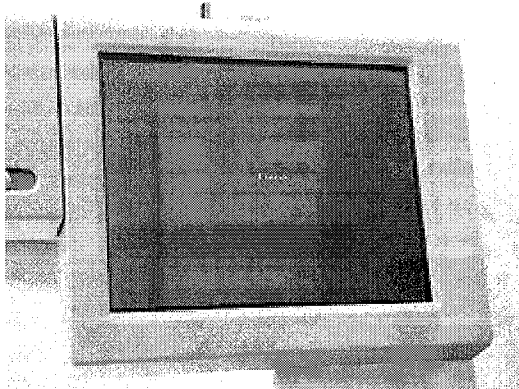
Important Notice

While the upgrading is in progress, the following actions are strictly prohibited.

- Turning the power switch OFF
- Disconnecting the media
- Pressing any buttons/keys

It will take **several minutes by ATA PC Card** to complete the upgrading.

* USB Memory Key may take longer.



Note: Avoid using large capacity media already storing a large number of folders and files. It may take an hour or more to finish the upgrading process if you use such media.

[<< BACK](#)

[NEXT >>](#)

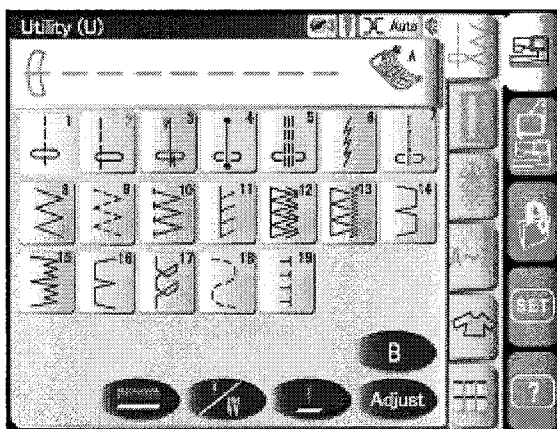
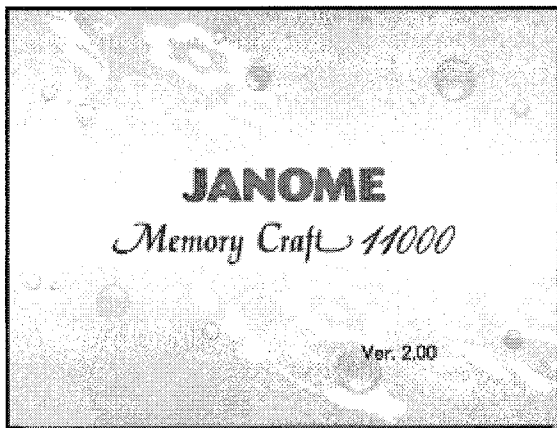
5. Restarting your Memory Craft 11000

[<< BACK](#)

[NEXT >>](#)

After upgrading is complete, turn the power switch OFF.

Wait for 5 seconds and turn it ON again.



Check that the screen displayed after the opening window is the Utility page in Ordinary Sewing Mode.

[<< BACK](#)

[NEXT >>](#)

6. Troubleshooting

[<< BACK](#)

[TOP >>](#)

If the upgrade could not be completed, please check the following:

- Make sure the media (ATA PC Card or USB Memory Key) is properly inserted.
- Make sure the upgrade file has been properly copied to the media.
- Make sure the media is FAT 16 formatted.
- Make sure you have not turned the power switch OFF or disconnected the media from the machine before upgrading was finished.

After checking the above points, try again from Step 2.

[<< Step 2](#)

[<< BACK](#)

[TOP >>](#)