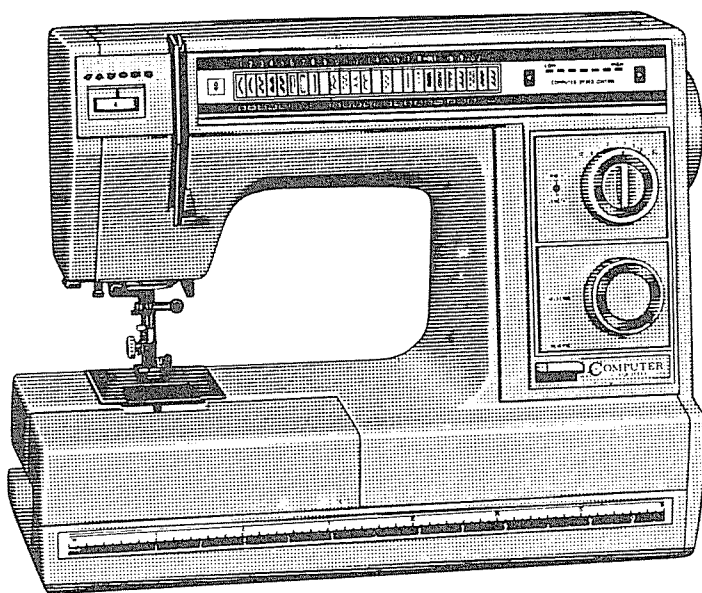


# *Servicing Manual*

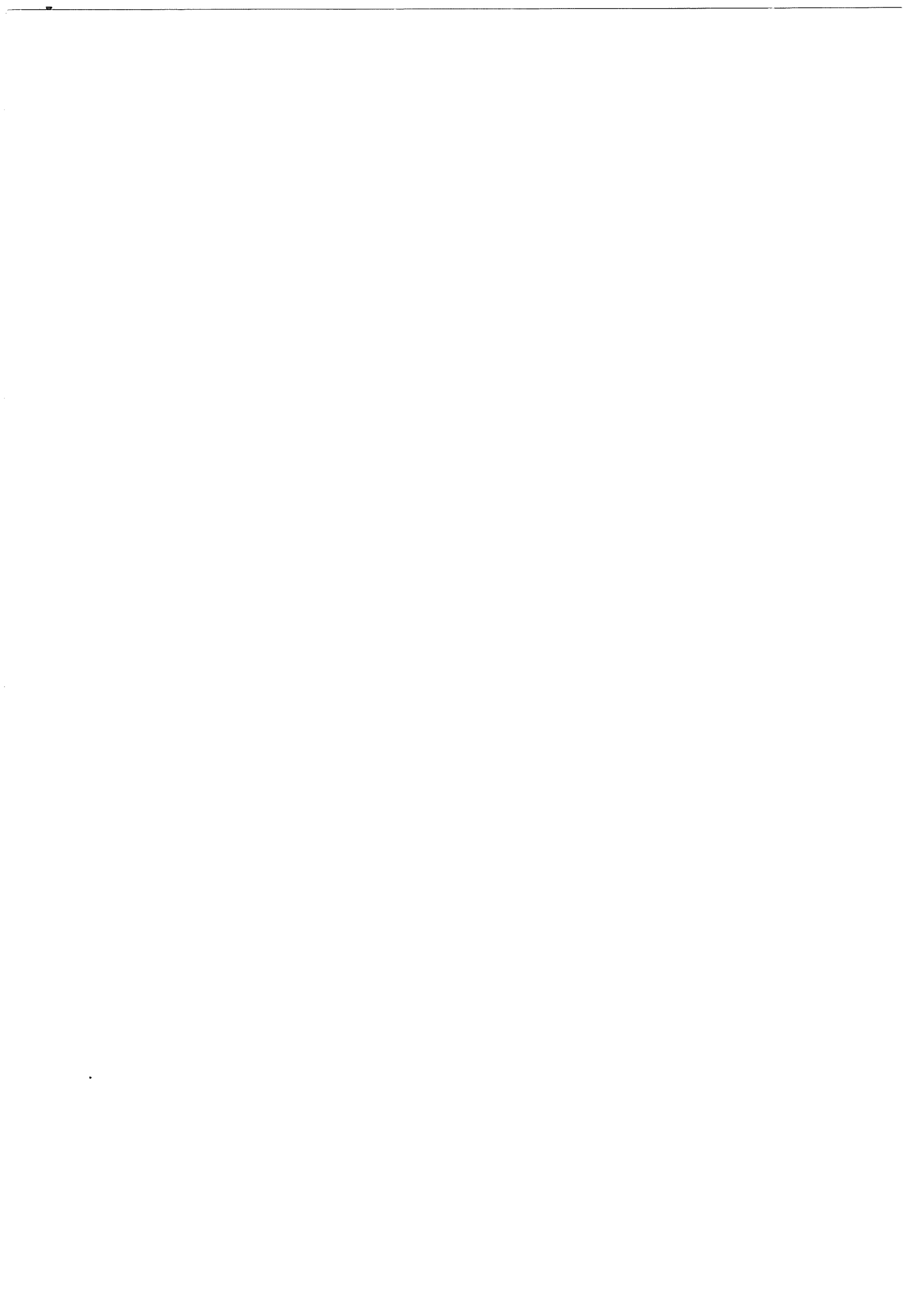
## **SX 2122**

 **COMPUTER**  
—EQUIPPED—



# C O N T E N T S

<u>TO CHANGE</u>	<u>Page</u>
Top cover .....	1
Face plate .....	2
Bed cover .....	2
Belt cover .....	3
Base .....	3
Front panel .....	4
UP/DOWN needle position plate .....	4
Machine socket .....	5
"B" plate .....	6
"C" plate .....	6
"D" plate .....	7
Fuse .....	8
Transformer .....	9
Motor .....	10
<u>TO ADJUST</u>	
Motor belt tension .....	11
Presser bar height .....	12
Feed dog height .....	13
Needle bar height .....	14
Needle swing .....	15
Needle drop position .....	16
Zero position of zigzag stitch .....	17
Needle position misalignment .....	18
Clearance between needle and ROTARY hook .....	19
Hook timing .....	20
Zero feed .....	21
Stretch stitch feed balance .....	22
Buttonhole feed balance .....	23
DIAGRAM OF THE CORD CONNECTORS .....	24
PARTS LIST .....	25-32
STANDARD ACCESSORIES AND ATTACHMENTS .....	33



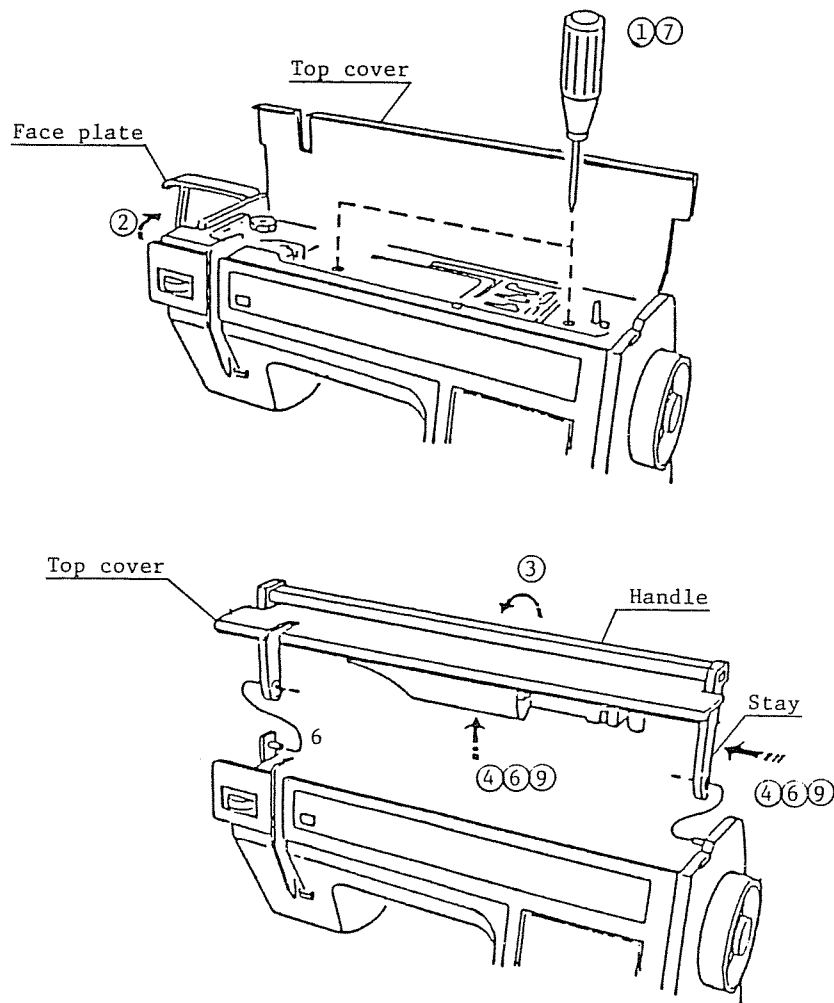
## TO CHANGE THE TOP COVER

### TO REMOVE

1. Turn off the power switch.  
Open the top cover lid, and remove the two set screws.
2. Open the face plate.
3. Raise the handle.
4. While lifting the top cover, push in the lower part of right hand side of handle stay and pull it up.
5. Remove the top cover unit.
6. Remove the handle.

### TO ATTACH

7. Insert the left hand side of handle stay into the supporter pin, and fold the handle down.
8. Put on the top cover, and raise the handle.
9. Push in the lower part of right hand side of handle stay to insert it into the supporter pin while lifting the top cover.
10. Tighten the two set screws.
11. Close the face plate.



## TO CHANGE THE FACE PLATE AND BED COVER

### FACE PLATE

#### TO REMOVE

1. Turn off the power switch.
2. Open the face plate.
3. Remove the two set screws.

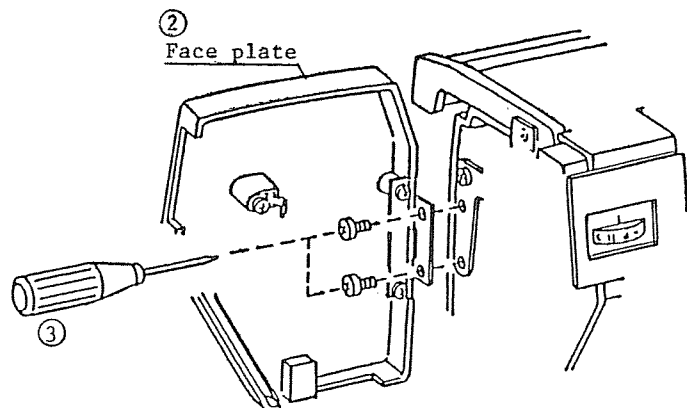
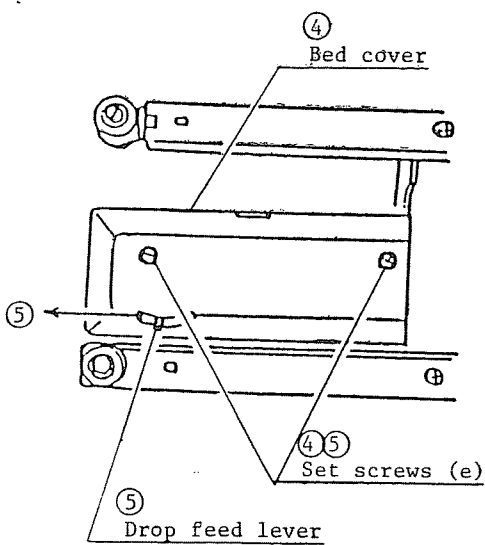
### BED COVER

#### TO REMOVE

4. Remove the set screws (e) to remove the bed cover after removing the base.

#### TO ATTACH

5. Make sure the drop feed lever is pushed to the left (up position). Insert the bed cover from the left hand side and tighten the set screws (e).



## TO CHANGE THE BELT COVER AND BASE

### BELT COVER

#### TO REMOVE

1. Remove the set screws (a) and pull up the belt cover to remove from the projection of handle supporter plate.

#### TO ATTACH

2. Insert the projections (b) of belt cover between the base and base spring, then pull up the belt cover and hook it on the projection of handle supporter plate. Tighten the set screw (a) firmly.

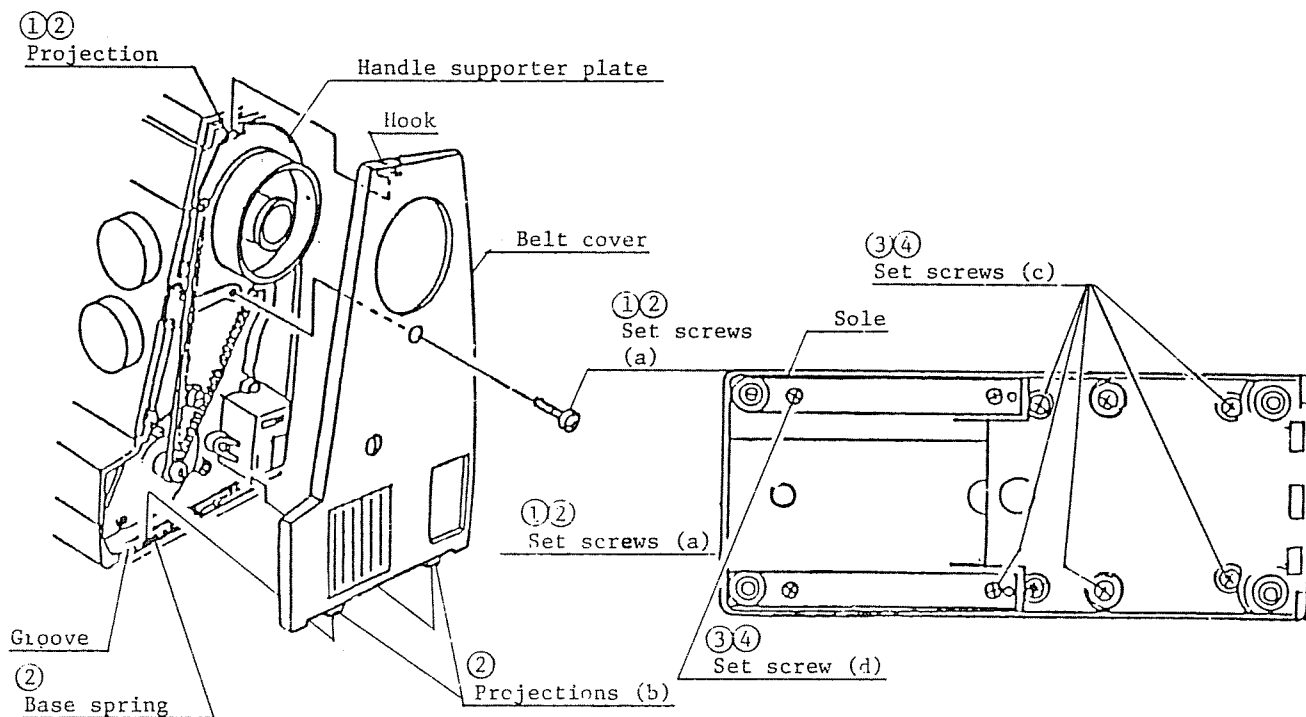
### BASE

#### TO REMOVE

3. Remove the extension table. Turn the machine to the back. Remove the set screws (c & d). Pull the base to the left while pulling the right hand side of base toward you.

#### TO ATTACH

4. Insert the base to the sole from the left side, then tighten the set screws (c & d). Do not tighten the set screws (d) too much, otherwise the threads on the base will be stripped.



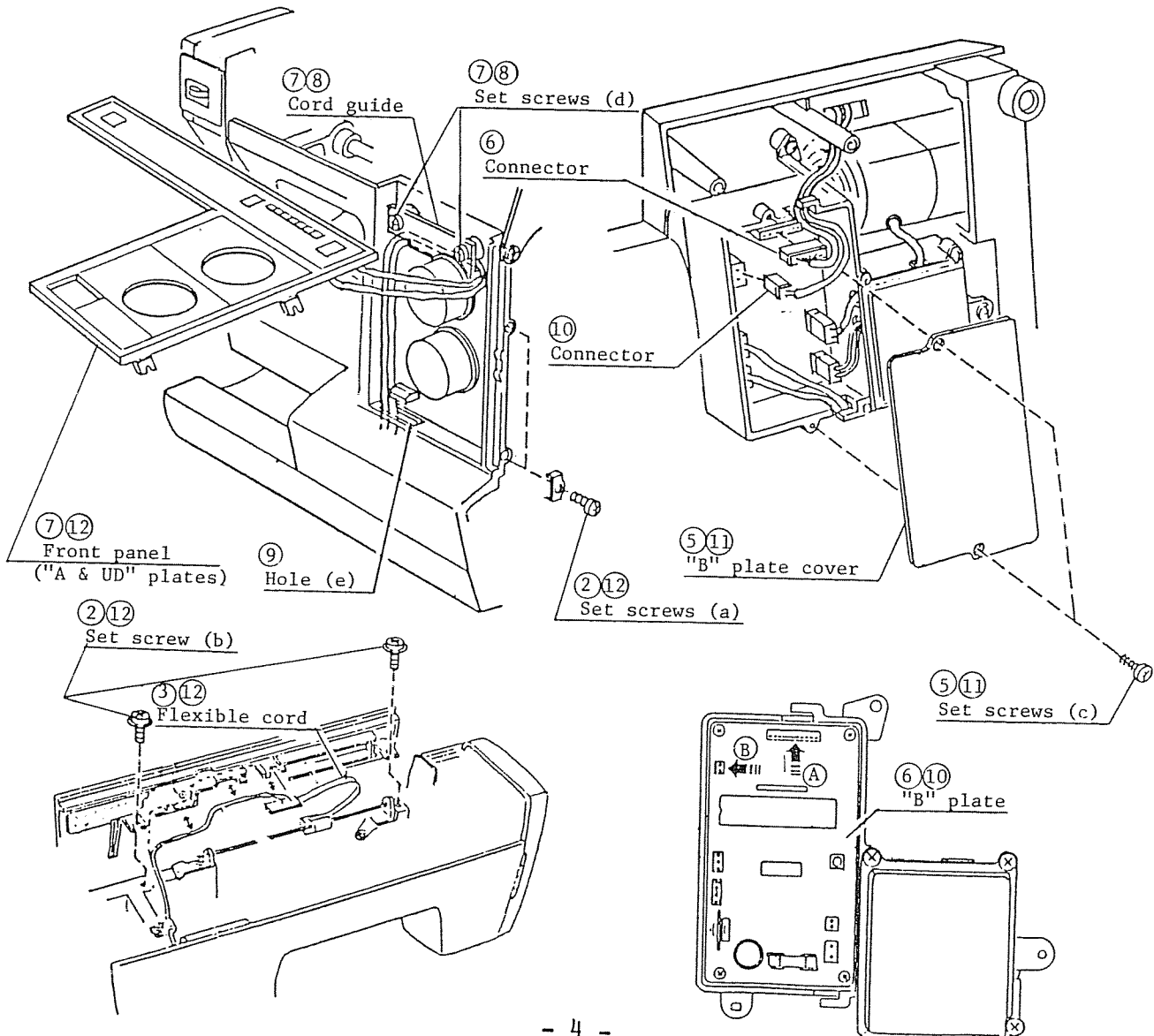
## TO CHANGE THE FRONT PANEL AND UD PLATE

### TO REMOVE

1. Turn off the power switch. Remove the top cover unit, belt cover, base (Refer to the pages 1 & 3) and rear sole.
2. Loosen the four set screws (a & b).
3. Remove the flexible cords from the front panel.
4. Turn the machine to the back, and remove the machine base.
5. Remove the set screws (c) to remove the "B" plate cover.
6. Pull out the connectors for "A" and "UD" plates.
7. Pull out the front panel, then remove the two cord guide set screws (d). Remove the front panel.

### TO ATTACH

8. Put the cords behind the cord guide plate, and tighten the two set screws (d).
9. Pass the two cords through the hole (e).
10. Connect the cord connector for "A" plate to A and the other one for UD plate to B.
11. Attach the "B" plate cover with the two set screws (c).
12. Insert the printed wiring board into the slot behind the front panel, and attach the front panel with the four set screws (a & b).
13. Attach the rear sole, top cover, belt cover and base. (Refer to the pages 1 & 3.)



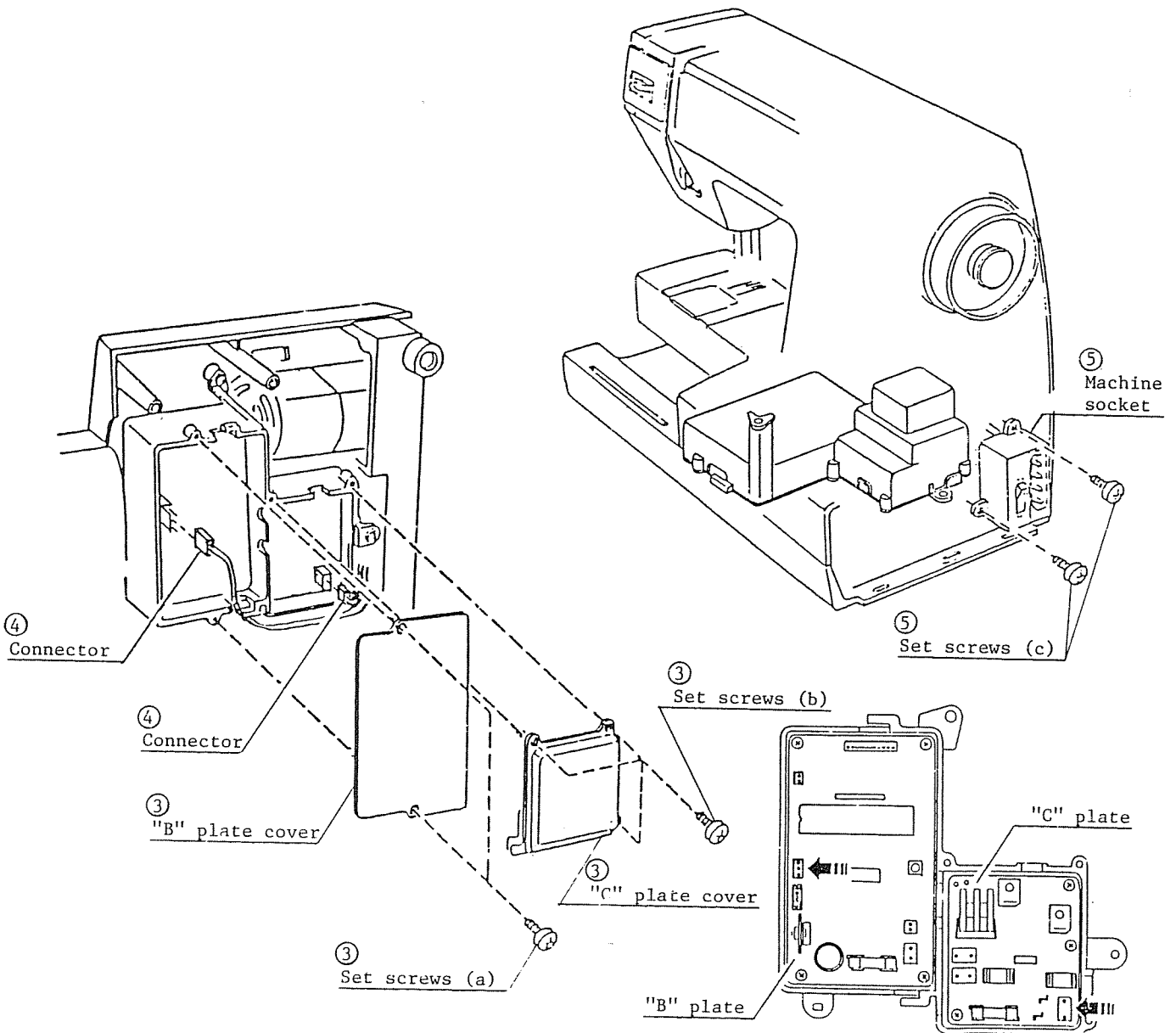
## TO CHANGE THE MACHINE SOCKET

### TO REMOVE

1. Turn off the power switch. Turn the machine to the back.
2. Remove the base, belt cover (Refer to the page 3.) and rear sole.
3. Remove the five set screws (a & b), and remove "B" and "C" plate covers.
4. Pull out the two cord connectors connected from the machine socket.
5. Remove the two set screws (c), and pull out the machine socket.

### TO ATTACH

Proceed the above sequence in reverse.





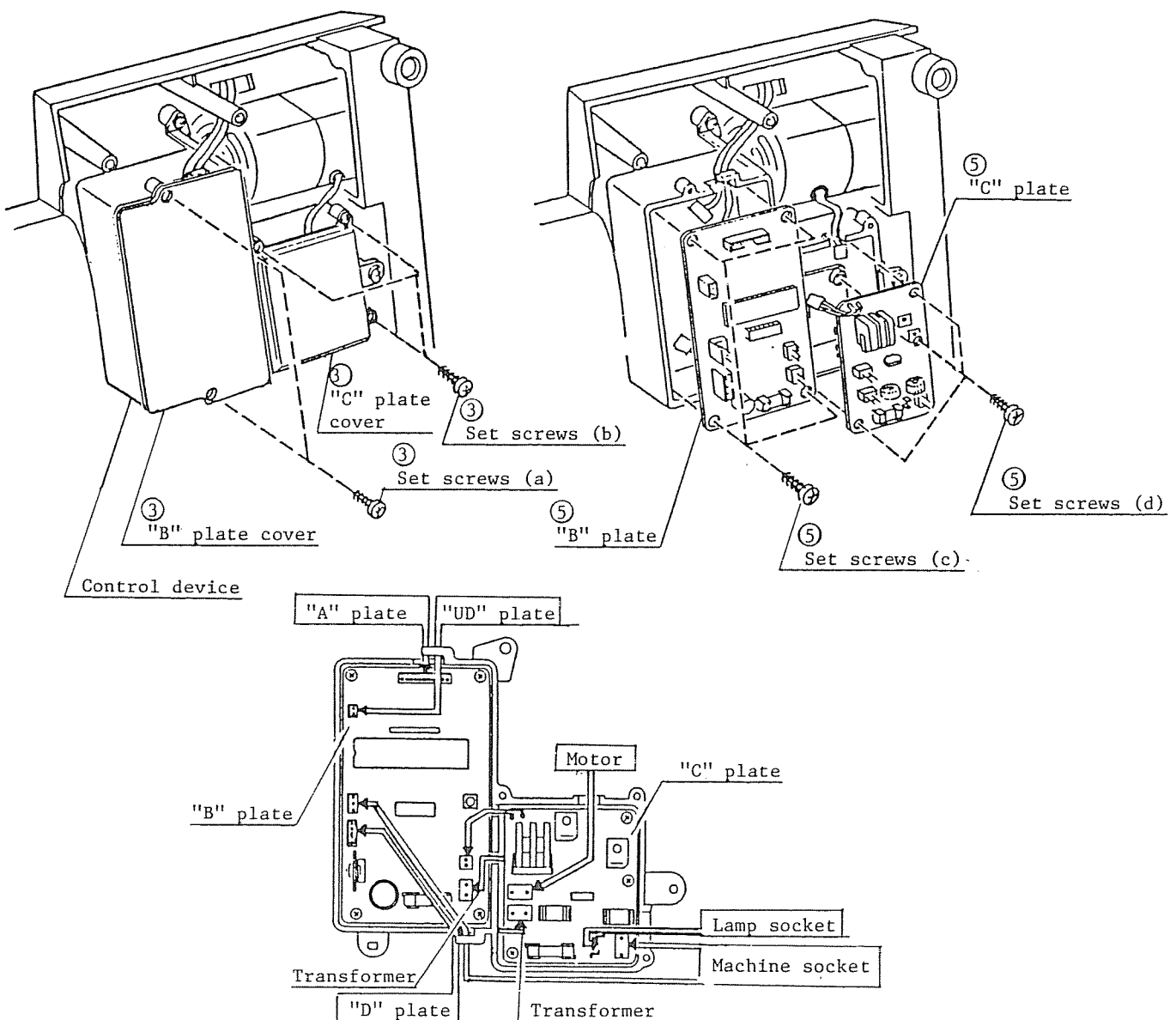
## TO CHANGE THE "B" and "C" plates

### TO REMOVE

1. Turn off the power switch. Turn the machine to the back.
2. Remove the base (Refer to the page 3.) and rear sole.
3. Remove the five set screws (a & b), then remove the two covers for "B" and "C" plates.
4. Pull out the connectors on the "B" and "C" plates.
5. Remove the seven set screws (c & d), and pull out the "B" and "C" plates.

### TO ATTACH

Proceed the above sequence in reverse.



## TO CHANGE THE "D" PLATE

### TO REMOVE

1. Turn off the power switch. Turn the machine to the back.
2. Remove the base (Refer to the page 3.) and rear sole.
3. Remove the two set screws (a), and remove the "B" plate cover plate. Then pull out the connector for "D" plate.
4. Raise the machine upright.
5. Remove the two set screws (b), and pull out the "D" plate frame unit. Then pull out the connector on the "D" plate.
6. Remove the two set screws (c), and remove the "D" plate from the "D" plate frame unit.

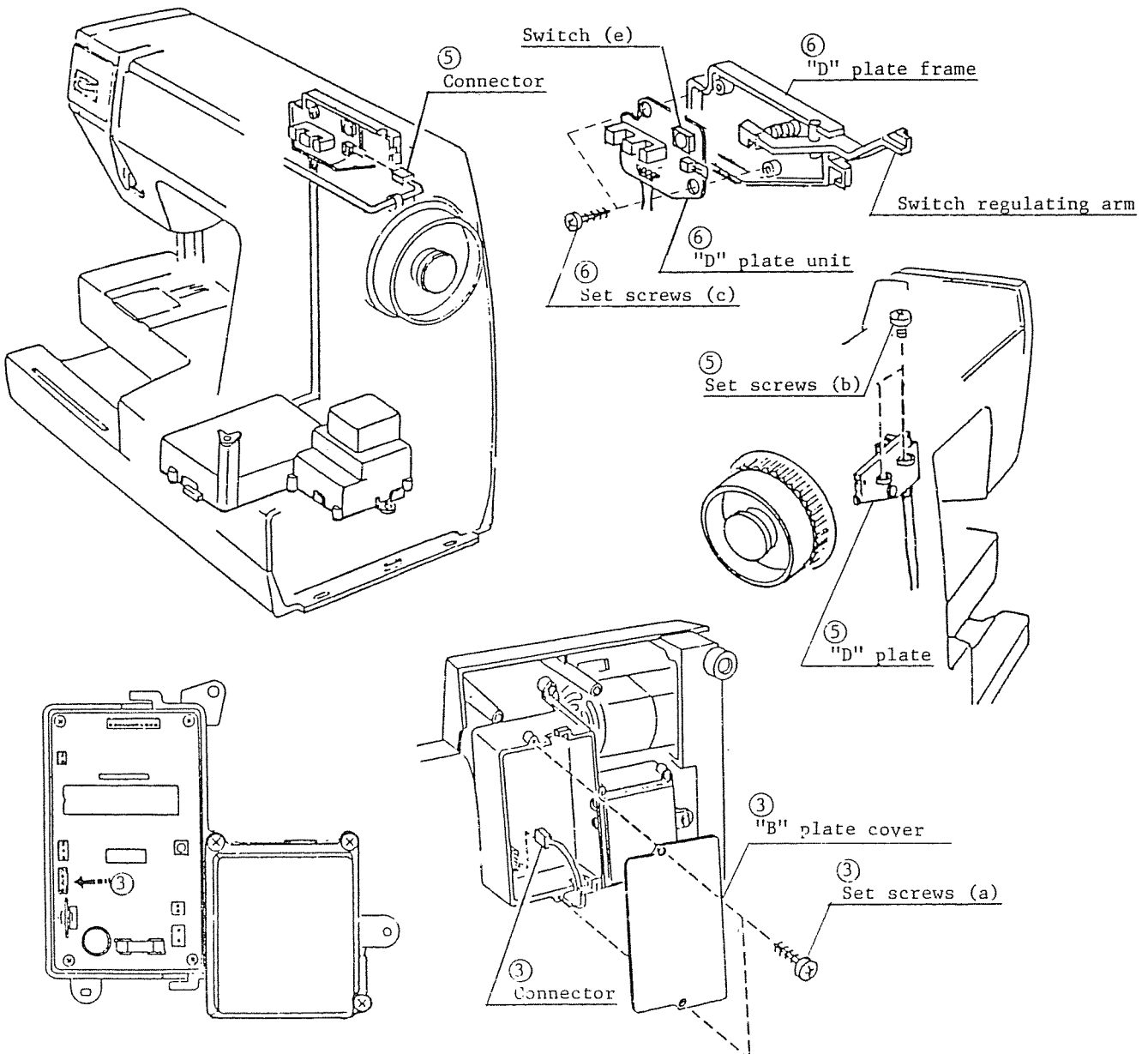
### TO ATTACH

Proceed the above sequence in reverse.

\*\*\* There should be clearance between the upper shaft sensor and the shield plates.

\*\*\* When the bobbin winder spindle is pushed to:

- the right, the switch regulating arm (d) should push the switch (e).
- the left, the switch regulating arm (d) should release the switch (e).



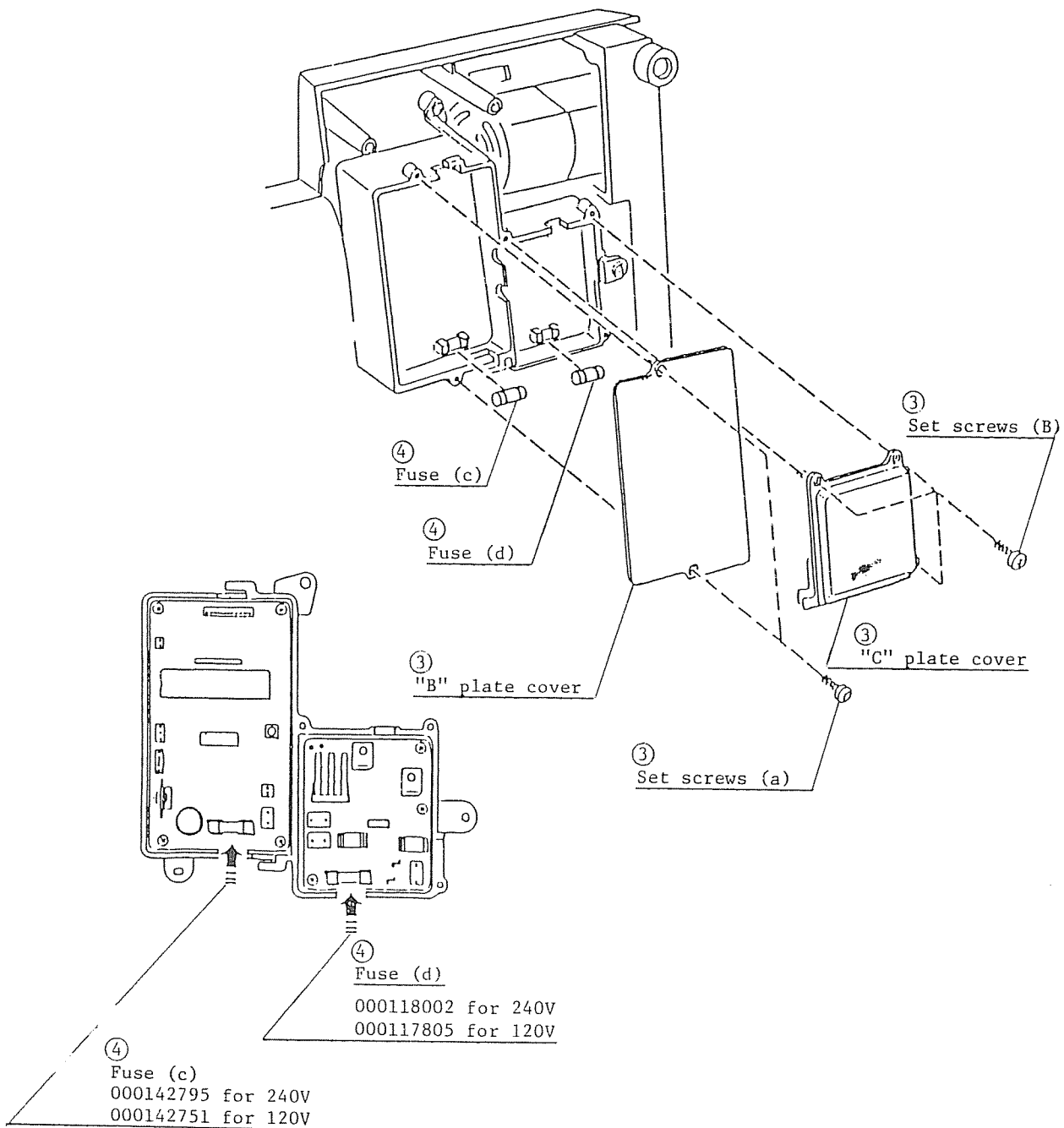
## TO CHANGE THE FUSE

### TO REMOVE

1. Turn off the power switch. Turn the machine to the back.
2. Remove the base (Refer to the page 3.) and rear sole.
3. Remove the five set screws (a & b), and remove the "B" and "C" plate covers.
4. Pull out the two fuses (c & d) in the "B" and "C" plates.

### TO ATTACH

Proceed the above sequence in reverse.



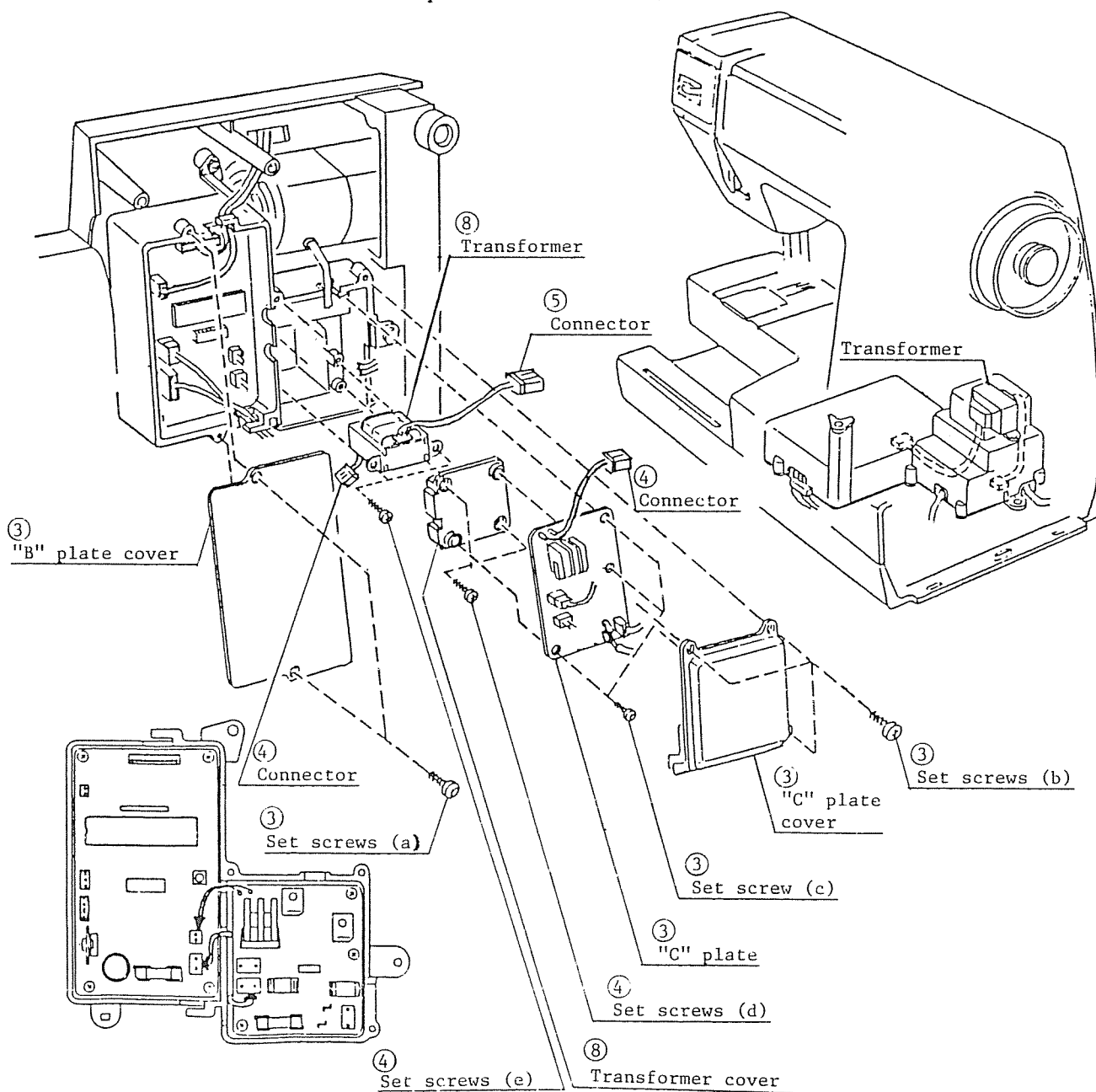
## TO CHANGE THE TRANSFORMER

### TO REMOVE

1. Turn off the power switch. Turn the machine to the back.
2. Remove the base (Refer to the page 3.) and rear sole.
3. Remove the five set screws (a & b), and remove the "B" and "C" plate covers.
4. Pull out the two cord connectors connected from "C" plate and transformer.
5. Pull out the cord connectors connected from the transformer.
6. Remove the three set screws (c).
7. Pull out the "C" plate.
8. Remove the two set screws (d), and remove the transformer cover plate.
9. Remove the two set screws (e), and take out the transformer.

### TO ATTACH

Proceed the above sequence in reverse.



## TO CHANGE THE MOTOR

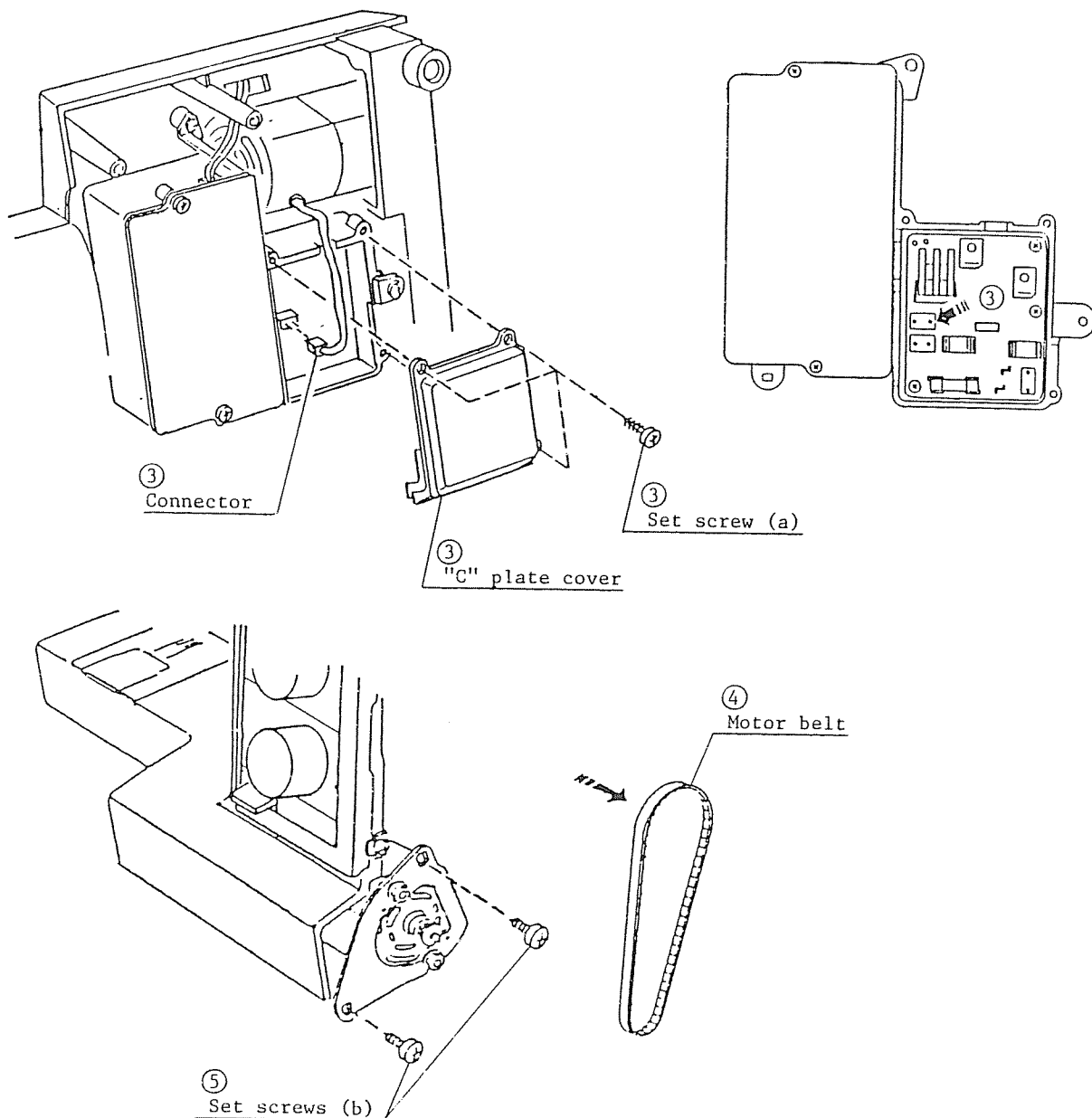
### TO REMOVE

1. Turn off the power switch. Turn the machine to the back.
2. Remove the base and belt cover. (Refer to the page 3.)
3. Remove the three set screws (a), and remove the "C" plate cover plate. Then pull out the connector for the motor.
4. Remove the motor belt.
5. Remove the two set screws (b), and pull out the motor.

### TO ATTACH

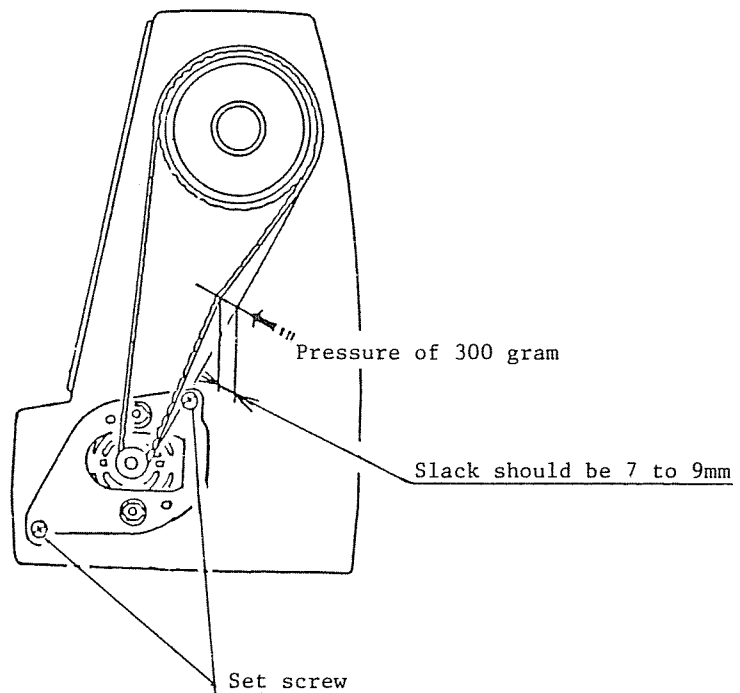
Proceed the above sequence in reverse.

\*\*\* When tightening the two motor set scrws (b), make sure the motor belt tension is correct. Refer to the page 11 for adjusting the motor belt tension.



## TO ADJUST THE MOTOR BELT TENSION

1. Turn off the power switch.  
Remove the belt cover. (Refer to the page 3.)
2. Check the motor belt tension.  
When the motor belt is pushed with pressure of 300 gram, the slack should be 7 to 9mm as shown below.
3. If not, correct the tension.  
To correct the tension, loosen the two set screws and adjust the motor belt tension.
4. Attach the belt cover. (Refer to the page 3.)



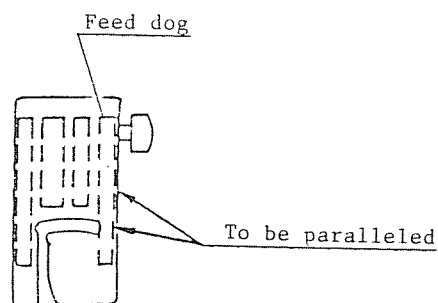
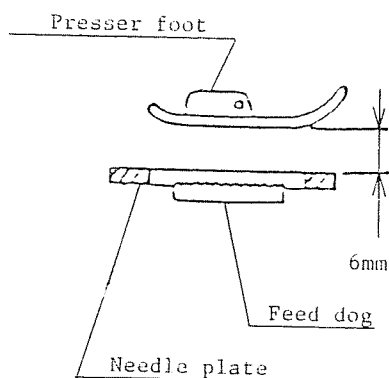
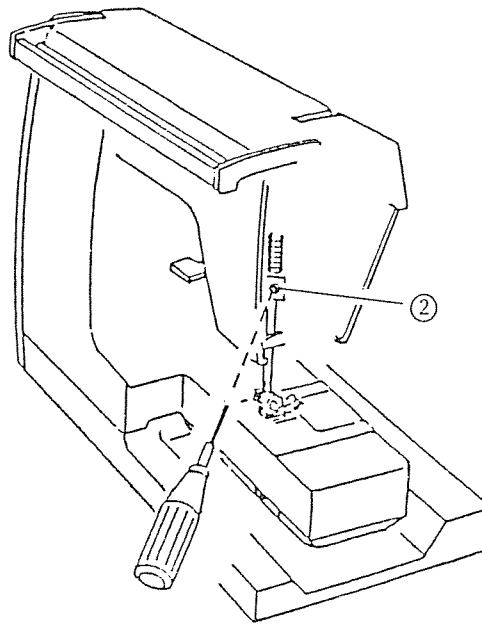
## TO ADJUST THE PRESSER BAR HEIGHT

### CORRECT SETTING

When the presser bar lifter is lowered, the presser foot should be paralleled with the feed dog. When the presser bar lifter is raised, the clearance between the presser foot and needle plate should be 6mm.

### TO ADJUST

1. Set the pressure dial at "3".
2. Attach the presser foot "A".
3. Set the drop feed lever at "DOWN".
4. Raise the needle bar to the highest position.
5. Raise the presser bar lifter and loosen the set screw (a).
6. Adjust the clearance between the presser foot and needle plate to 6mm.
7. Adjust the position of the presser foot so that the side of presser foot is paralleled with the feed dog.
8. Tighten the set screw (a) firmly.



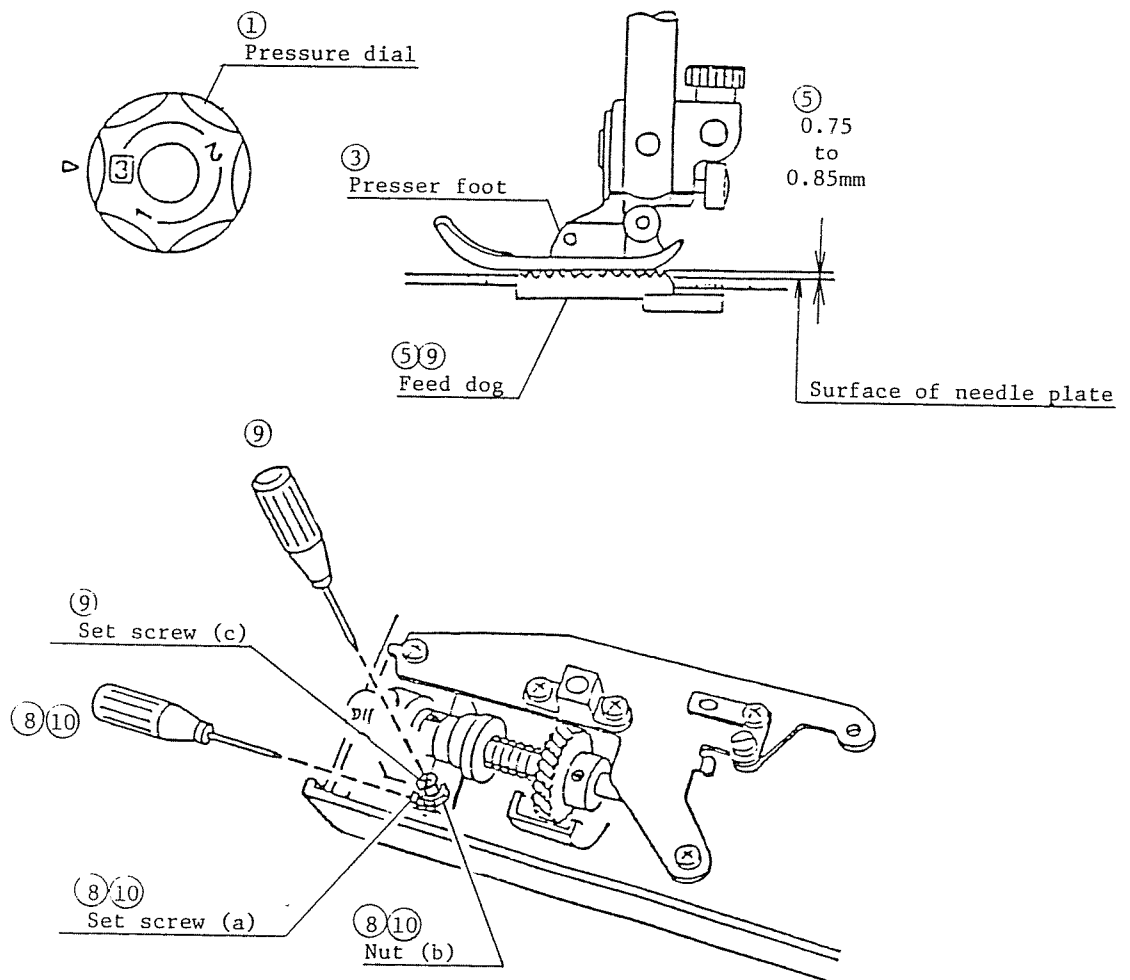
## TO ADJUST THE FEED DOG HEIGHT

### CORRECT SETTING

The highest position of feed dog should be 0.75 to 0.85mm above the needle plate when the presser foot is lowered with its maximum pressure. (The pressure dial should be set at "3".)

### TO ADJUST

1. Set the pressure dial at "3".
2. Set the stitch length dial at "4".
3. Attach the presser foot "A".
4. Lower the presser foot.
5. Turn the balance wheel toward you to raise the feed dog at its highest point.
6. Turn the machine to the back.
7. Remove the base and bed cover. (Refer to the pages 2 & 3.)
8. Loosen the set screw (a) and nut (b).
9. Turn the set screw (c) in order to obtain the correct height of feed dog. The height of feed dog should be 0.75 to 0.85mm above the needle plate.
10. Tighten the nut (b), then tighten the set screw (a).
11. Turn the balance wheel toward you and check the height of feed dog.
12. Attach the bed cover and base. (Refer to the pages 2 & 3.)

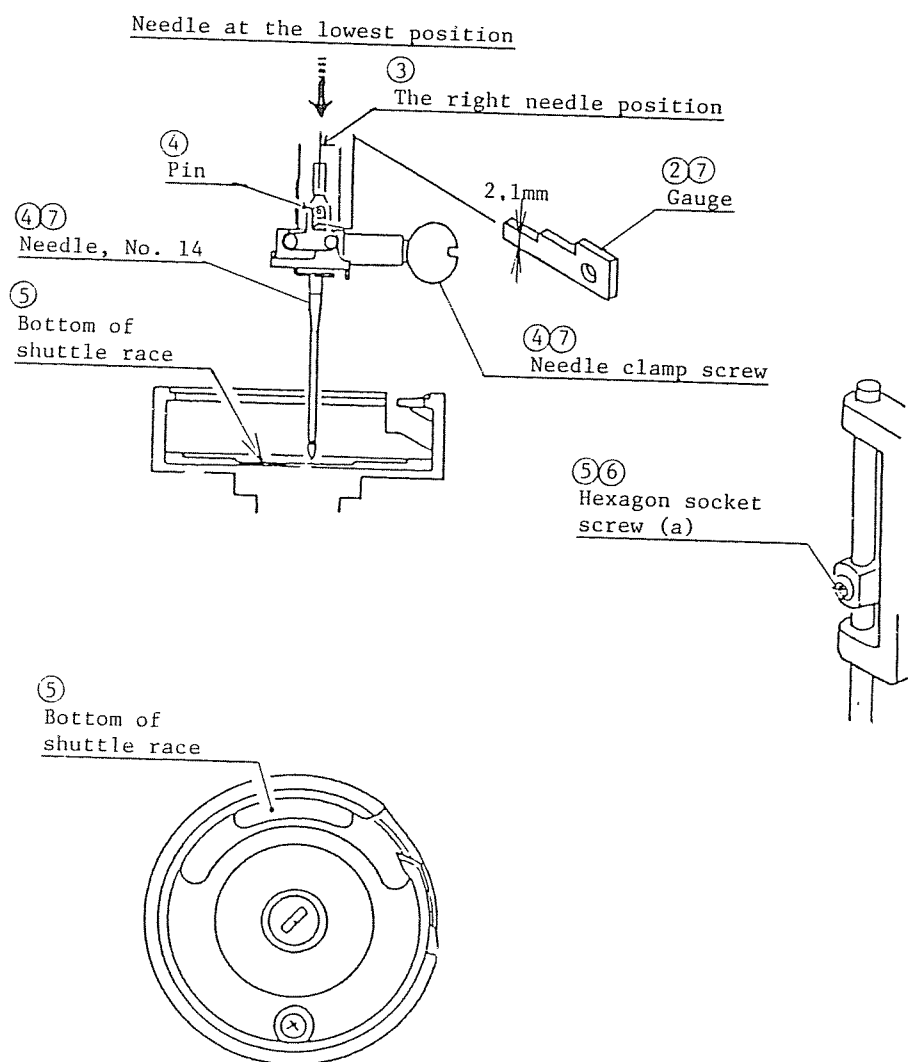




## TO ADJUST THE NEEDLE BAR HEIGHT

### TO ADJUST

1. Remove the presser foot, needle plate, bobbin and bobbin holder, and open the face plate.
2. Set the pattern selector dial at "11  $\nabla\nabla$  " and zigzag width dial at "6.5", then turn off the power switch.
3. Turn the balance wheel toward you with your hand and bring the needle to the right hand side.
4. Loosen the needle clamp screw, and insert the gauge (2.1mm) between the needle stopper pin and needle. Tighten the needle clamp screw.
5. Turn the balance wheel toward you until the needle bar comes to the lowest position. Loosen the hexagon socket screw (a), and lower the needle bar until the point of needle just touches the bottom of shuttle race. Make sure not to turn the needle bar.
6. Tighten the hexagon socket screw (a).
7. Loosen the needle clamp screw, and remove the gauge. Push up the needle as far as it will go, and tighten the needle clamp screw.
8. Insert the bobbin holder and bobbin, then attach the needle plate and presser foot. Close the face plate.

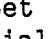


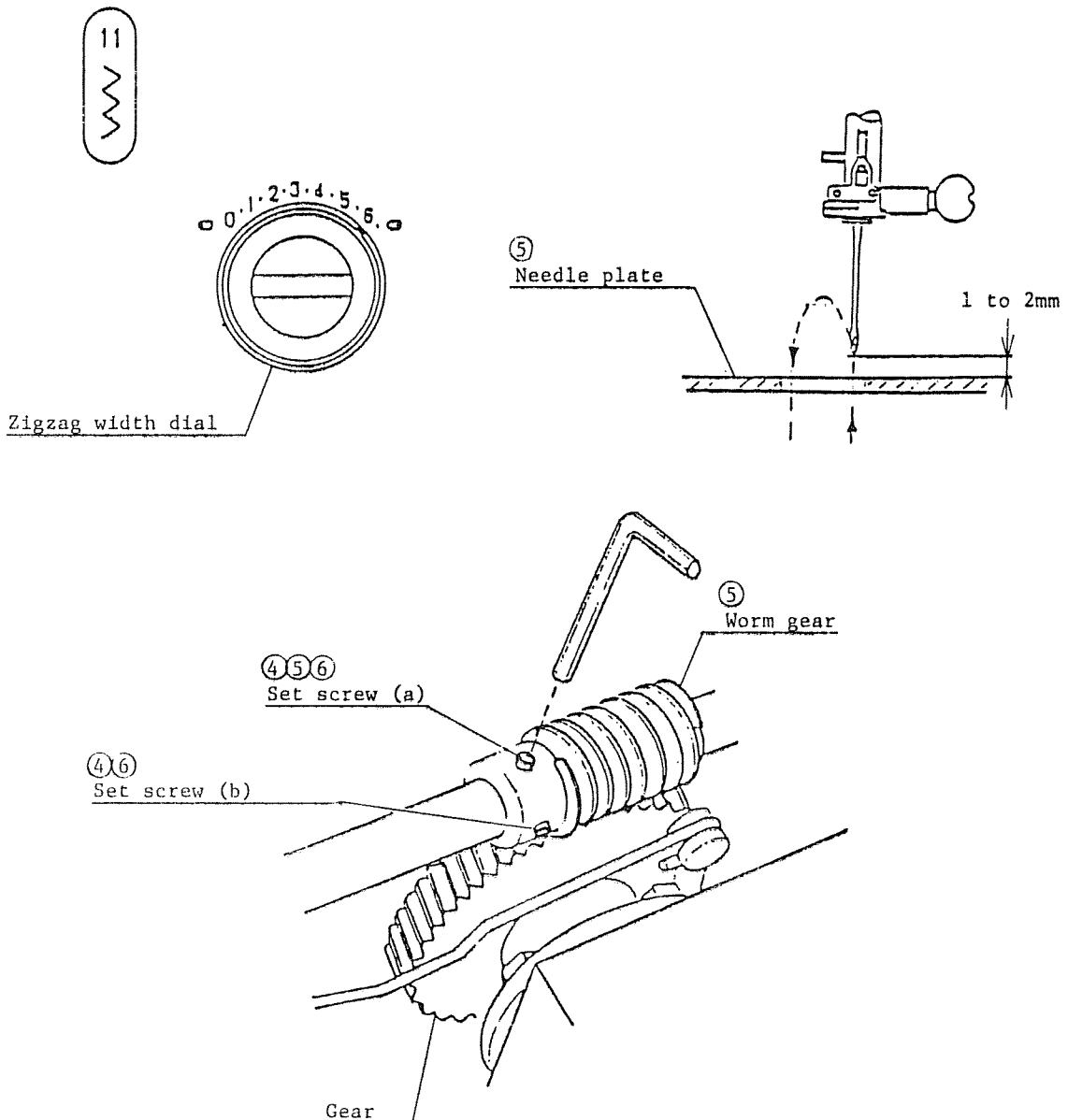
## TO ADJUST THE TIMING OF LATERAL NEEDLE SWING

### CORRECT SETTING

When the needle bar is raised at the right needle position for zigzag stitching, the starting point of lateral swing should be in range of 2 to 3mm above the surface of needle plate.

### TO ADJUST

1. Set the pattern selector dial at "11  " and zigzag width dial at "6.5". Then turn off the power switch.
2. Position the needle in the right upward movement of its travel by turning the balance wheel toward you.
3. Remove the top cover. (Refer to the page 1.)
4. Loosen the two set screws (a & b).
5. While holding the set screw (a) with screwdriver in order to prevent upper shaft worm gear from turning. Turn the balance wheel toward you to make the adjustment. The starting point of needle's lateral swing should be 1 to 2mm above the needle plate.
6. Tighten the set screws (a & b) firmly after the adjustment.
7. Attach the top cover. (Refer to the page 1.)



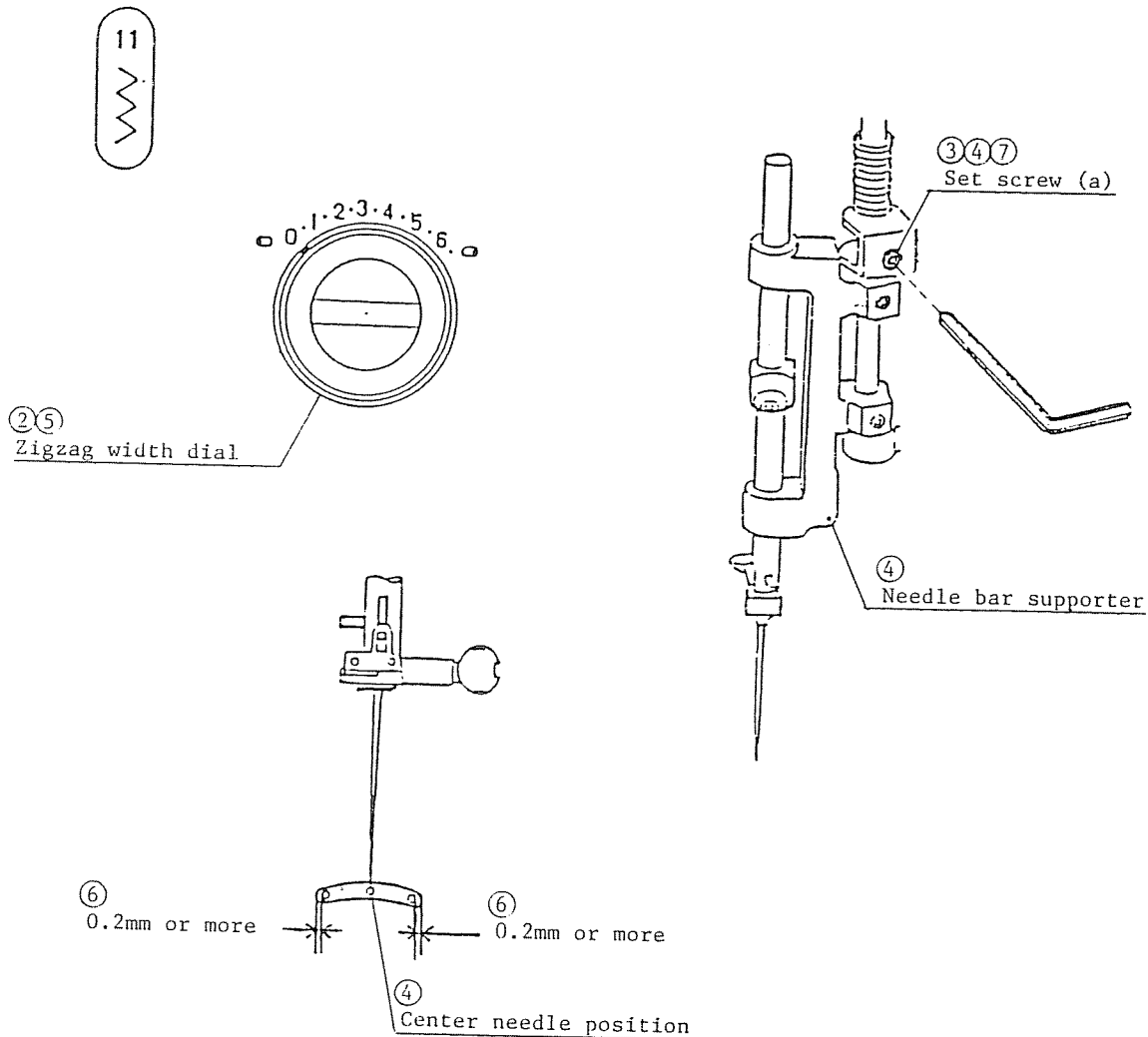
# TO ADJUST THE NEEDLE DROP POSITION IN NEEDLE PLATE HOLE

## CORRECT SETTING

When the pattern selector dial is set at "11  $\nabla\nabla$ " and zigzag width dial at "0", the needle should be positioned at the center of needle hole on the needle plate. When turning balance wheel toward you with zigzag width dial at "6.5" (the maximum zigzag width) in zigzag stitching (No. 11  $\nabla\nabla$ ). The clearance between needle and both edges of needle hole should be more than 0.2mm. Before making this adjustment, check the zero position of zigzag stitch and needle position misalignment. (Refer to the pages 17 & 18.)

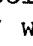
## TO ADJUST

1. Change the needle to No. 14.
2. Set the pattern selector dial at "11  $\nabla\nabla$ " and zigzag width dial at "0". Then turn off the power switch, and open the face plate.
3. Loosen the set screw (a).
4. Move the needle bar supporter in order to position the needle at the center of needle hole on needle plate. Then tighten the set screw (a) slightly.
5. Turn the zigzag width dial to "6.5" (the maximum zigzag width).
6. Turn the balance wheel toward you for making sure the clearance between the needle and both edges of needle hole should be more than 0.2mm.
7. Tighten the set screw (a) firmly after the adjustment.

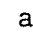


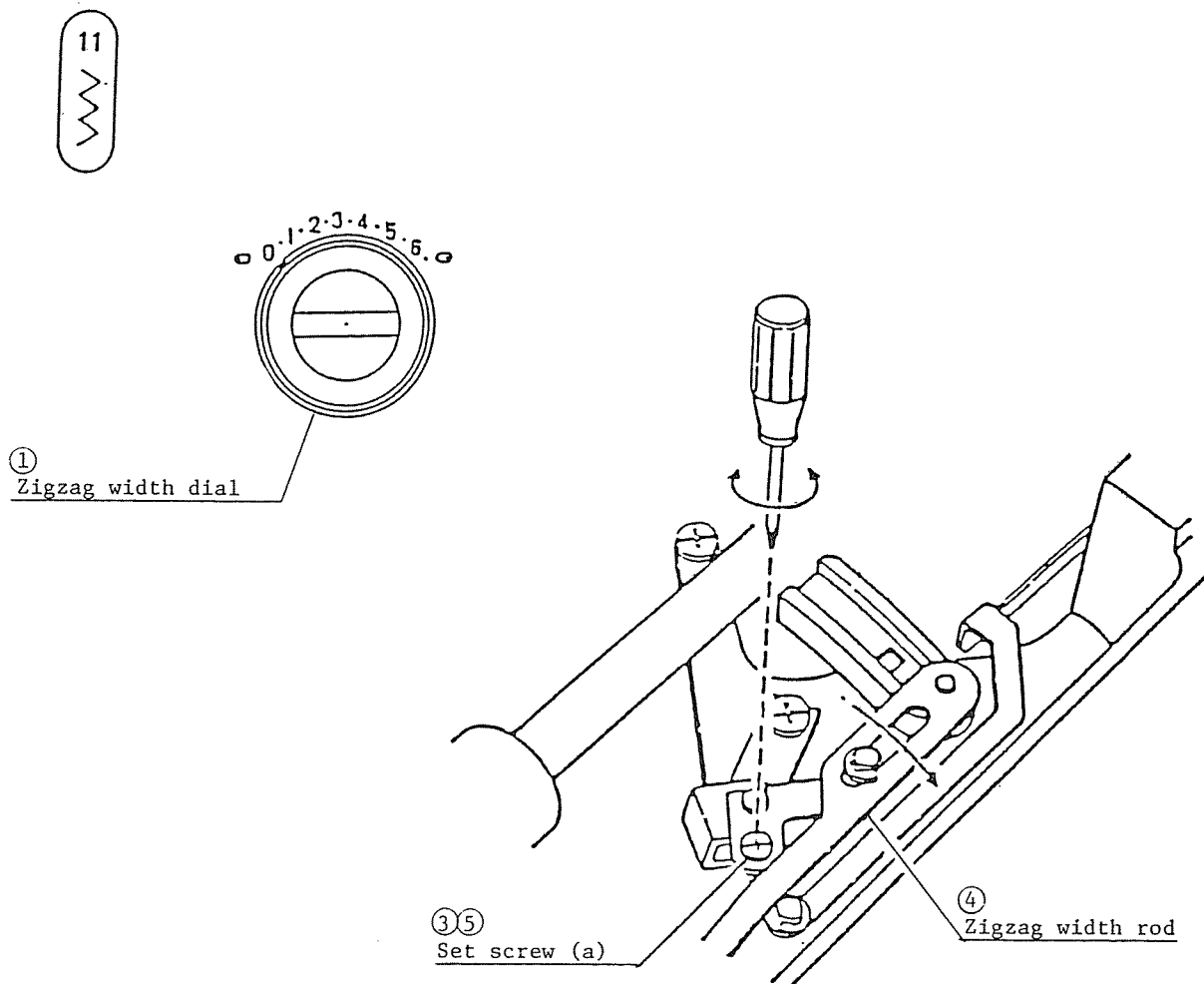
## TO ADJUST THE ZERO POSITION OF ZIGZAG STITCH

### CORRECT SETTING

The needle bar should not swing when the balance wheel is turned toward you after the machine is set for pattern no. 11  with zigzag width dial at "0".

### TO ADJUST

1. Set the pattern selector dial at "11  " and zigzag width dial at "0", then turn off the power switch.
2. Remove the top cover. (Refer to the page 1.)
3. Loosen the set screw (a).
4. Move the zigzag width rod to the point where the needle does not swing when the balance wheel is turned toward you.
5. Tighten the set screw (a) firmly.
6. Attach the top cover. (Refer to the page 1.)




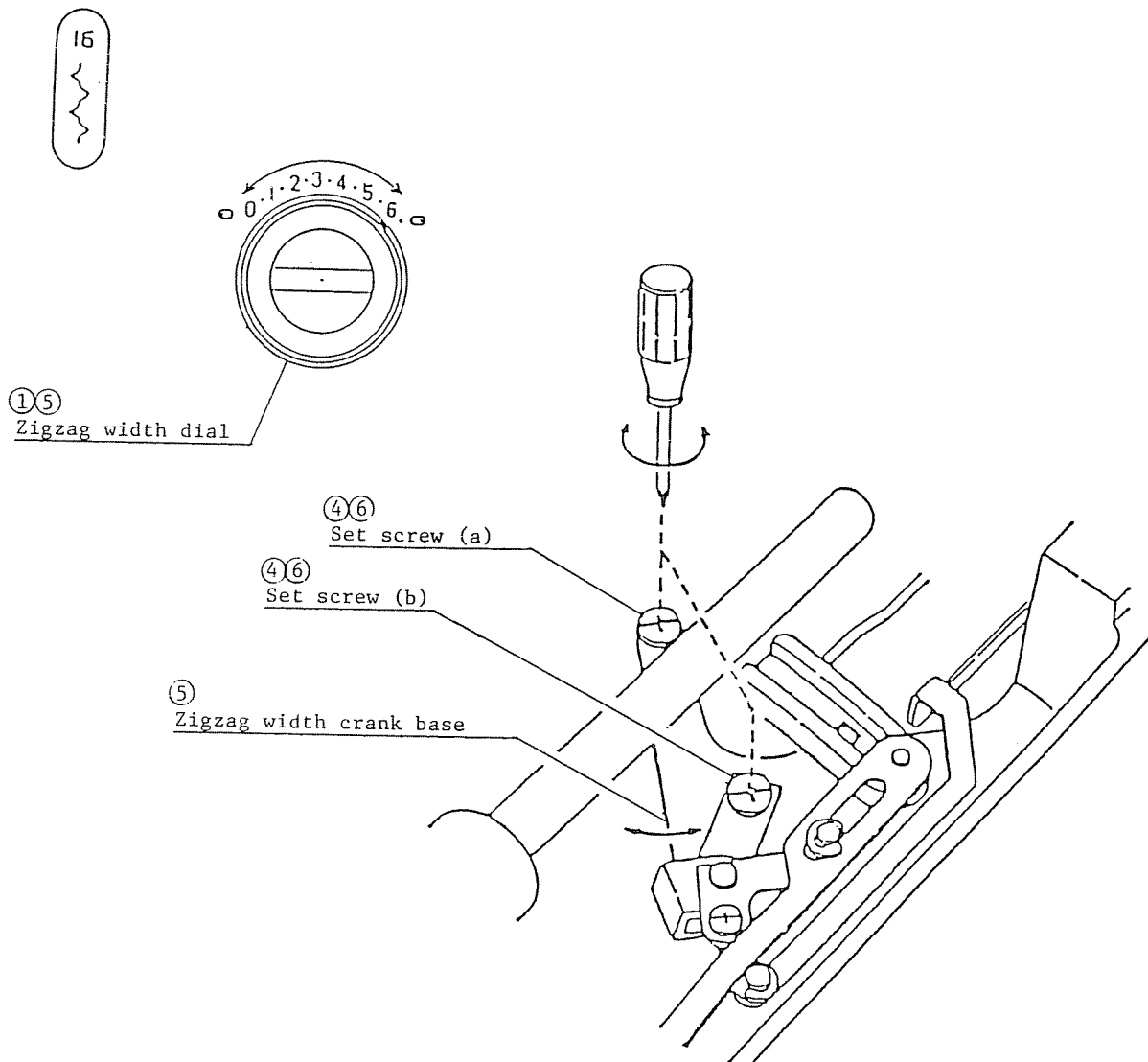
## TO ADJUST THE NEEDLE POSITION MISALIGNMENT

### CORRECT SETTING

The needle bar should not swing when the zigzag width dial is moved between "0" and "6.5" after the machine is set for pattern No. 6 with the maximum zigzag width and the needle bar is brought to the center by turning the balance wheel toward you.

### TO ADJUST

1. Set the pattern selector dial at "16  " and zigzag width dial at "6.5" (the maximum zigzag width). Then turn off the power switch.
2. Turn the balance wheel to bring the needle bar to the center position.
3. Remove the top cover. (Refer to the page 1.)
4. Loosen the set screw (a) and tighten it slightly, then loosen the set screw (b).
5. Move the zigzag width crank base as shown until the needle bar does not swing when zigzag width dial is turned between "0" and "6.5".
6. Tighten the set screws (a & b) firmly after the adjustment.
7. Attach the top cover. (Refer to the page 1.)



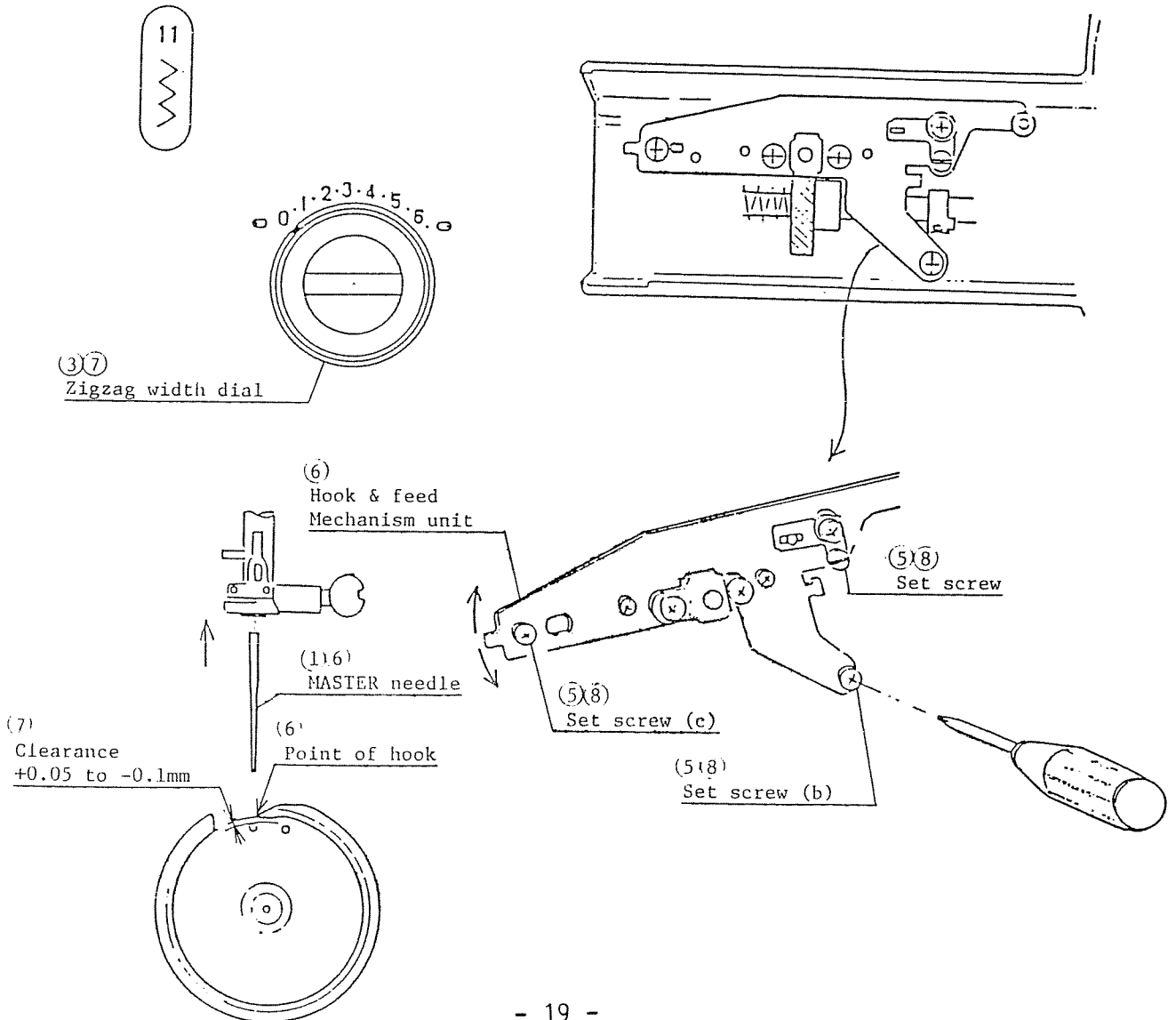
TO ADJUST THE CLEARANCE BETWEEN NEEDLE AND ROTARY HOOK

CORRECT SETTING

The clearance between the needle and point of rotary hook should be  $-0.1$  to  $+0.05\text{mm}$  at the each needle position.

TO ADJUST

1. Change the needle to MASTER NEEDLE.
2. Set the pattern selector dial at "11  $\sim\sim\sim$  ", and turn off the power switch.
3. Set the zigzag width dial at "0". Remove the needle plate and bobbin holder.
4. Turn the machine to the back, and remove the base and bed cover. (Refer to the pages 2 & 3.)
5. Loosen the set screw (a) and tighten it slightly. Then loosen the set screws (b & c).
6. Turn the balance wheel toward you to bring the point of rotary hook to the back of MASTER NEEDLE. Slide the left end of hook and feed mechanism unit (d) up or down for making the adjustment.
7. Turn the zigzag width dial to "6.5" (the maximum zigzag width). Check the clearance between needle and hook at the left and right needle positions.
8. Tighten the set screws (b & c) and then (a).
9. Attach the base and bed cover. (Refer to the pages 2 & 3.) Attach the bobbin holder and needle plate.



## TO ADJUST THE HOOK TIMING

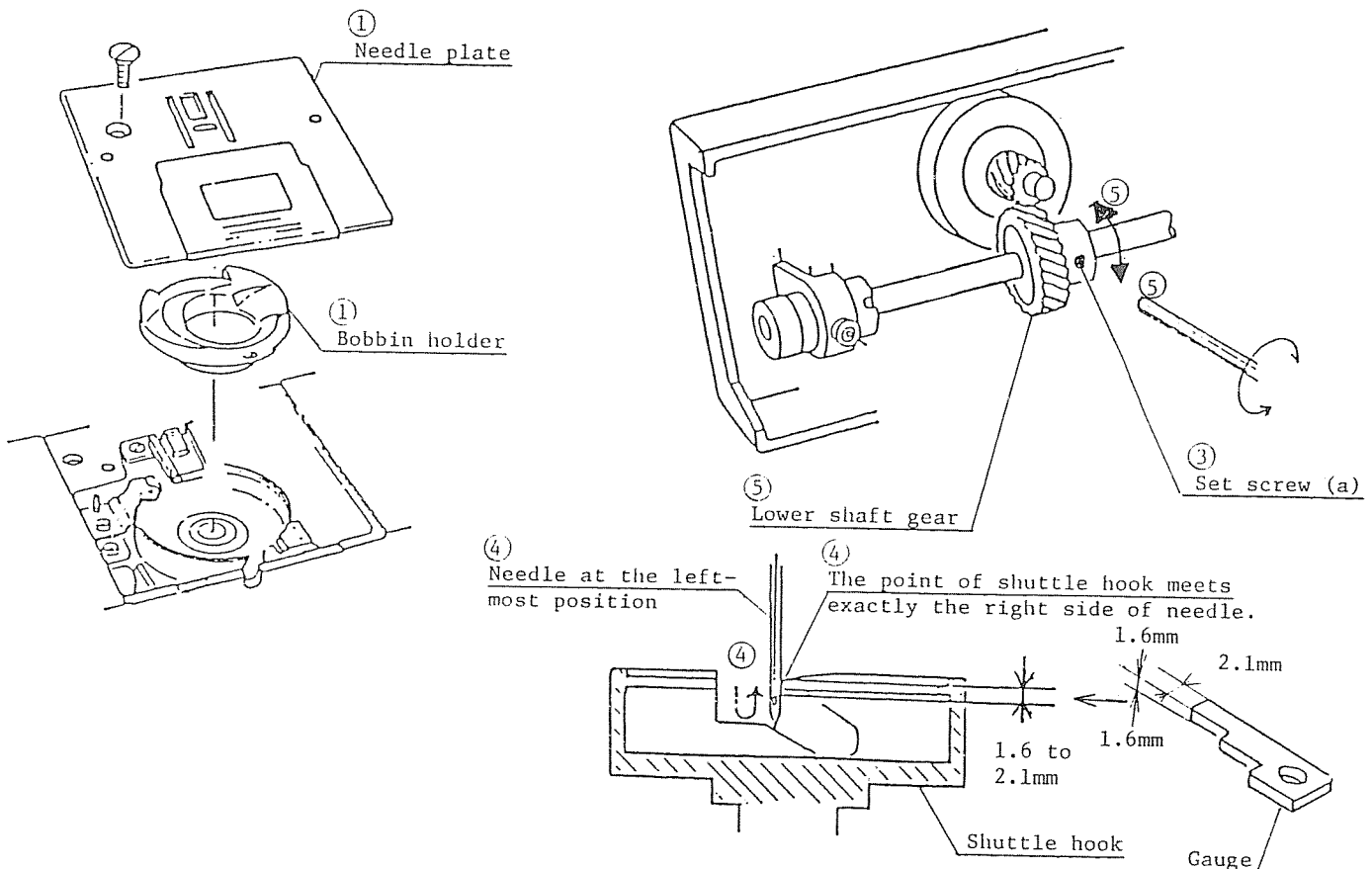
### CORRECT SETTING

When the point of shuttle hook meets exactly the right side of needle at the left needle position in upward stroke of the travel of the needle bar, the distance between the top of needle eye and upper edge of the point of shuttle hook should be 1.6 to 2.1mm.

\*\*\* Before proceeding this adjustment, check the clearance between the needle and shuttle hook, and also check the needle bar height.  
(Refer to the pages 14 & 19.)

### TO ADJUST

1. Turn the power switch off, and remove the presser foot, needle plate, bobbin, bobbin holder and bed cover.
2. Set the zigzag width dial at "6.5" (the maximum zigzag width).
3. Loosen the two hexagon socket screws.
4. Turn the balance wheel toward you until the point of shuttle hook meets exactly the right side of needle in the upward travel of needle bar at the left needle position.
5. Insert the hexagon socket screwdriver into one of the two hexagon socket screws (a), and turn the lower shaft gear while holding the balance wheel tight with your hand.
6. Tighten the two hexagon socket screws (a) after the adjustment is made.
7. Attach the bed cover, bobbin holder, bobbin, needle plate and presser foot.



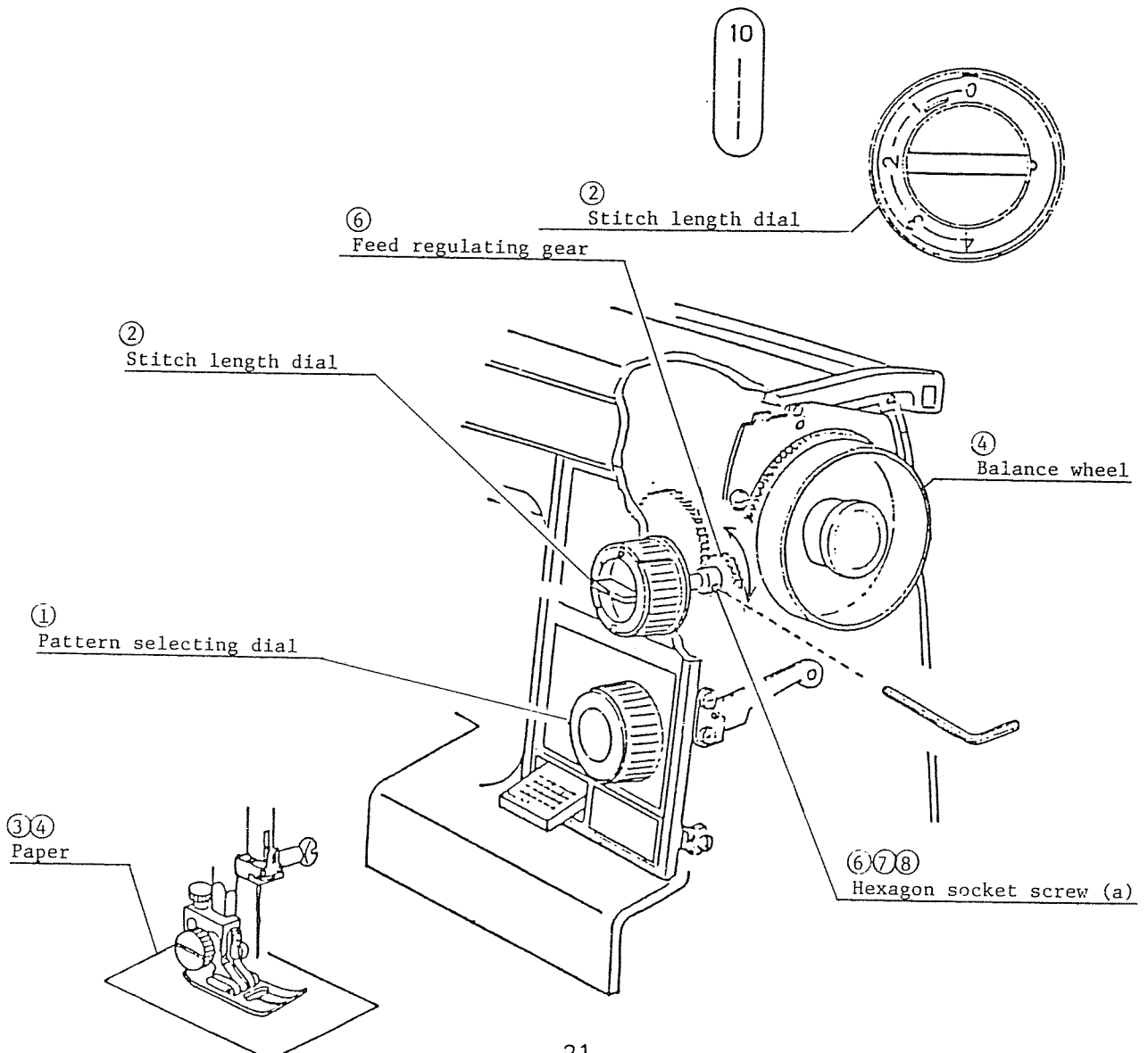
## TO ADJUST THE ZERO FEED

### CORRECT SETTING

When the stitch length dial is set at "0" in straight stitching, the feed dog should only be moved up and down with no feeding.

### TO ADJUST

1. Set the pattern selector dial at "10 ---- ", and turn off the power switch.
2. Set the stitch length dial at "0".
3. Place a sheet of paper between the needle plate and presser foot.
4. Turn the balance wheel toward you to check if the paper is fed.
5. Remove the belt cover. (Refer to the page 3.)
6. Loosen the set screw (a).  
While holding the stitch length dial in position by hand, turn the feed regulating gear (b) to adjust:
  - i) If the paper moves forward, turn the gear (b) in the direction of A.
  - ii) If the paper moves backward, turn the gear (b) in the direction of "B".
7. Tighten the set screw (a) slightly, and recheck the feeding.
8. Tighten the set screw (a) firmly, then attach the belt cover. (Refer to the page 3.)





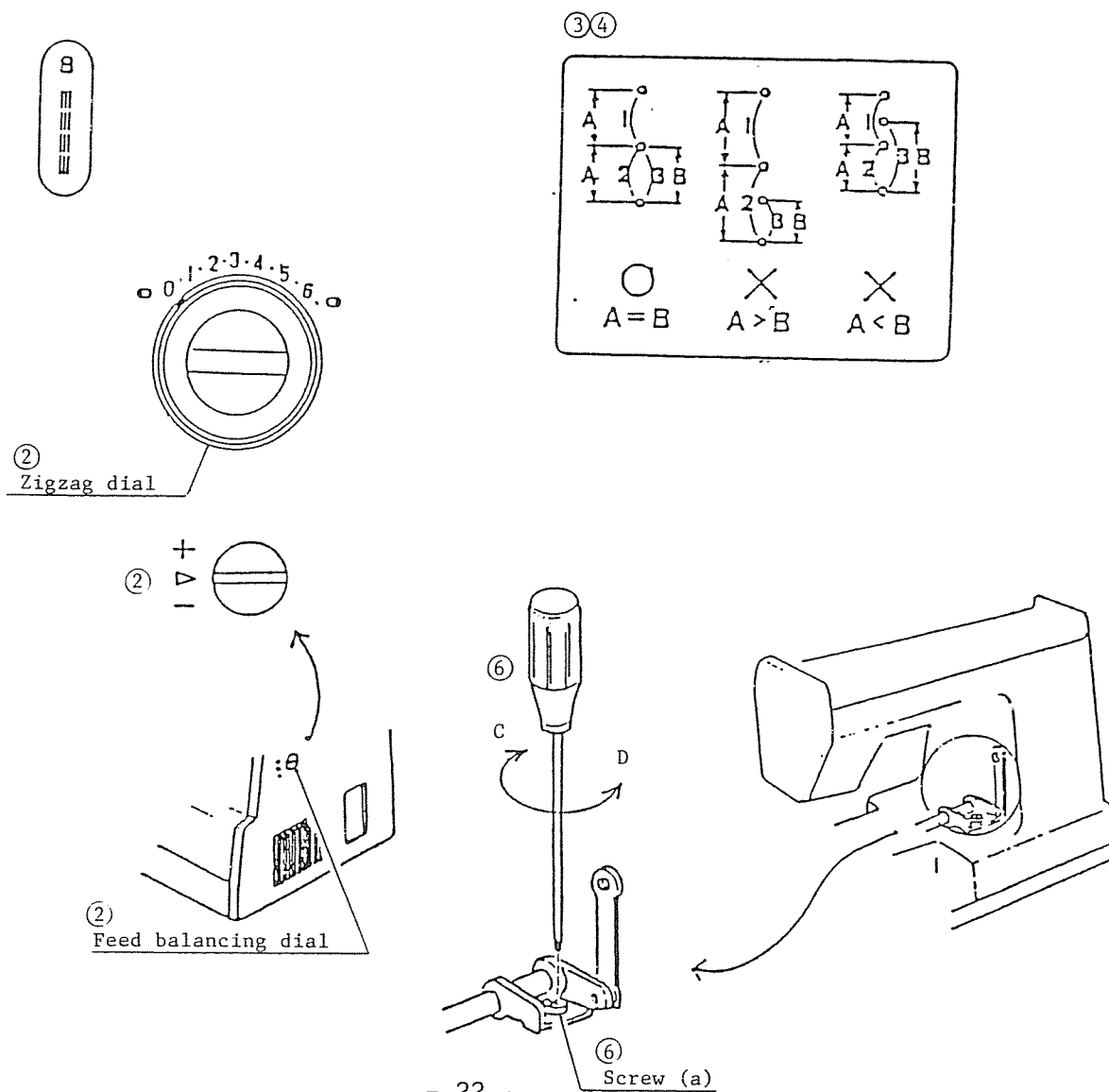
## TO ADJUST THE STRETCH STITCH FEED BALANCE

### CORRECT SETTING

When the machine is set for triple stretch stitch (8 =====), the needle should enter the same perforation during forward and backward feeding.

### TO ADJUST

1. Set the pattern selector dial at "8 =====", and turn off the power.
2. Set the zigzag width dial at "0" and the feed balance dial at "0".
3. Place a piece of paper between the needle plate and presser foot.
4. Turn the balance wheel toward you to check needle perforation.
5. Remove the top cover. (Refer to the page 1.)
6. Turn the screw (a) in order to balance the feed.
  - i) If forward feeding (A) is longer than backward feeding (B), turn the screw (a) clockwise.
  - ii) If forward feeding (A) is shorter than backward feeding (B), turn the screw (a) counter-clockwise.
7. Attach the top cover. (Refer to the page 1.)



## TO ADJUST THE BUTTONHOLE FEED BALANCE

### CORRECT SETTING

When sewing buttonhole, the stitches on each side of buttonhole should be the same stitch density. The variance of 9 to 12 stitches in the right side row against 10 stitches in the left side row is considered acceptable feed balance for buttonhole sewing.

### TO ADJUST

1. Set the stitch length dial within the green zone and zigzag width dial at "6.5" (the maximum zigzag width).
2. Attach the buttonhole foot.
3. Sew a buttonhole by setting the pattern selector dial at "1 4 3", and check the stitch density on each side of buttonhole.
4. Turn off the power switch.
5. Turn the machine to the back and remove the base and bed cover. (Refer to the pages 2 & 3).
6. Loosen the set screw (a).
7. Turn the ring (b) in order to balance the feed.
  - i) If the right side row is coarser than the left side row, turn the ring (b) counter-clockwise (in the direction of "C").
  - ii) If the left side row is coarser than the right side row, turn the ring (b) clockwise (in the direction of "D").
8. Tighten the set screw (a) slightly, and check the balance.
9. Tighten the set screw (a) firmly after the adjustment.
10. Attach the bed cover and base. (Refer to the pages 2 & 3).

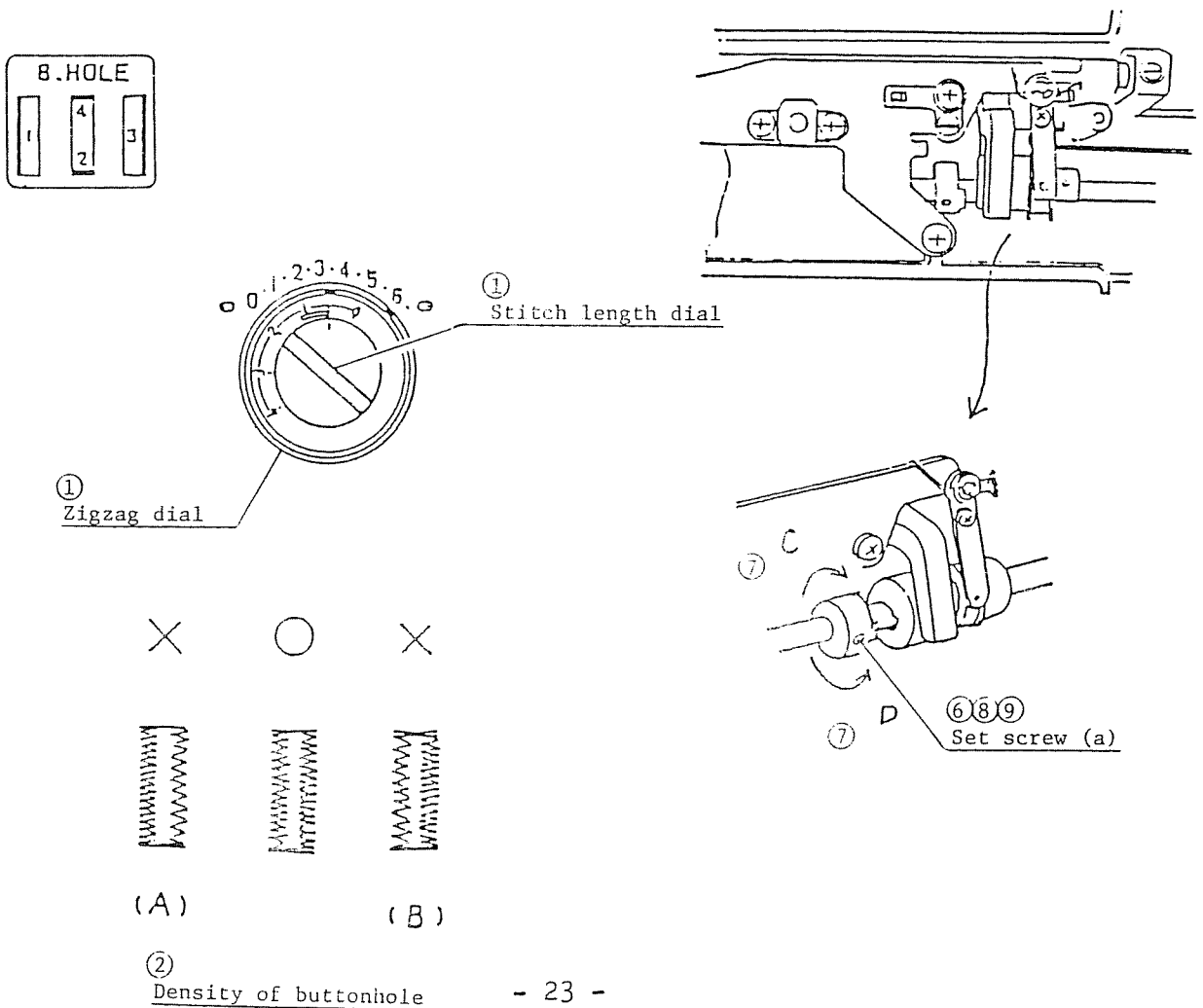
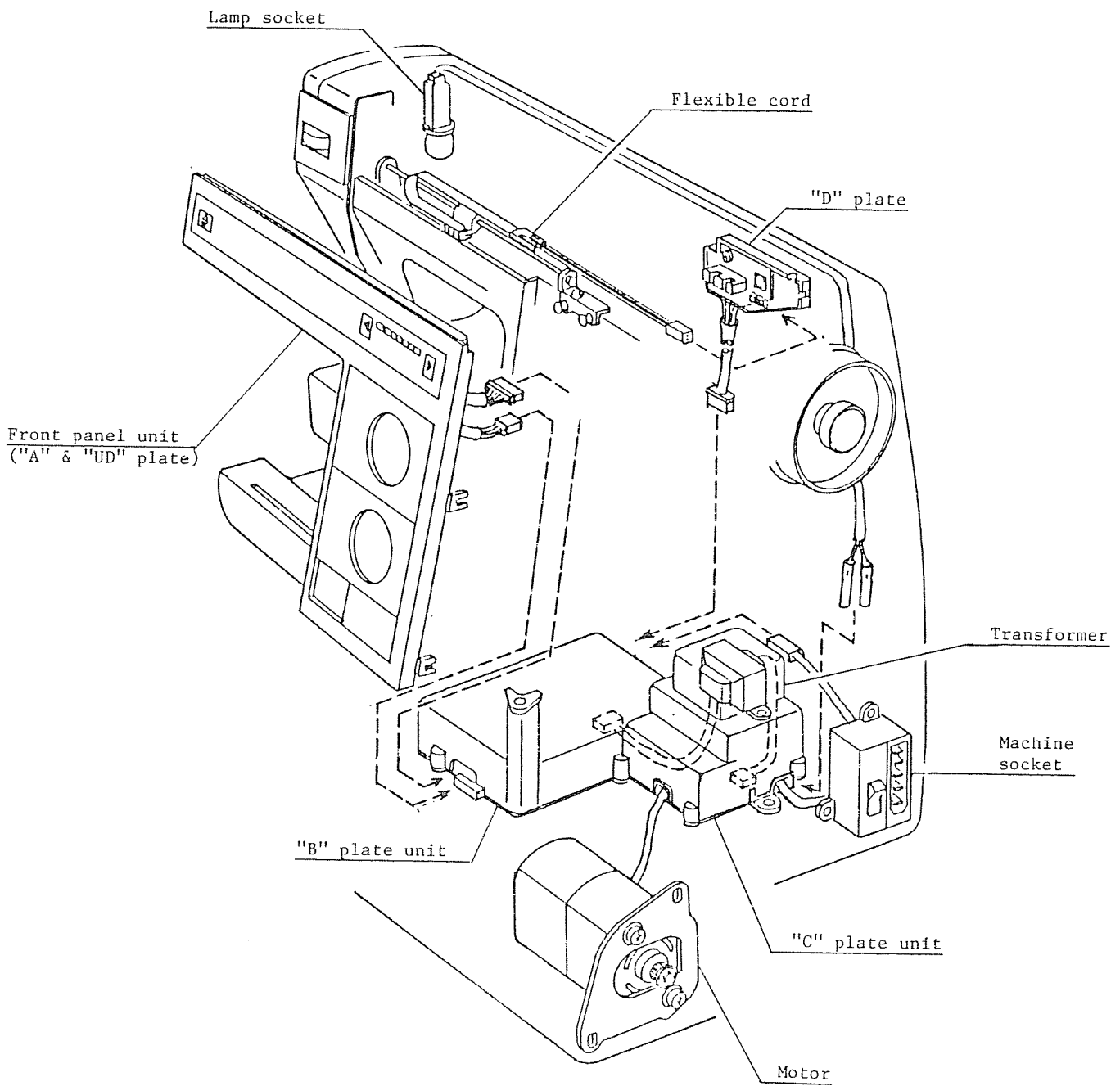
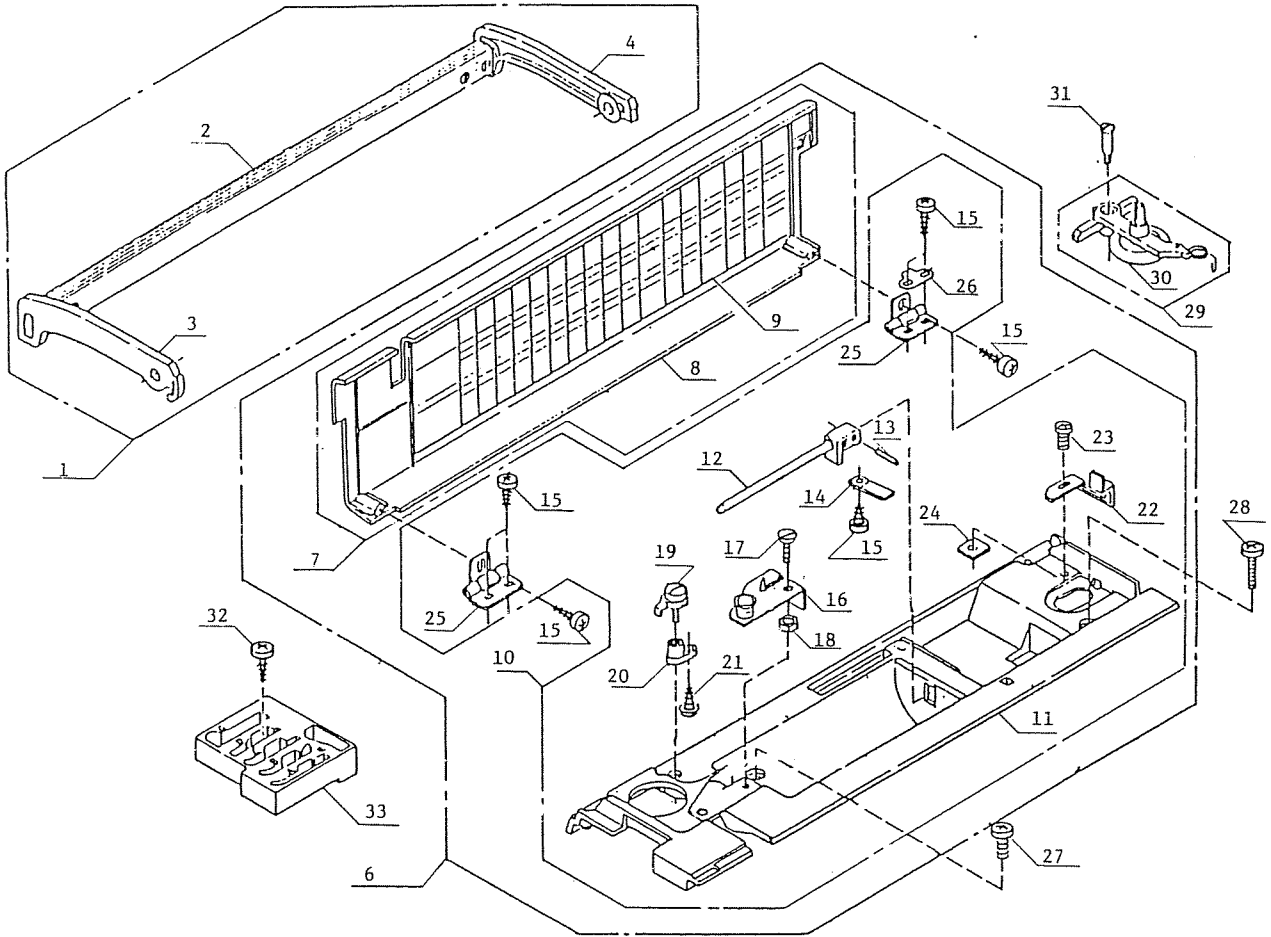
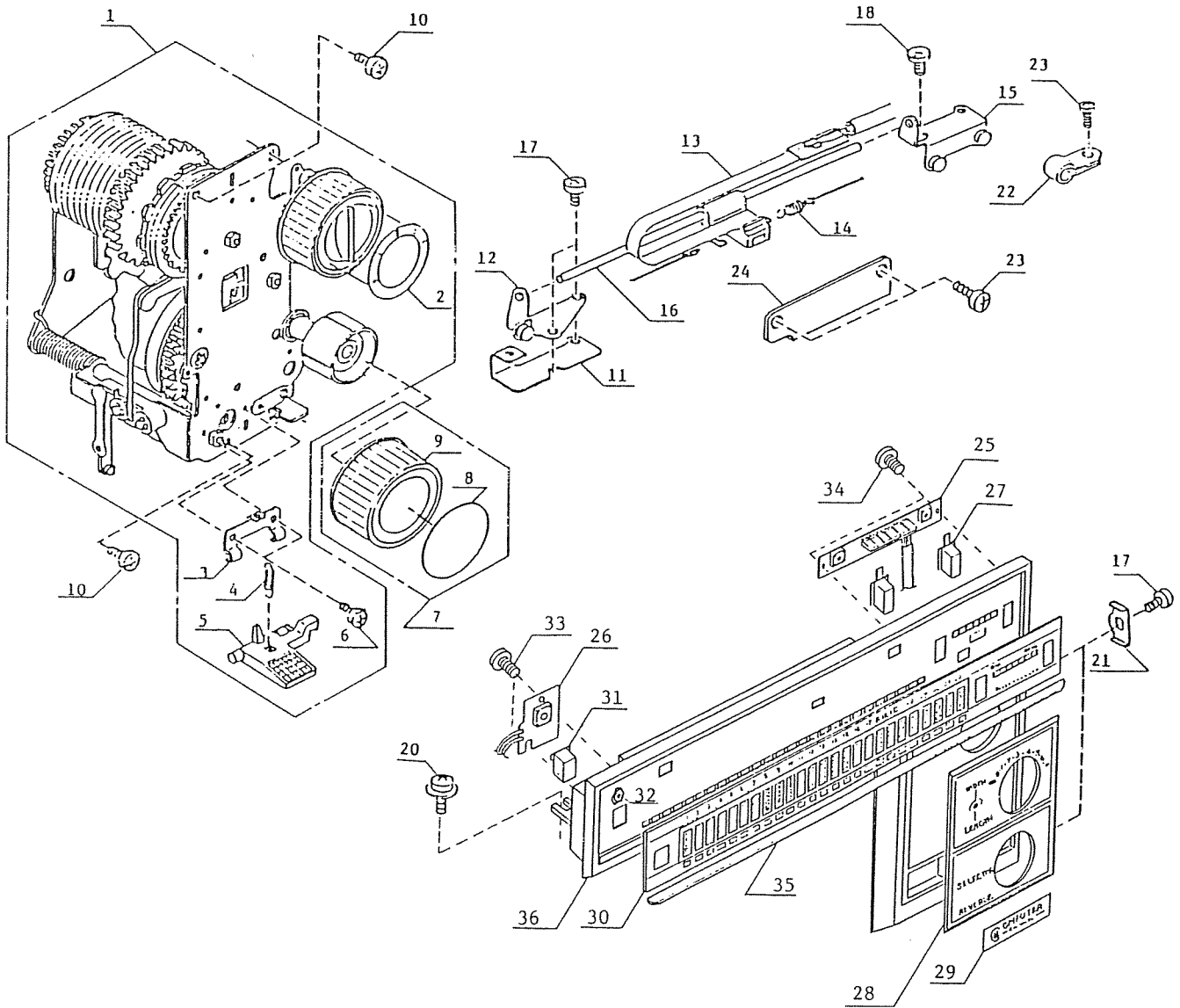


DIAGRAM OF THE CORD CONNECTORS





REF. NO.	PART NO.	DESCRIPTION	REF. NO.	PART NO.	DESCRIPTION
1	686620109	Handle unit	31	686063005	Hinge screw
2	686507109	Handle bar unit	32	000120214	Set screw
3	686057109	Stay (L)	33	686016106	Foot compartment
4	686058100	Stay (R)			
5	000107318	Set screw			
6	687605101	Top cover complete unit			
7	687606102	Top cover unit			
8	687019009	Top cover			
9	688024000	Reference chart			
10	687607000	Top cover body unit			
11	687021004	Top cover body			
12	822016001	Spool pin			
13	822017002	Pin			
14	822018003	Spring			
15	000107318	Set screw			
16	686501000	Thread guide unit			
17	693093006	Set screw			
18	000062701	Nut			
19	822502009	Bobbin winder thread guide unit			
20	822021009	Thread guide base			
21	000149002	Set scrw			
22	687022005	Bobbin winder stopper			
23	000066727	Set screw			
24	630005006	Leaf nut			
25	820502106	Hinge unit			
26	822321002	Spring			
27	000103417	Set screw			
28	000080901	Set screw			
29	686503002	Bobbin winder unit			
30	365076007	Bobbin winder ring			

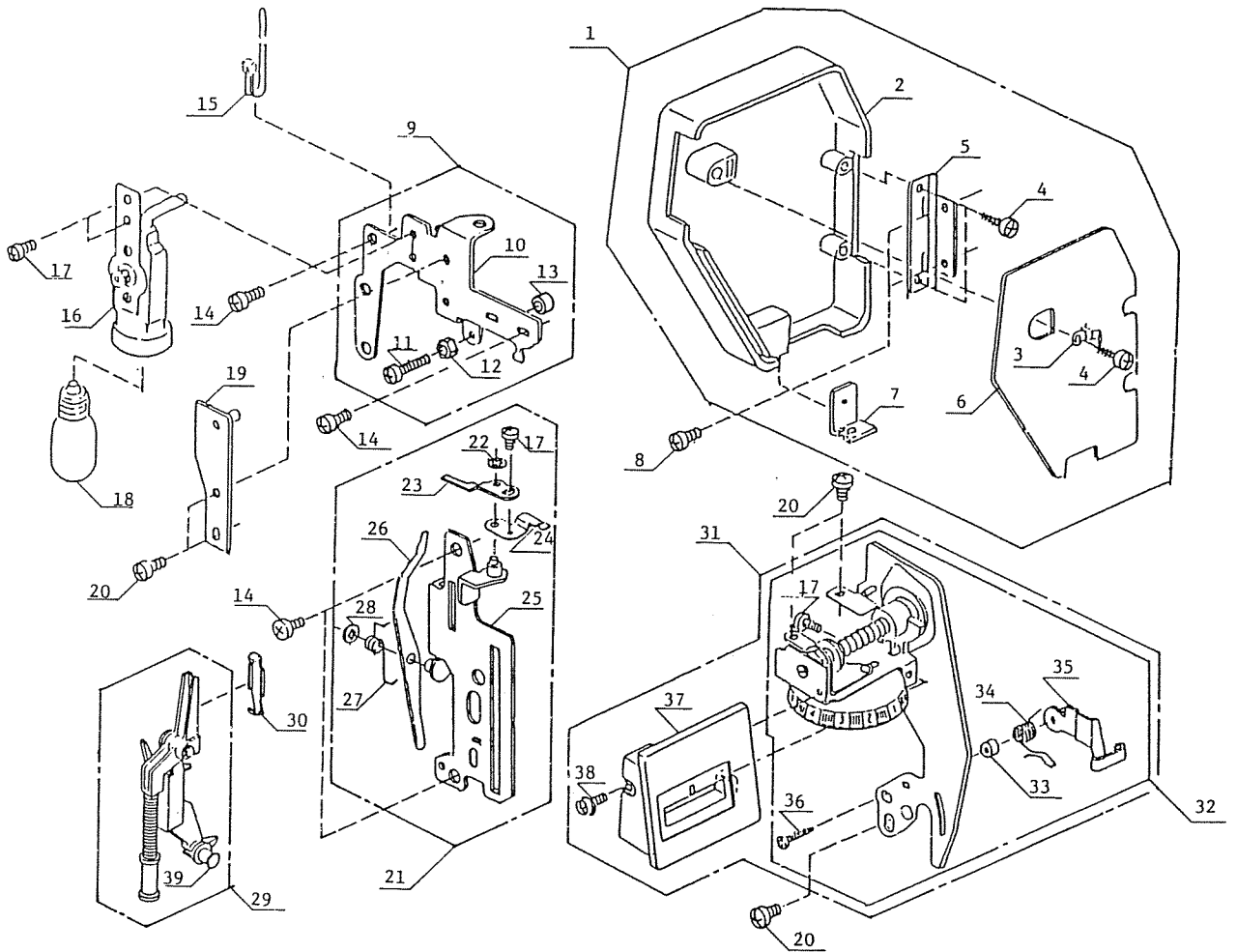


REF. NO.    PART NO.    DESCRIPTION

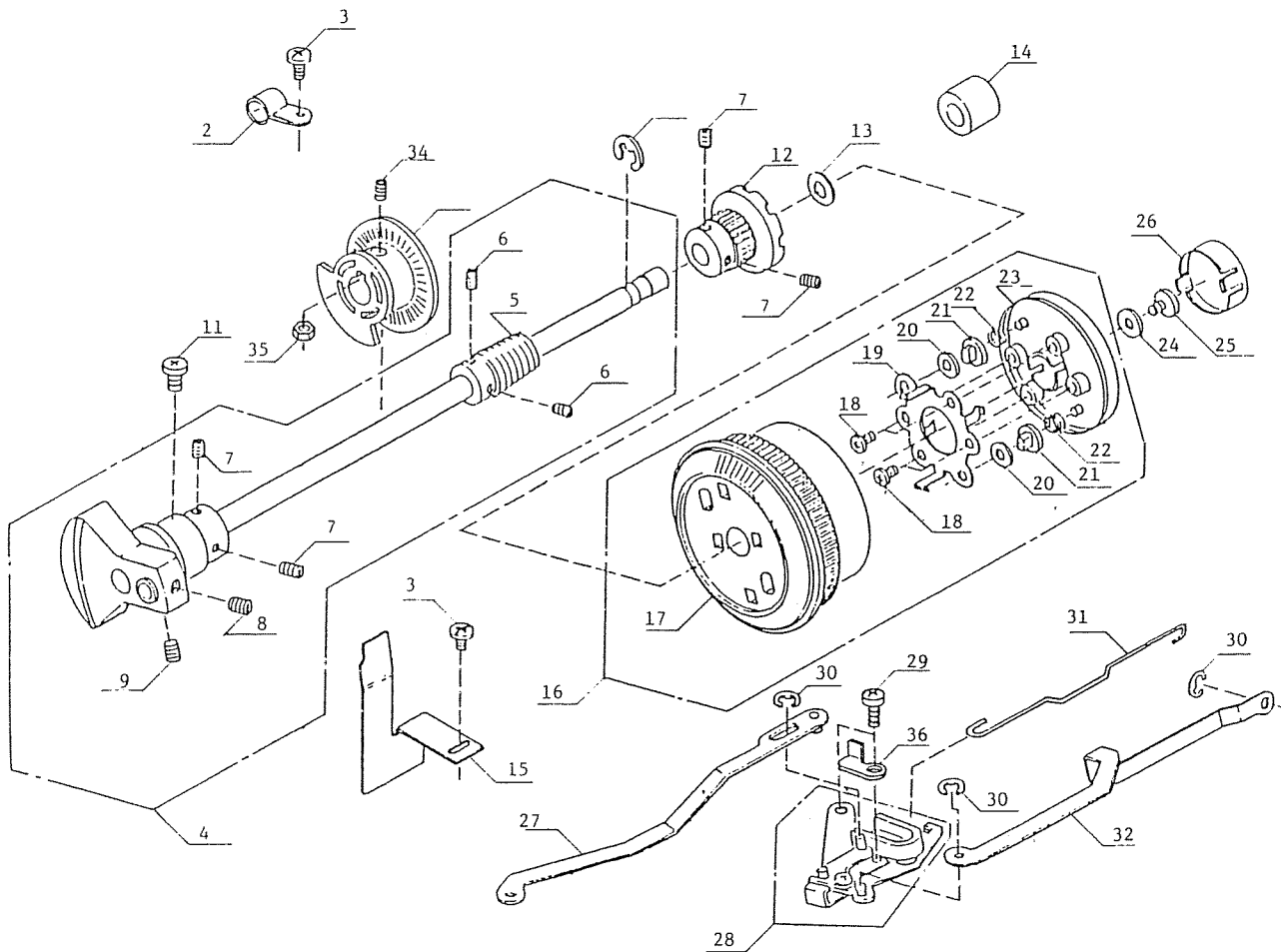
1	687611100	Cam block unit
2	686043009	Stitch length ind. plate
3	687043002	Reverse button supporter •
4	687044003	Spring
5	687042104	Reverse button
6	000101105	Set screw
7	687614103	Pattern selecting dial unit
8	687048100	Ornamental plate
9	687047109	Pattern selecting dial
10	810220003	Set screw
11	687054006	Front pnael set plate
12	687055007	Pattern ind. guide supporter (L)
13	688508003	Flexible cord unit
14	687616002	String unit
15	687056008	Pattern ind. guide supporter (R)
16	687057009	Flexible cord guide
17	000081005	Set screw
18	000069605	Set screw
19	-----	-----
20	000115607	Set screw

REF. NO.    PART NO.    DESCRIPTION

21	650160002	Washer
22	000126106	Cord guide
23	000101404	Set screw
24	688018001	Cord guide
25	688503008	A plate unit
26	688507002	UD plate unit
27	688009009	Speed control button
28	688027003	Stitch length ind. plate
29	688028004	Ornamental plate
30	688026002	Pattern ind. plate
31	688008008	UP/DOWN needle position button
32	000061803	Nut
33	000103808	Set screw
34	000107318	Set screw
35	687050002	Ornamental plate
36	687049008	Front panel



REF. NO.	PART NO.	DESCRIPTION	REF. NO.	PART NO.	DESCRIPTION
1	687608001	Face plate unit	29	822510000	Needle threader unit
2	687023006	Face plate	30	625084003	Spring
3	650025004	Spring	31	687609208	Tension comp. (JANOME brand)
4	000076317	Set screw	31	687609301	Tension comp. (NEW HOME brand)
5	366501102	Hinge unit	32	687506204	Tension unit
6	687024007	Sticker	33	625057007	Spring guide
7	822532008	Thread cutter	34	650044009	Check spring
8	000081119	Set screw	35	650045000	Thread guide
9	688601007	Lamp set plate unit	36	000069708	Set screw
10	824008006	Lamp set plate	37	688025001	Tension ind. plate (JANOME)
11	000105408	Set screw	37	688025104	Tension ind. plate (NEW HOME)
12	000160102	Nut	38	000120203	Set screw
13	685042005	Stopper			
14	000081005	Set screw			
15	000053008	Binder			
16	686510008	Lamp socket (Screw-in type, 120V)			
	686508100	Lamp socket (Bayonet type, 240V)			
17	000103808	Set screw			
18	000008606	Light bulb (Screw-in type, 120V)			
	000009009	Light bulb (Bayonet type, 240V)			
19	686059008	Handle support plate			
20	000101404	Set screw			
21	824608002	Supporter plate unit			
22	000014306	CS ring			
23	824012003	Tension releasing lever (2)			
24	687032008	Tension releasing lever (1)			
25	824010001	Supporter plate			
26	686020000	Tension releasing lever			
27	824011002	Spring			
28	000013903	CS ring			

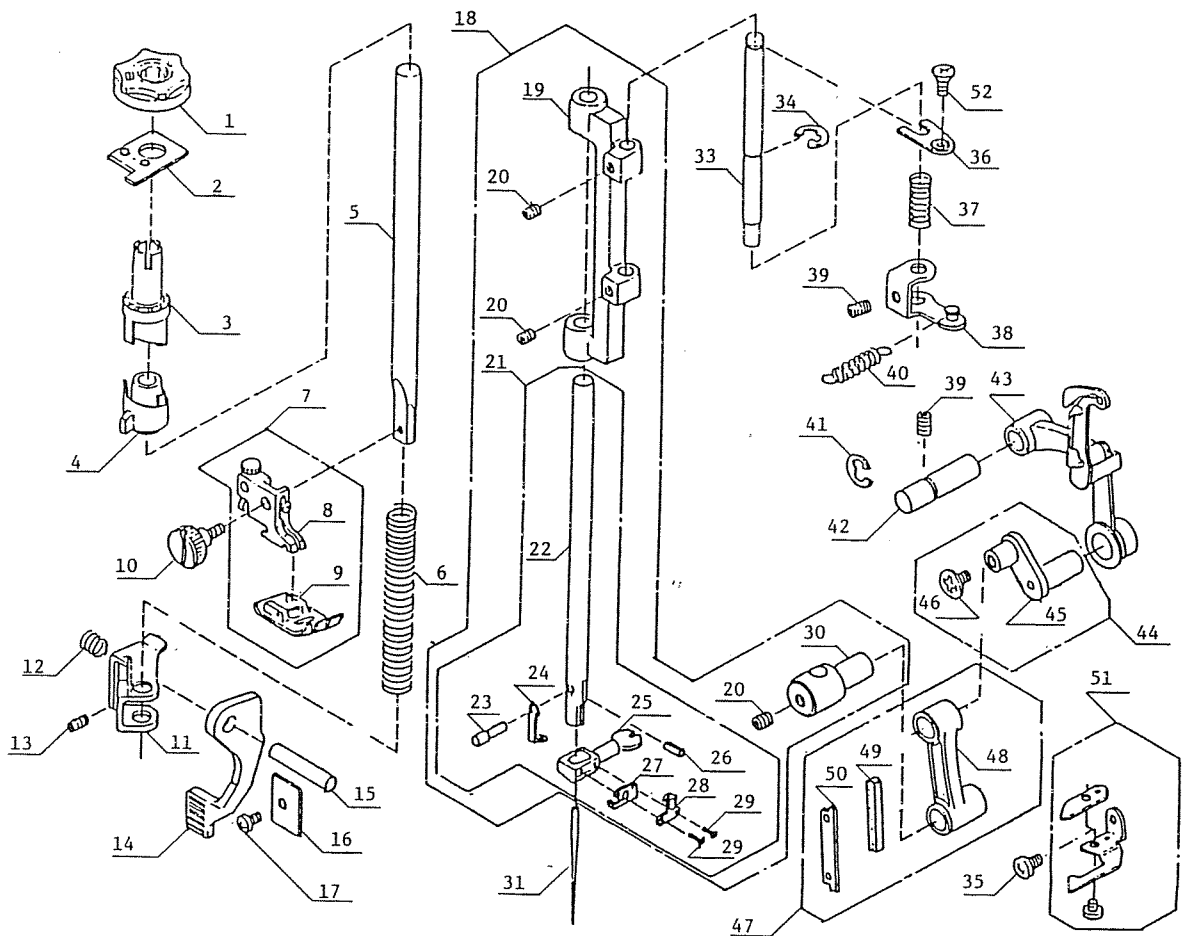


REF. NO. PART NO. DESCRIPTION

1	-----	-----
2	000126106	Cord guide
3	000101404	Set screw
4	686623009	Upper shaft unit
5	650060001	Worm gear
6	000111201	Hexagon socket screw
7	000111304	Hexagon socket screw
8	102063000	Set screw
9	102073003	Set screw
10	000030205	Snap ring
11	000101301	Set screw
12	650063004	Timing gear
13	000036706	Washer
14	673062004	Bushing
15	686026006	Thread guard
16	650609307	Balance wheel unit
17	650064304	Balance wheel
18	000107307	Set screw
19	650068009	Spring
20	000036201	Washer
21	650065006	Pin
22	650066007	Spring
23	650067307	Clutch knob
24	650174009	Washer
25	810346006	Lid screw
26	650070303	Lid
27	650156005	Zigzag rod
28	686618001	Zigzag rod unit
29	000081005	Set screw
30	000002105	Snap ring

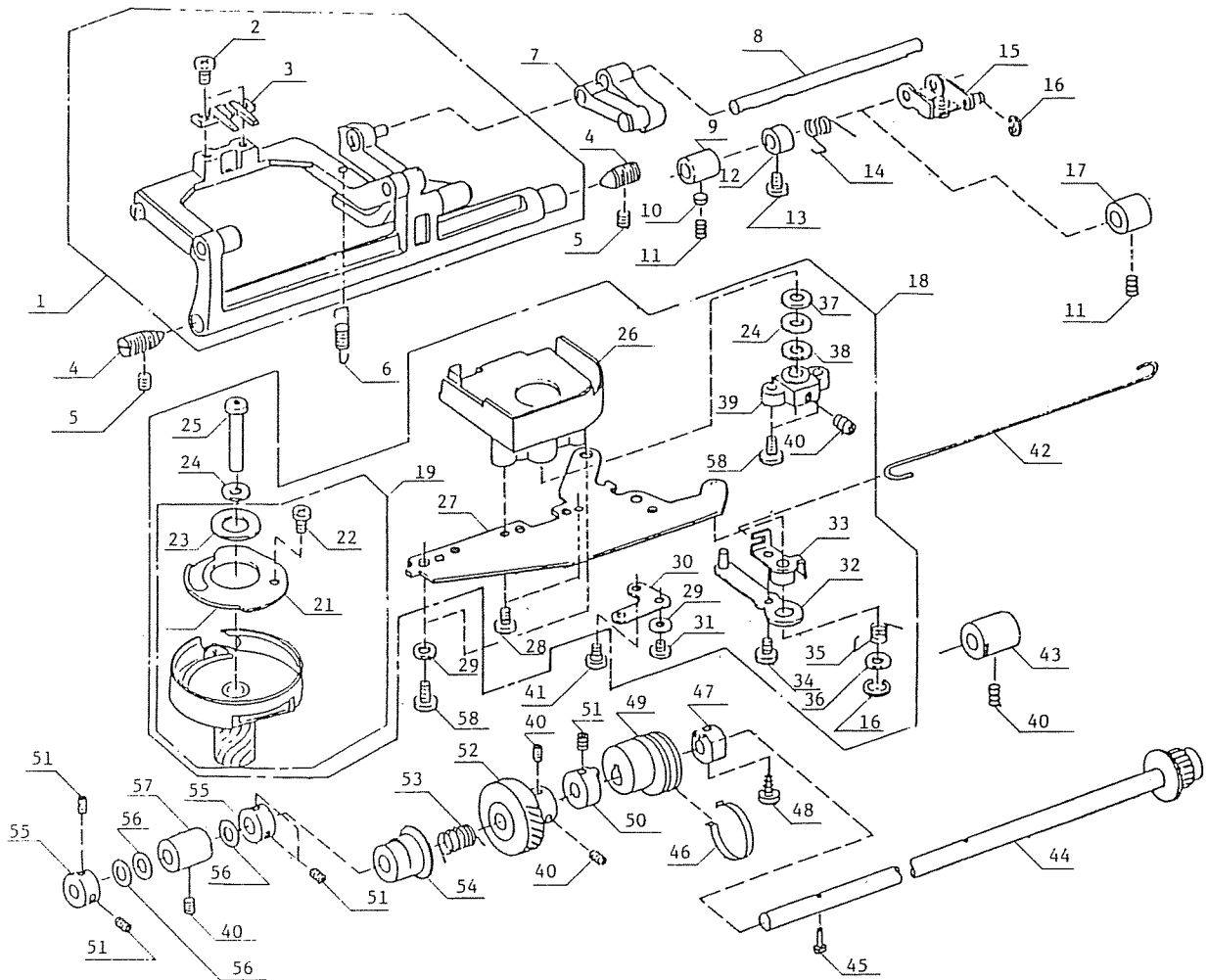
REF. NO. PART NO. DESCRIPTION

31	688004004	Zigzag rod
32	650157006	Zigzag adjusting rod
33	688002105	Shield plate
34	000111500	Hexagon socket screw
35	000061102	Nut
36	688003003	Stopper

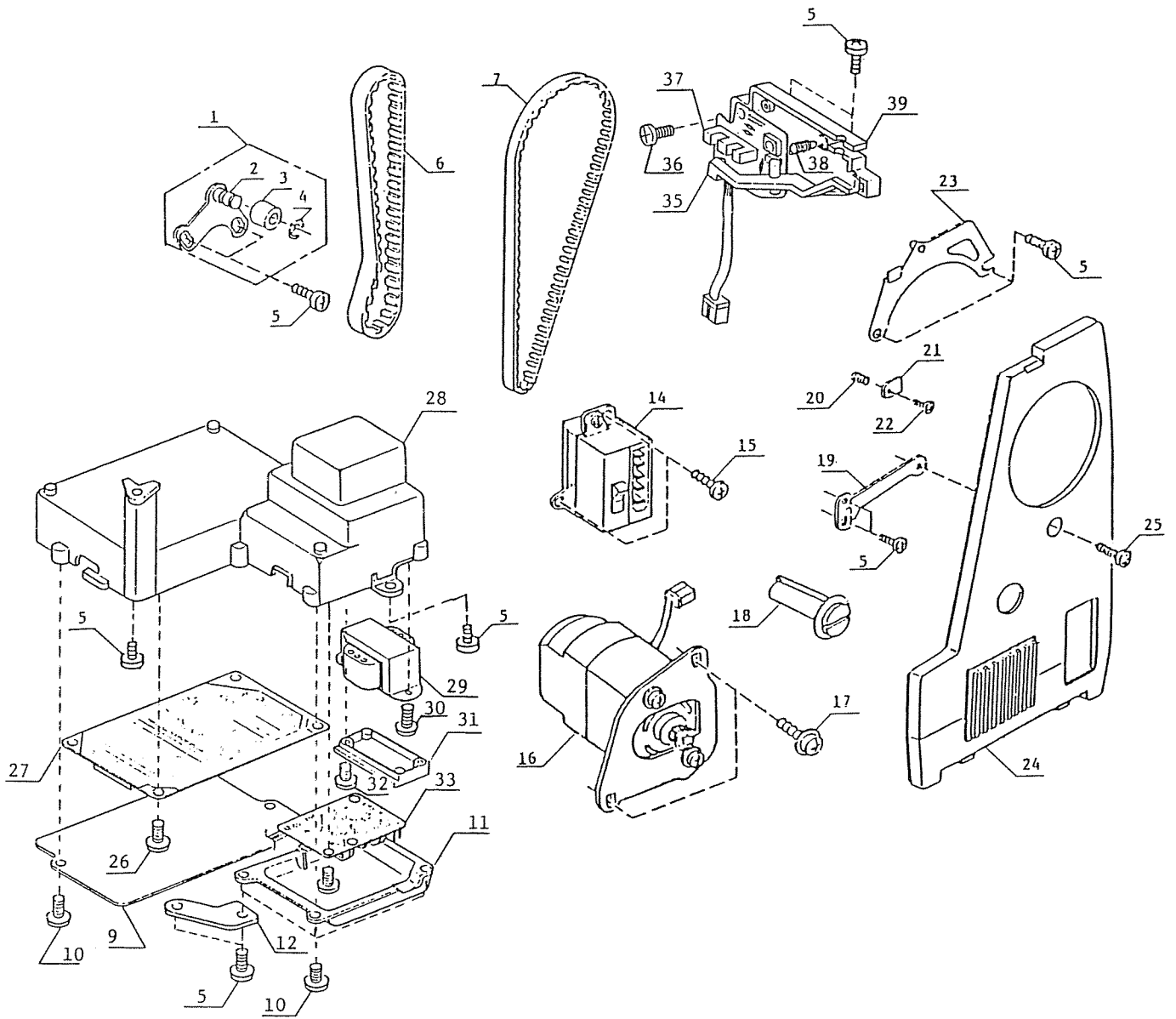


REF. NO.	PART NO.	DESCRIPTION	REF. NO.	PART NO.	DESCRIPTION
1	822065005	Pressure reg. dial	31	102408089	Needle, no. 14
2	824009007	Cam supporter	32	-----	-----
3	686027007	Cam (1)	33	650033005	Pin
4	686028008	Cam (2)	34	000001609	Snap ring
5	102801008	Presser bar	35	810220003	Set screw
6	815023009	Spring	36	687025008	Pin stopper plate
7	822525008	Presser foot & foot holder unit	37	650036008	Spring
8	804509000	Foot holder unit	38	650035007	Zigzag arm
9	822508005	Presser foot	39	000111108	Hexagon socket screw
10	102012004	Thumb screw	40	686085003	Spring
11	686074009	Presser bar guide bracket	41	000001702	Snap ring
12	102222009	Spring	42	650062003	Pin
13	000111500	Hexagon socket screw	43	822512002	Thread take-up lever unit
14	822071004	Presser bar lifter	44	627568002	Needle bar crank pin unit
15	822072005	Pin	45	627183009	Pin
16	686079004	Pin set plate	46	532041007	Lid screw
17	000081003	Set screw	47	686612005	Needle bar crank rod unit
18	686611004	Needle bar supporter unit	48	625226009	Needle bar crank rod
19	650038000	Needle bar supporter	49	650040005	Oil wick
20	000111201	Hexagon socket screw	50	650041006	Spring
21	822658---	Needle bar unit	51	650506004	Thread guide unit
22	822322003	Needle bar	52	000102209	Set screw
23	822323004	Pin			
24	822324005	Needle guide plate			
25	822506014	Needle clamp unit			
26	000004901	Spring pin			
27	822329000	Needle bar thread guide			
28	822330004	Thread guide plate			
29	000105501	Set screw			
30	650100004	Needle bar connecting stud			





REF. NO.	PART NO.	DESCRIPTION	REF. NO.	PART NO.	DESCRIPTION
1	686614007	Feed rock shaft unit	31	000101404	Set screw
2	614025002	Hinge screw	32	650098008	Feed transfer plate
3	686083001	Feed dog	33	650097007	Feed transfer arm
4	532030003	Screw center	34	000103808	Set screw
5	000113605	Set screw	35	650099009	Spring
6	650085002	Spring	36	650023002	Washer
7	650612004	Feed regulator unit	37	627192001	Washer
8	650091001	Pin	38	625102008	Washer
9	625144002	Bushing	39	650094004	Shuttle hook base
10	650175000	Washer	40	000111304	Hexagon socket screw
11	000111108	Hexagon socket screw	41	650172007	Hinge screw
12	820387000	Ring	42	650101005	Rod
13	000069605	Set screw	43	650079003	Bushing
14	650088005	Spring	44	686613006	Lower shaft unit
15	650613005	Feed adjusting arm unit	45	820161006	Pin
16	000002105	Snap ring	46	627207000	Spring
17	650092002	Bushing	47	650074008	Ring
18	650614006	Shuttle hook comp. unit	48	000121606	Set screw
19	650623008	Shuttle hook unit	49	625120105	Feed cam
20	-----	-----	50	625118007	Ring
21	627191000	Race bottom plate	51	000111201	Hexagon socket screw
22	820374004	Set screw	52	650076000	Lower shaft gear
23	627190009	Magnet	53	686035008	Spring
24	000036500	Washer	54	686036102	Cam
25	820123006	Pin	55	820166001	Ring
26	650095005	Gear guard	56	000036201	Washer
27	650096006	Hook & feed mechanism base plate	57	650078002	Bushing
28	000107204	Set screw	58	000081005	Set screw
29	000070506	Washer			
30	650171006	Position setting plate			

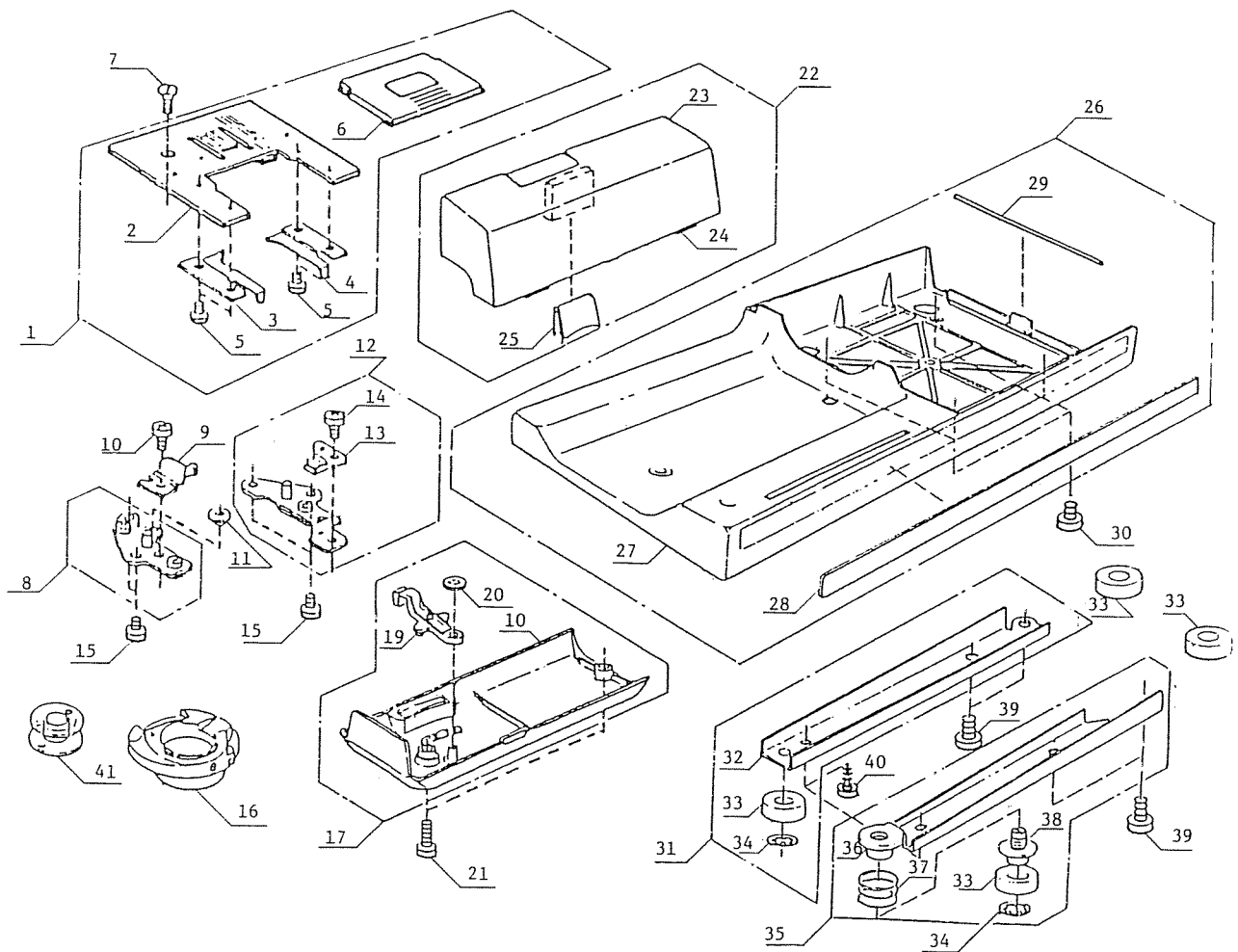


REF. NO.    PART NO.    DESCRIPTION

1	650621006	Idler unit
2	824059002	Idler base
3	625217100	Idler
4	000002806	snap ring
5	000081005	Set screw
6	650071005	Timing belt
7	650166008	Timing belt
8	-----	-----
9	688031000	"B" plate cover
10	000076317	Set screw
11	688032104	"C" plate cover
12	688014007	Case set plate
13	-----	-----
14	823516205	Machine socket (120V)
14	823516102	Machine socket (Canada)
	824521103	Machine socket (240V)
15	000101703	Set screw
16	013093114	Motor (120V)
	023194117	Motor (240V)
17	000115504	Set screw
18	650162303	Feed balancing dial
19	650164006	Belt cover set plate
20	000111201	Hexagon socket screw
21	685049002	Cord guide
22	000101404	Set screw
23	687060005	Handle set plate
24	687061109	Belt cover
25	000101806	Set screw

REF. NO.    PART NO.    DESCRIPTION

26	000107318	Set screw
27	688511009	"B" plate unit (120V)
	688515003	" " " (240V)
28	688030102	Housing
29	688509004	Transformer (120V)
	688514002	" " (240V)
30	000107318	Set screw
31	688012108	Transformer cover
32	000107318	Set screw
33	688512000	"C" plate unit (120V)
	688516004	" " " (240V)
34	000107318	Set screw
35	688016009	Switch regulating arm
36	000107318	Set screw
37	688506001	"D" plate unit
38	688017000	Spring
39	688015008	"D" plate frame



REF. NO.	PART NO.	DESCRIPTION
1	686622008	Needle plate unit
2	686511003	Needle plate
3	822005007	Slide plate guide (L)
4	822006008	Slide plate guide (R)
5	820374004	Set screw
6	822004006	Slide plate
7	820390109	Set screw
8	650602001	Needle plate set plate unit (L)
9	822011006	Bobbin holder stopper
10	000103808	Set screw
11	822314002	Nut
12	650603002	Needle plate set plate unit (R)
13	627567001	Bobbin holder stopper unit
14	810220003	Set screw
15	000107503	set screw
16	627569003	Bobbin holder unit
17	686604004	Bed cover unit
18	686006000	Bed cover
19	686007001	Drop feed lever
20	000013903	CS ring
21	000101703	Set screw
22	686605005	Extension table unit
23	686009003	Extension table lid
24	686008002	Extension table body
25	686010007	Spring
26	686603209	Base unit
27	686004008	Base
28	686005102	Measure
29	817188009	Spring
30	000081005	Set screw

REF. NO.	PART NO.	DESCRIPTION
31	686602002	Sole (2) unit
32	686003007	Sole (2)
33	605074008	Cushion
34	813123004	CS ring
35	686601001	Sole (1) unit
36	686002006	Sole (1)
37	820351005	Spring
38	820350004	Level adjusting screw
39	000066808	Set screw
40	000075604	Set screw
41	102261103	Bobbin

STANDARD ACCESSORIES AND ATTACHMENTS

<u>Q'TY</u>	<u>PART NO.</u>	<u>DESCRIPTION</u>
1	688800008	Instruction book (English & French)
1	647802003	Screwdriver (large)
1	647803004	Screwdriver (small)
1	102403109	Threading felt
4	102261103	Bobbin
1	560406001	Seam ripper
1	802424004	Lint brush
1	625031005	Additional spool pin
1	822019004	Spool holder (small)
1	822020008	Spool holder (large)
1	540401026	Set of needles
1	802422002	Quilting guide
1	820809014	Hemmer foot (D)
1	823803006	Zipper foot (E)
1	820817015	Blind stitch hem foot (G)
1	820801005	Buttonhole foot (B)
1	820804019	Overlock foot (C)
1	463710007	Carrying case(cover) ----- JANOME brand
1	463711008	Carrying case(cover) ----- NEW HOME brand
1	041970111	Foot controller (Australia)
1	041970214	Foot controller (U. K.)
1	031570312	Foot controller (U. S. A.)
1	031570415	Foot controller (Canada)
1	041970317	Foot controller (New Zealand)

