

# *SERVICING MANUAL*

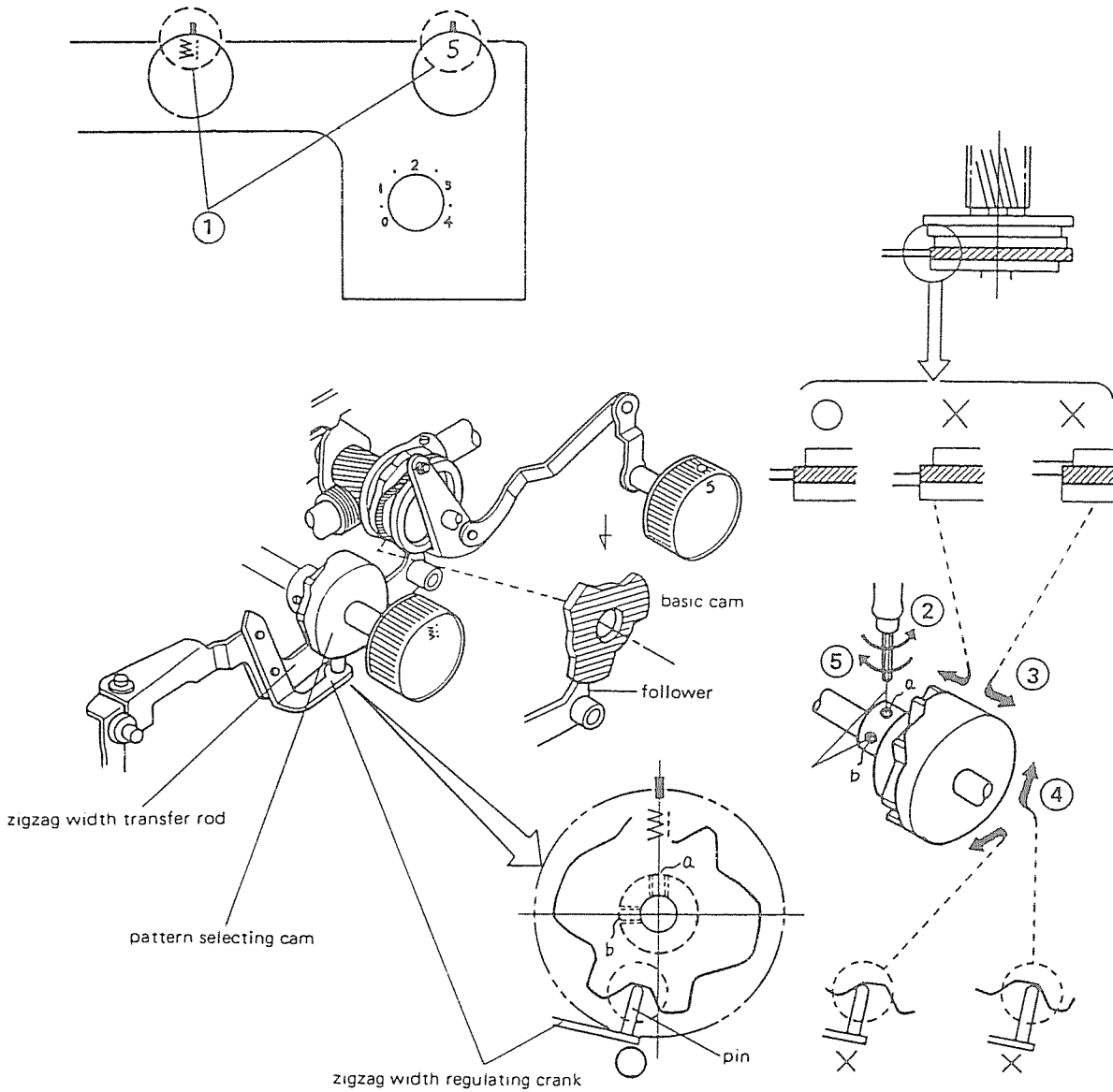
***MODEL  
640***

## CONTENTS

TO POSITION PATTERN SELECTING CAM .....	1
TO POSITION ZIGZAG WIDTH REGULATING CRANK .....	2
TO POSITION AUTOMATIC REVERSE SELECTING CAM .....	3
TO CORRECT STAGGERED STRAIGHT STITCH .....	4
ADJUSTMENT FOR TIMING OF NEEDLE SWING .....	5
TO ADJUST NEEDLE DROP POSITION IN NEEDLE HOLE .....	6
ADJUSTMENT OF "M" NEEDLE POSITION .....	7
TO POSITION PRESSER BAR .....	8
ADJUSTMENT OF CLEARANCE BETWEEN NEEDLE AND HOOK .....	9
ADJUSTMENT OF HEIGHT OF NEEDLE BAR .....	10
ADJUSTMENT OF HOOK TIMING .....	11
ADJUSTMENT OF LOWER SHAFT THRUST PLAY .....	12
ADJUSTMENT OF FEED LIFTING CAM POSITION .....	13
ADJUSTMENT OF HEIGHT OF FEED DOG .....	14
ADJUSTMENT OF PITCH DIFFERENCE IN FEED BETWEEN FORWARD AND REVERSE STITCHES .....	15
ADJUSTMENT OF PITCH DIFFERENCE IN STRETCH STITCH FEEDING .....	16
ADJUSTMENT FOR "O" POSITION OF THREAD TENSION .....	17


TO POSITION PATTERN SELECTING CAM

- 1 Set stitch width regulator knob at "5" and pattern selector knob at "W".
- 2 Loosen two hexagon socket screws (a & b) on collar of pattern selecting cam.
- 3 Move selecting cam axially to position the follower of zigzag width transfer rod to the middle of convex part of basic zigzag cam which is the second cam of the cam block.
- 4 In this condition, turn selecting cam so that screw (a) comes to the top, then adjust the cam to position pin on zigzag width regulating crank to the middle of selecting cam groove as shown below.
- 5 Tighten two hexagon socket screws (a & b).
- 6 Turn pattern selector knob to make sure that it selects each pattern correctly and smoothly.

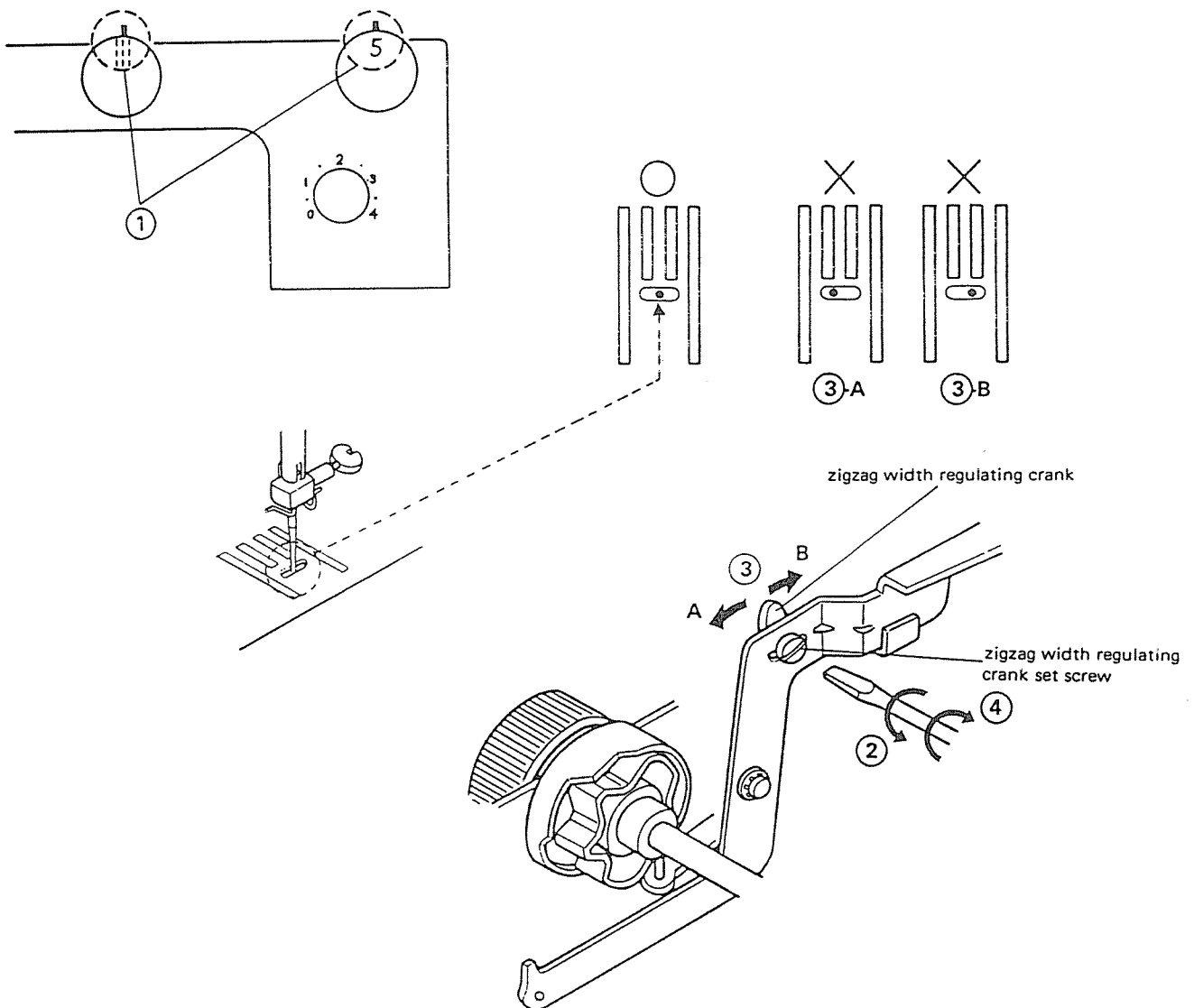


## TO POSITION ZIGZAG WIDTH REGULATING CRANK


If pattern selecting is not smooth, make adjustment as follows:

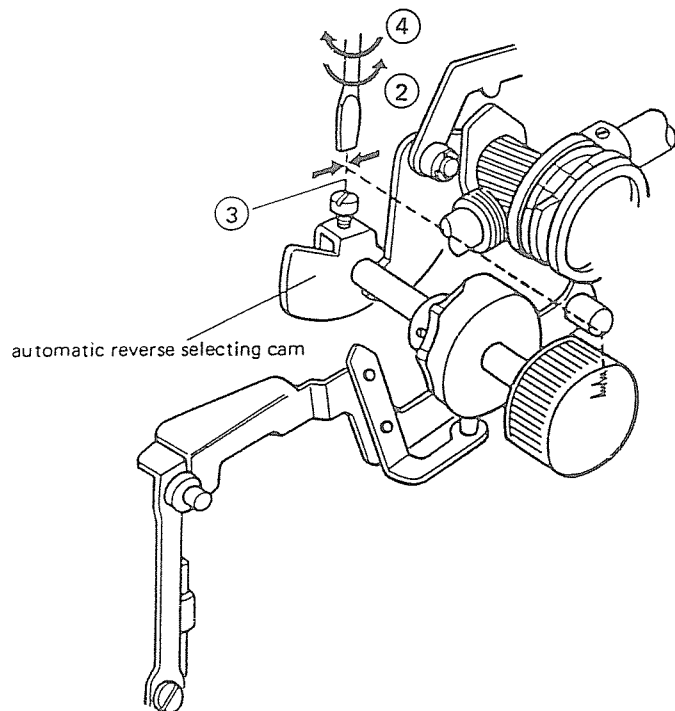
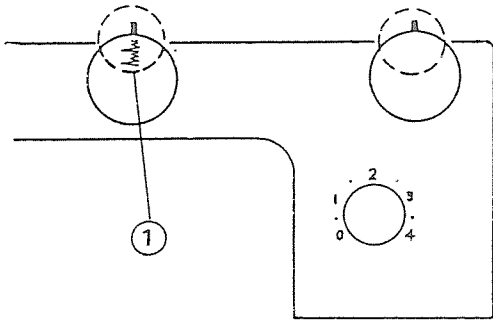
- 1 Set pattern selector knob at “” and stitch width regulator knob at “5”.
- 2 Loosen zigzag width regulating crank set screw.
- 3 Move zigzag width regulating crank to position needle at the center of needle hole as shown below.
- 4 Tighten zigzag width regulating crank set screw.

Note: Make sure the “M” needle position is correct.



### TO POSITION AUTOMATIC REVERSE SELECTING CAM

1. Set pattern selector knob at “  ”.
2. Loosen set screw on automatic reverse selecting cam.
3. Turn automatic reverse selecting cam so that head of the set screw comes to top.
4. Tighten the set screw.

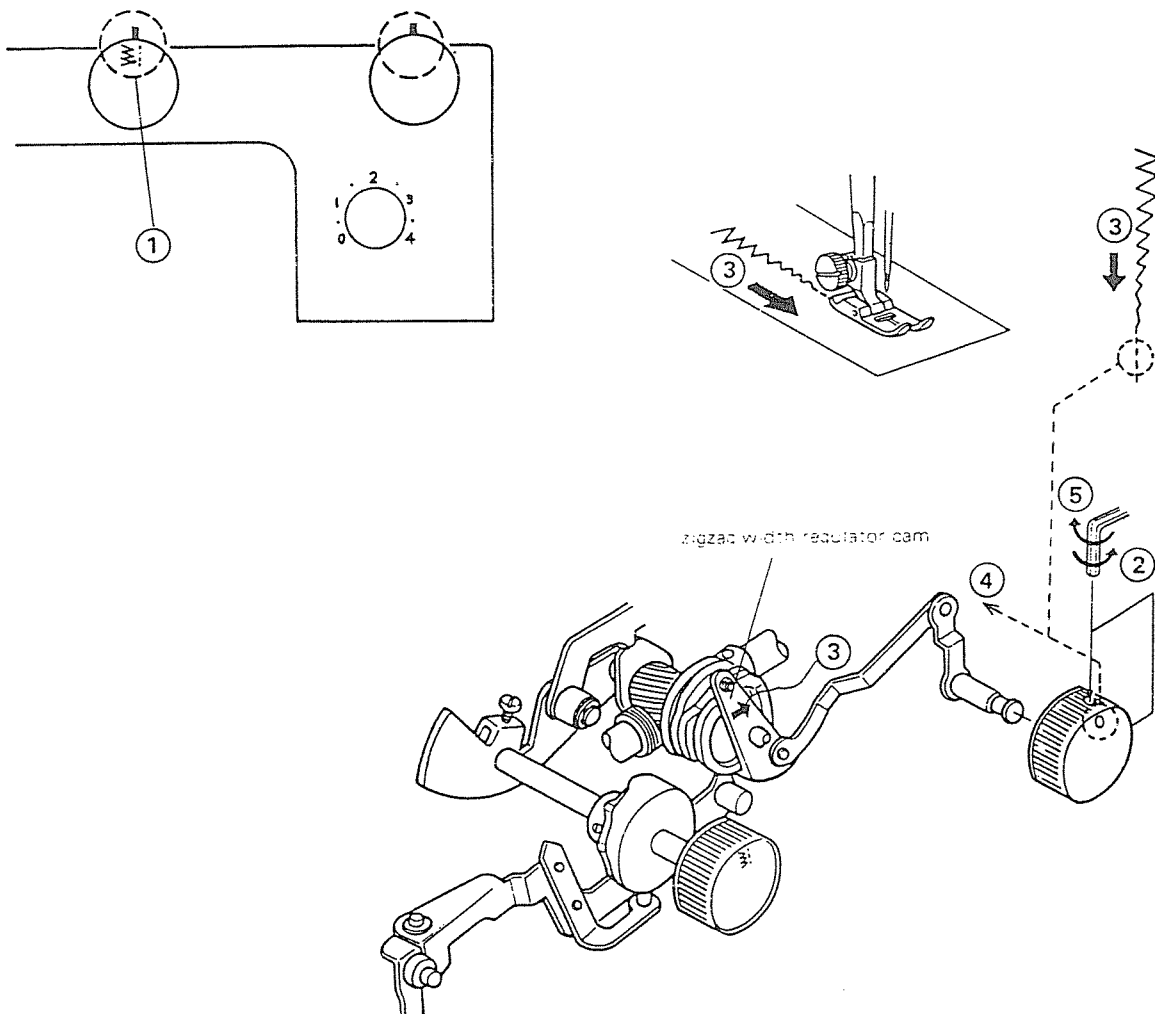


## TO CORRECT STAGGERED STRAIGHT STITCH

If zigzag movement of needle bar still remains in straight stitching by setting zigzag width regulator at "0", make adjustments as follows:

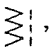
- 1 Set pattern selector knob at "Z".
- 2 Loosen two screws of zigzag width regulator knob.
- 3 Turn zigzag width regulating cam in the direction of arrow little by little until zigzag movement of needle bar disappears.
- 4 Set zigzag width regulator knob at "0".
- 5 Tighten the two screws while holding the knob and dial shaft in the position.

Note: \*Make sure that the zigzag width regulator knob turns smoothly after adjustment.

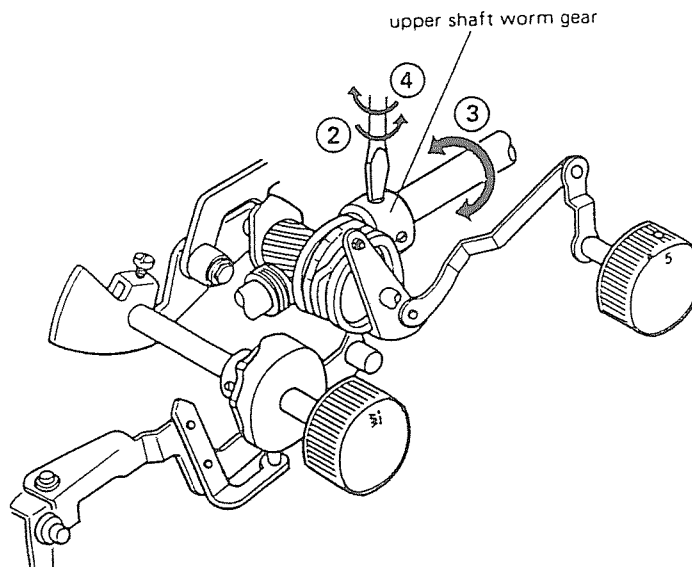
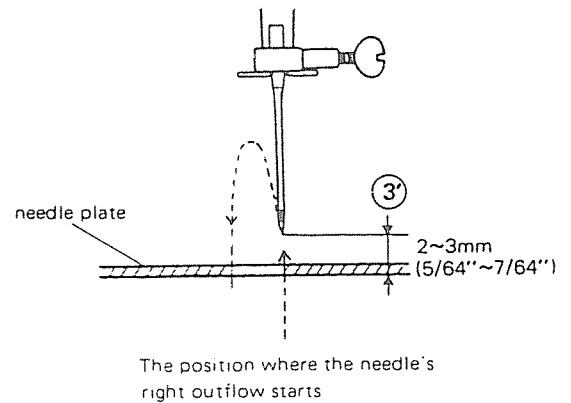
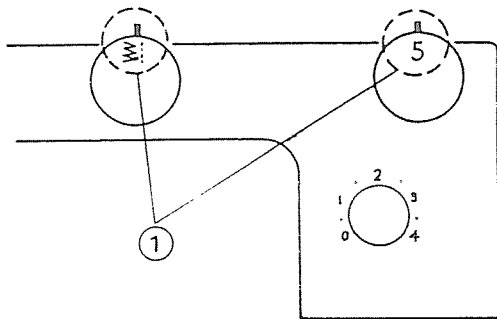


### ADJUSTMENT FOR TIMING OF NEEDLE SWING

The rise and fall movement of needle between the lowest position and the upper surface of needle plate should be perpendicular to the upper surface of needle plate. If needle bar is not timed correctly for zigzag stitching, needle will move sidewise while it is still in the fabric. It is ideal that the needle's right outflow starts from the position 2 ~ 3mm (5/64" ~ 7/64") above needle plate.


- 1 Set zigzag width regulator knob at "5" and pattern selector knob at "  "
- 2 Loosen two set screws for upper shaft worm gear fixing.
- 3 Hold one of the screws at the slot with a screwdriver in order to keep upper shaft worm gear from turning and turn balance wheel toward you to make adjustment. The standard start point of needle's right outflow should be 2 ~ 3mm (5/64" ~ 7/64") above needle plate.
- 4 Tighten two set screws firmly without fail after adjustment.

Note: After adjustment, make sure pitch difference in stretch stitch feeding is correct.

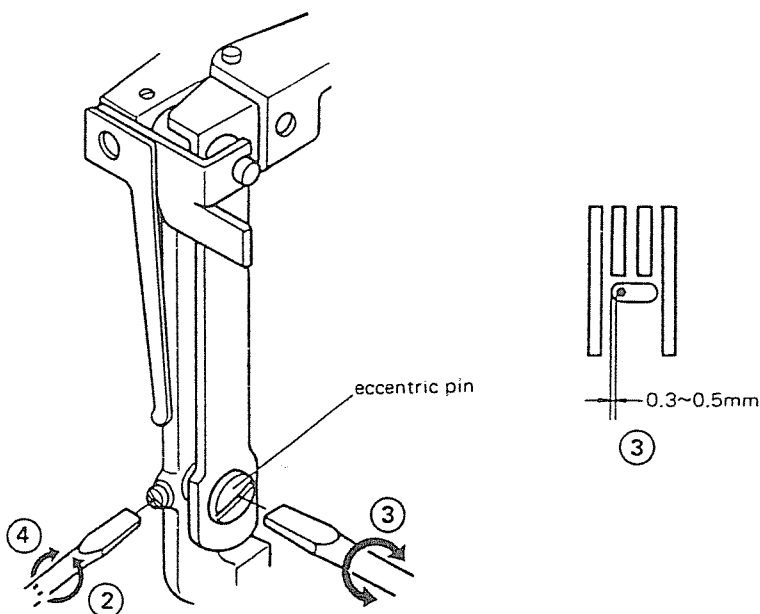
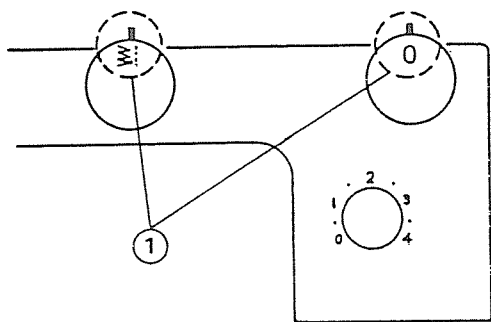


### TO ADJUST NEEDLE DROP POSITION IN NEEDLE HOLE

Adjustment of needle drop is made as follows:

- 1 Set zigzag width regulator knob at "0" and pattern selector knob at "  ".
- 2 Loosen set screw for eccentric pin.
- 3 Turn eccentric pin to adjust. The clearance between needle and the left side of needle hole should be 0.3 ~ 0.5mm (1/8" ~ 3/16").
- 4 Tighten set screw.

**Note:** Replace presser foot with straight stitch presser foot and set stitch width regulator dial at "M" to make sure that needle drop at "M" needle position is correct.



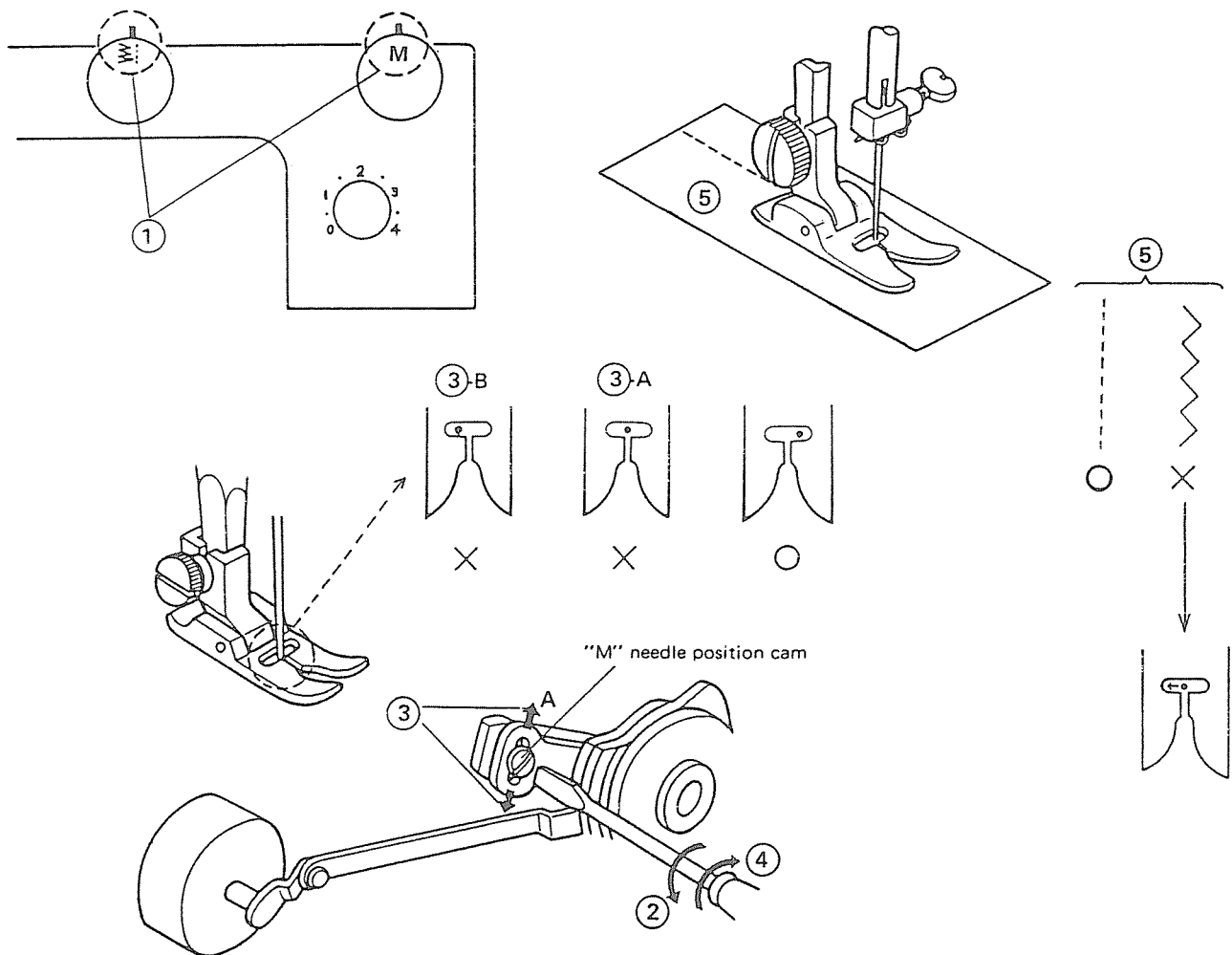


### ADJUSTMENT OF "M" NEEDLE POSITION

If needle does not point in the center of needle hole by setting zigzag width regulator knob at "M", adjust the position as follows:

Note: Before adjustment, make sure presser bar position is correct.

- 1 Set the zigzag width regulator knob at "M" and pattern selector knob at "Z".
- 2 Loosen set screw.
- 3 Move "M" needle position cam to adjust position of needle which should be positioned center of needle hole of presser foot.
- 4 Tighten set screw.
- 5 Make sure that straight stitch should not stagger at "M" needle position after adjustment. If it staggers, move the needle drop slightly to the left.



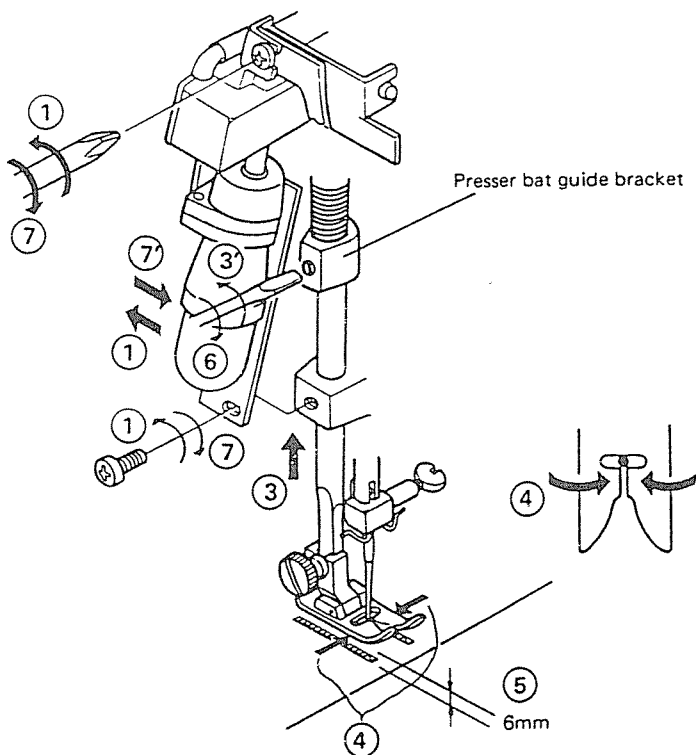
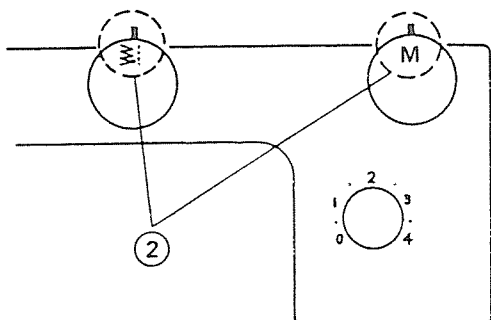
### TO POSITION PRESSER BAR

When needle drops in the center of needle hole of presser foot by setting zigzag width regulator dial at "M" and pattern selector knob at "Z", the position of presser bar is correctly adjusted.

If not, make adjustment as follows:

- 1 Take off lower set screw of lamp socket unit, loosen upper set screw and tilt the lamp socket unit as shown.
- 2 Set pattern selector knob at "Z", and zigzag width regulator knob at "M".
- 3 Raise presser bar lifter and loosen set screw of presser bar guide bracket.
- 4 Adjust the position of presser bar by moving it so that the sides of presser foot run parallel to the feed dog.
- 5 In this condition, adjust height of presser bar by moving it upward or downward to make clearance between base of presser foot and upper surface of needle plate.
- 6 Tighten set screw of presser bar guide bracket.
- 7 Set lamp socket unit and tighten both set screws firmly.


Note: Make sure that the needle bar supporter spring is correctly positioned on the needle bar supporter.



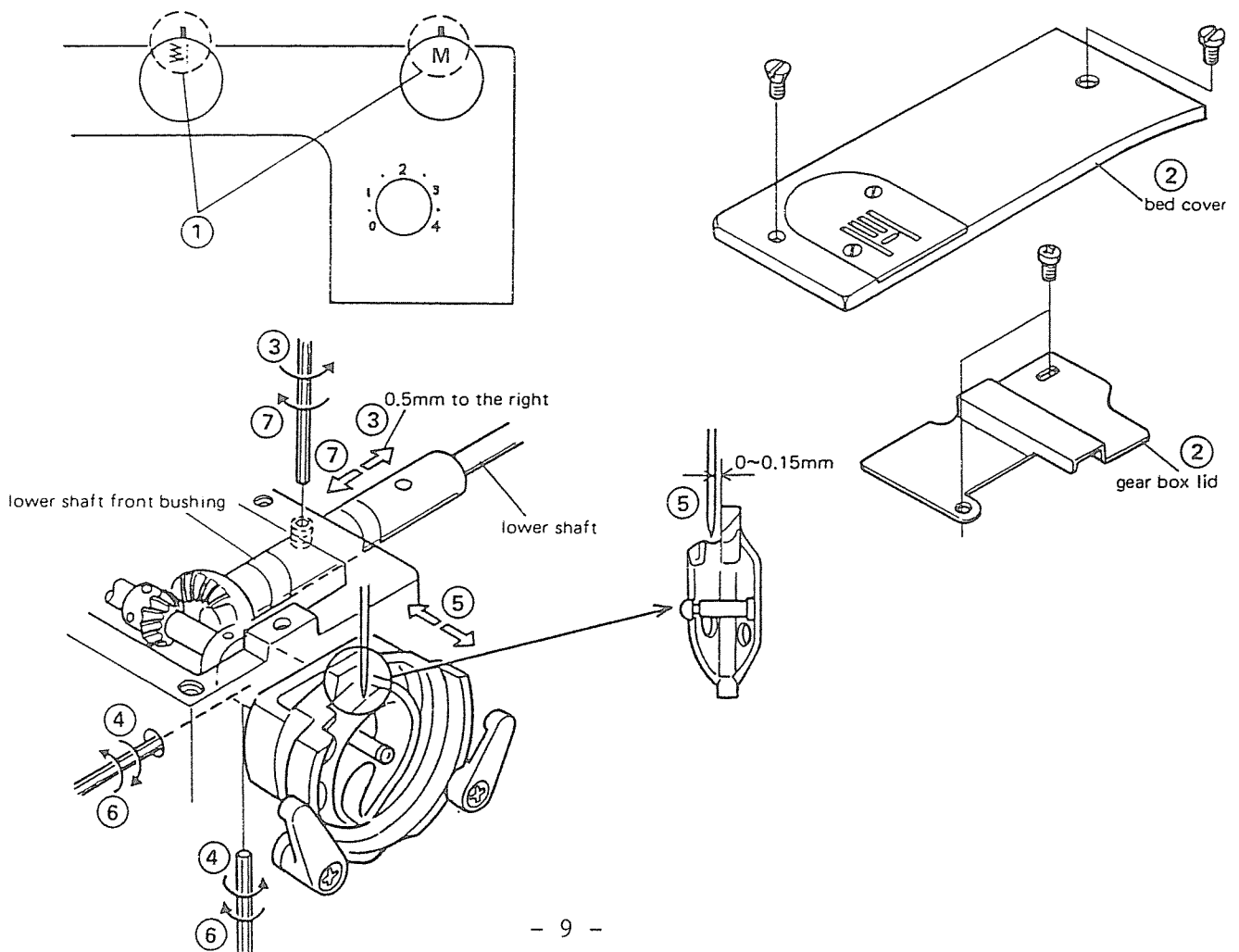
## ADJUSTMENT OF CLEARANCE BETWEEN NEEDLE AND HOOK

For perfect stitching the needle must be as near as possible to hook without touching it. Skipped stitches are often caused by incorrect clearance between needle and hook.

The clearance between needle and hook should be 0 ~ 0.15mm (0 ~ 3/512"). Using a perfectly straight needle, test in the following manner:

- 1 Set pattern selector knob at "  " and zigzag width regulator knob at "M".
  - 2 Take off bed cover and gear box lid.
  - 3 Loosen lower shaft front bushing set screw and move lower shaft 0.5mm to the right. Then, tighten lower shaft front bushing set screw temporarily.
  - 4 Loosen shuttle race set screws.
  - 5 Adjust the clearance between needle and hook by moving shuttle race body.
    - \* Do not turn the shuttle race body when adjusting.
    - \* The clearance should be 0 to 0.15mm.
  - 6 Tighten shuttle race set screws.
  - 7 Loosen lower shaft front bushing set screw and move lower shaft to the left while adjusting backlash of gears.
    - Then, tighten lower shaft front bushing set screw firmly.
- Note: Make sure that the machine runs smoothly. If not, cause a little more backlash.
- 8 Set bed cover and gear box lid to the body of sewing machine with screws.

Note: After adjustment, check the feed lifting cam position with reference to page 24.

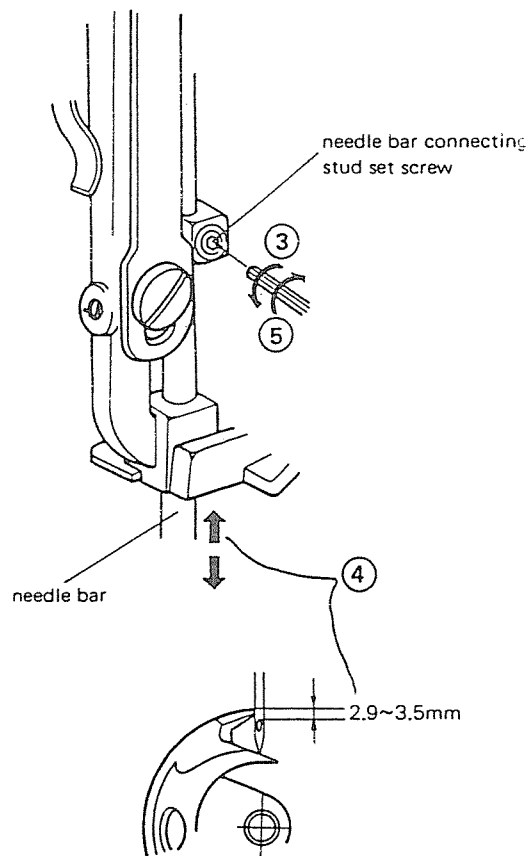
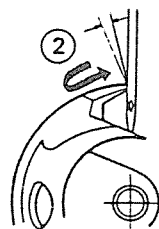
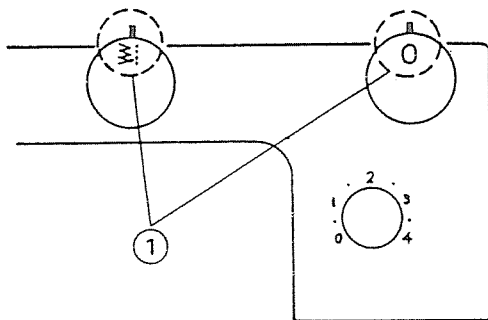


## ADJUSTMENT OF HEIGHT OF NEEDLE BAR

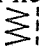
Turn balance wheel toward you until needle bar is at its lowest position. Then again turn balance wheel until the tip of hook meets the left side of the needle. The distance between the upper tip of the needle hole and the top of the hook should be 2.9 ~ 3.5mm (7/64" ~ 17/128").

If not, make adjustment as follows:

- 1 Set zigzag width regulator knob at "0" and pattern selector knob at 1 "  $\sum$  ".
- 2 Turn balance wheel toward you until the tip of hook comes to the lowest point of its travel and then to the left side of the needle.
- 3 Loosen needle bar connecting stud set screw.
- 4 Move needle bar lengthwise to adjust the height of needle bar by 2.9 ~ 3.5mm.  
Note: Do not turn the needle bar when adjustment is made.
- 5 Tighten needle bar connecting stud set screw.

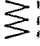


### ADJUSTMENT OF HOOK TIMING

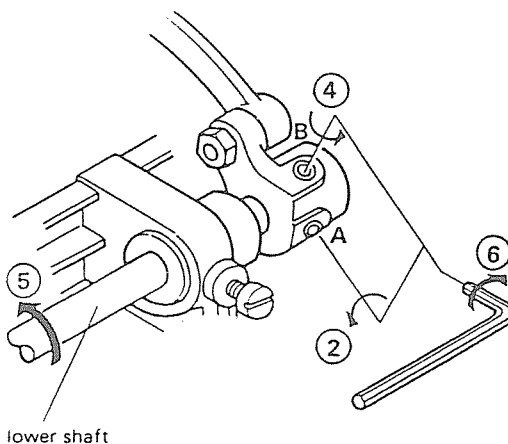
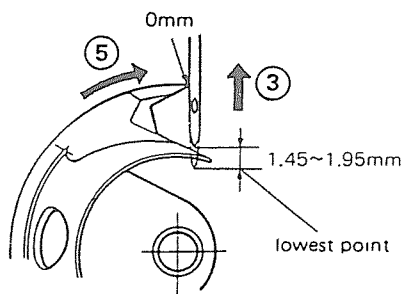
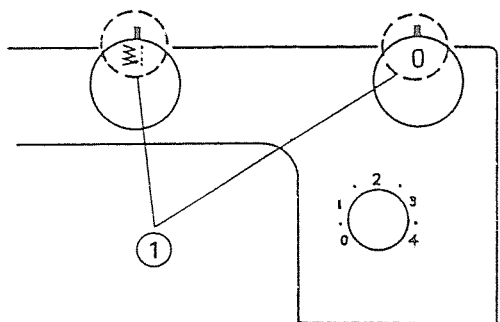
Turn balance wheel toward you until needle bar is at its lowest position while zigzag regulator knob is set at “0” and pattern selector knob at “”. Then again turn the balance wheel until the tip of hook meets the left side of the needle.

Amount of this needle bar movement indicates hook timing.

The standard amount should be  $1.7 \pm 0.25$ mm.

- 1 Set pattern selector knob at “” and zigzag width regulator knob at “0”.
- 2 Loosen set screw (a).
- 3 Turn balance wheel toward you until needle bar comes to 1.7mm above from its lowest position.
- 4 Loosen set screw (b).
- 5 Hold balance wheel with your hand to prevent turning of upper shaft and turn lower shaft in the direction of arrow until the tip of shuttle hook meets the left side of needle.
- 6 Tighten set screws (a & b).

Note: After adjustment, check the feed lifting cam position with reference to page 24 .



## ADJUSTMENT OF LOWER SHAFT THRUST PLAY

If there is a large play on lower shaft in the thrust direction, make adjustment as follows:

- ° The standard amount of lower shaft thrust play is less than 0.03mm.

- 1 Take off bed cover and gear box lid.
- 2 Loosen feed lifting cam set screw and move feed lifting cam to the right slightly. Then, tighten the screw temporarily.

Note: Do not turn the feed lifting cam when loosening the set screw.

- 3 Loosen lower shaft front bushing set screw and thrust the lower shaft front bushing toward gear while adjusting the play on the lower shaft and backlash of gears.

- °The standard amount of backlash is less than 0.3mm at the point of shuttle driver.

- 4 Tighten lower shaft front bushing set screw.

- °Check the play and backlash after tightening the screw.

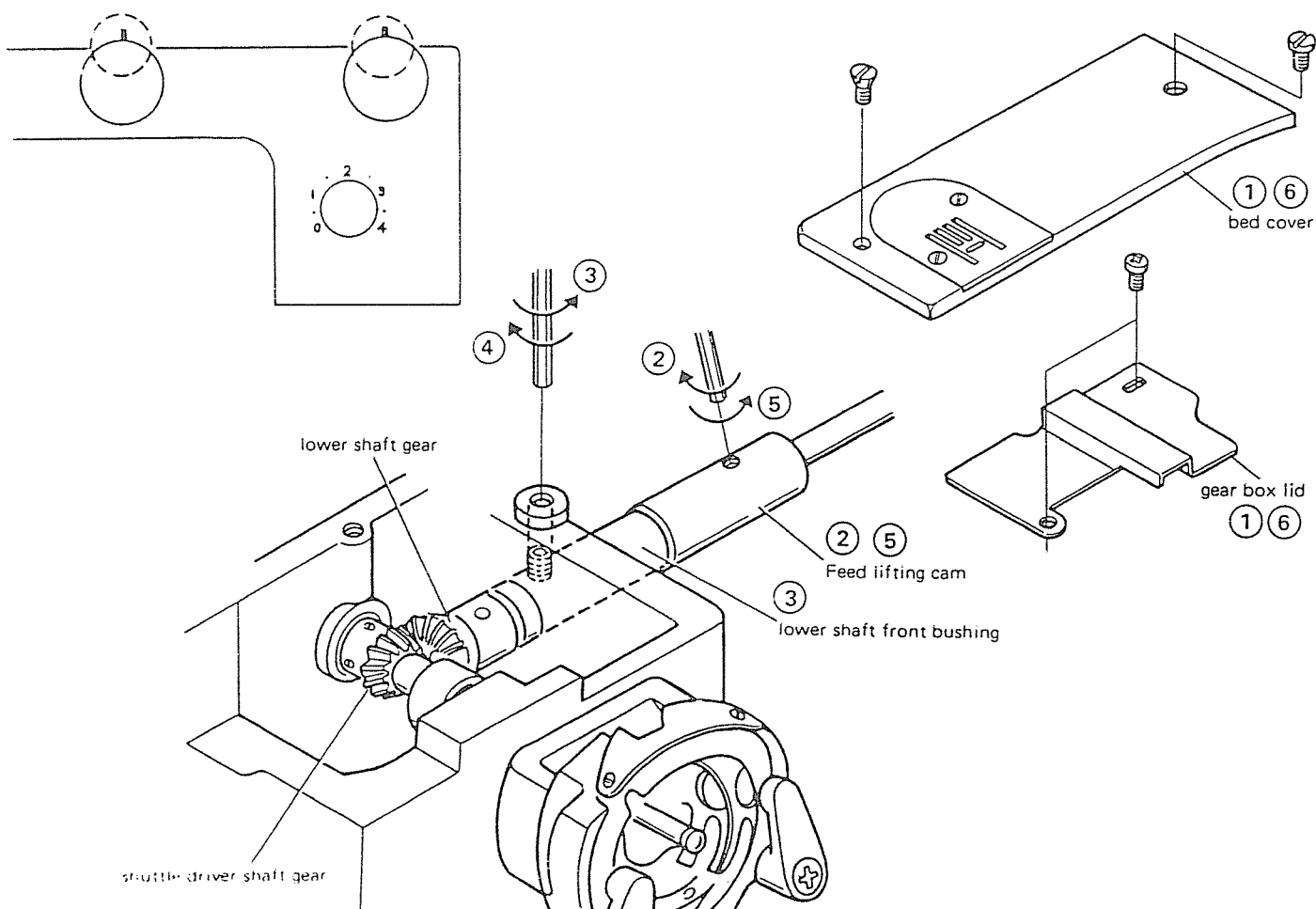
- 5 Loosen feed lifting cam set screw and move the feed lifting cam to the left until it touches lower shaft front bushing.

Then, tighten the set screw.

Note: Do not turn the feed lifting cam all the time.

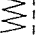
- 6 Set bed cover and gear box lid back to the machine body with screws.

Note: After adjustment, make sure that hook timing, feed lifting cam position and height of feed dog are correctly adjusted.

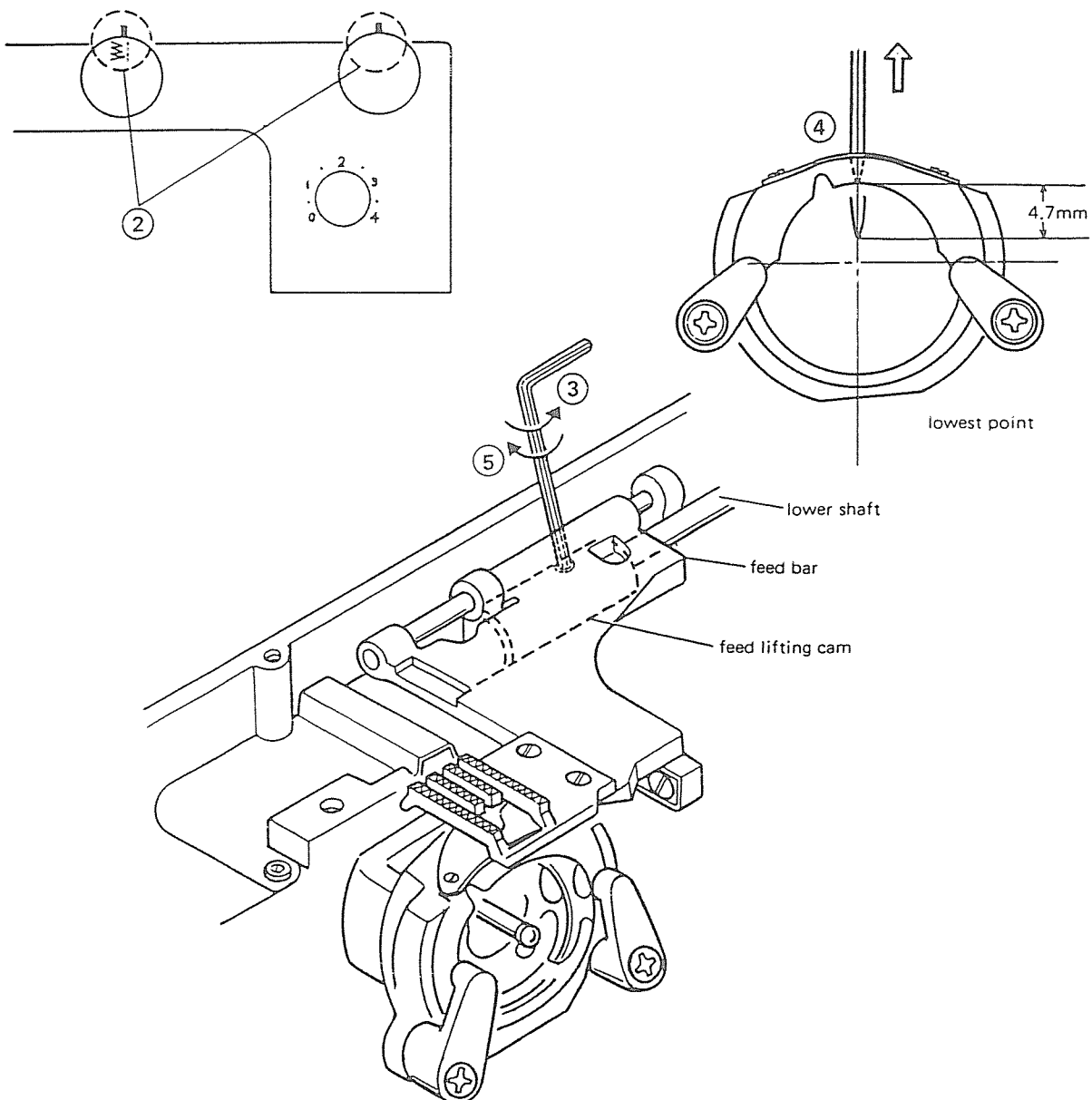


## ADJUSTMENT OF FEED LIFTING CAM POSITION

Adjust the feed lifting cam position always after the correct hook timing and clearance between needle and shuttle hook have been obtained.

- 1 Take off bed cover.
- 2 Set pattern selector knob at “” and zigzag width regulator knob at “M”.
- 3 Loosen feed lifting cam set screw with hexagon socket wrench.
- 4 While holding the screw with the wrench to prevent turning of feed lifting cam, turn balance wheel toward you until tip of needle comes to the point 4.7mm above from its lowest position.  
This position may be alternately indicated that the tip of needle points the same level as inner face of shuttle race ring as illustrated below.
- 5 Tighten the feed lifting cam set screw firmly while adjusting lower shaft thrust play.
- 6 Attach bed cover.

Note: After adjustment, make sure that height of feed dog, pitch difference in feed between forward and reverse stitches and pitch difference in stretch stitch feeding are correct.



## ADJUSTMENT OF HEIGHT OF FEED DOG

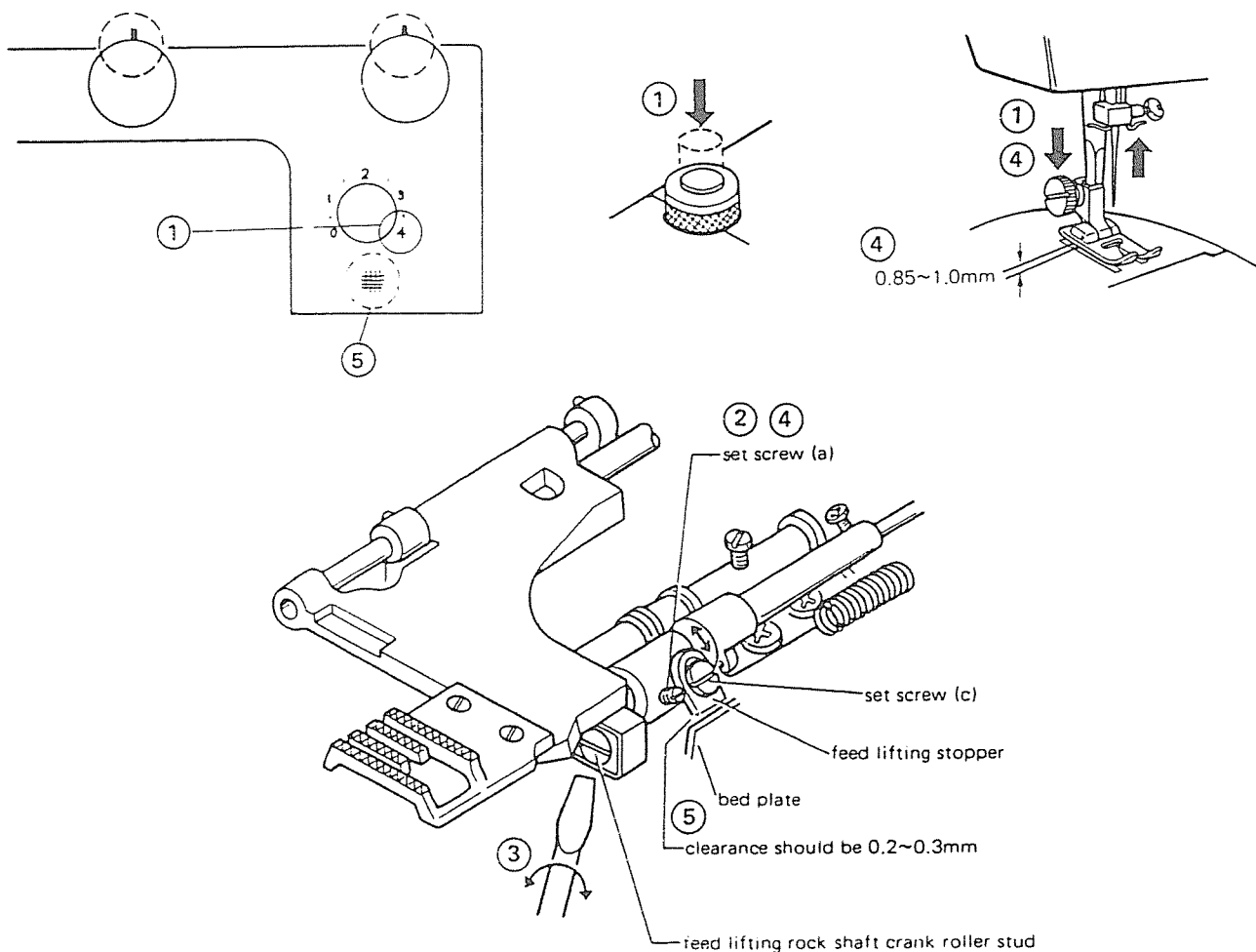
Set stitch length regulator knob at "4", lower presser foot (the pressure regulator should be set at red line) and turn balance wheel toward you until needle bar comes to highest point of its travel. In this condition, height of feed dog above needle plate should be 0.85 ~ 1.0mm (17/512" ~ 3/8").

When stitch length regulator knob is set at "⦿", feed dog should be below top surface of needle plate and should not touch hook race body (unit).

To adjust:

- 1 Set stitch length regulator knob at "4", (pressure regulator set at red line), turn balance wheel toward you until needle bar comes to highest point of its travel and raise presser foot. Then remove free arm cover.
- 2 Loosen set screw (a).
- 3 Turn feed lifting rock shaft crank roller stud (b) with screw driver to make adjustment.
- 4 Attach free arm cover by tightening free arm cover set screw without fail and lower presser foot. Make sure that correct height of feed dog (0.85 ~ 1.0mm) is obtained. Also make sure that feed dog is below top surface of needle plate and does not touch hook race body (unit) with stitch length regulator knob being set at "⦿". Then remove free arm cover again and tighten set screw (a).
- 5 Set stitch length regulator knob at "4" and turn balance wheel toward you until feed dog comes to lowest point of its travel. Loosen set screw (c) and make adjustment that the clearance between feed lifting stopper and bed plate should be 0.2 ~ 0.3mm (5/64" ~ 15/128"). Then tighten set screw (c) and attach free arm cover.

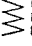
Note: After adjustment, make sure that pitch difference in feed and buttonhole feeding is correct.

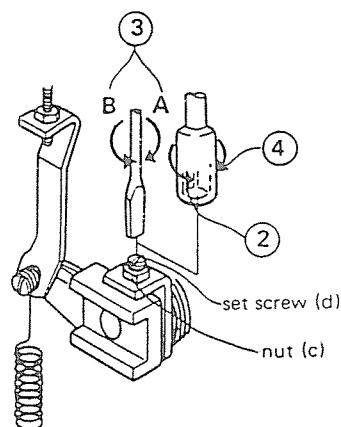
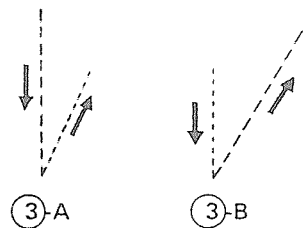
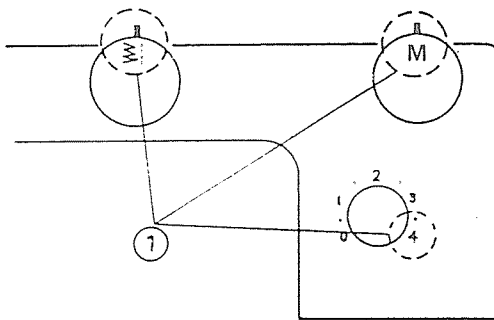




## ADJUSTMENT OF PITCH DIFFERENCE IN FEED BETWEEN FORWARD AND REVERSE STITCHES


Count 10 stitches in forward straight stitching. Then, see how many stitches in the same length of reverse straight stitching. The variance of 7.5 to 13.5 stitches in reverse stitching against 10 stitches in forward stitching is considered acceptable for straight sewing. If not, make adjustment as follows:

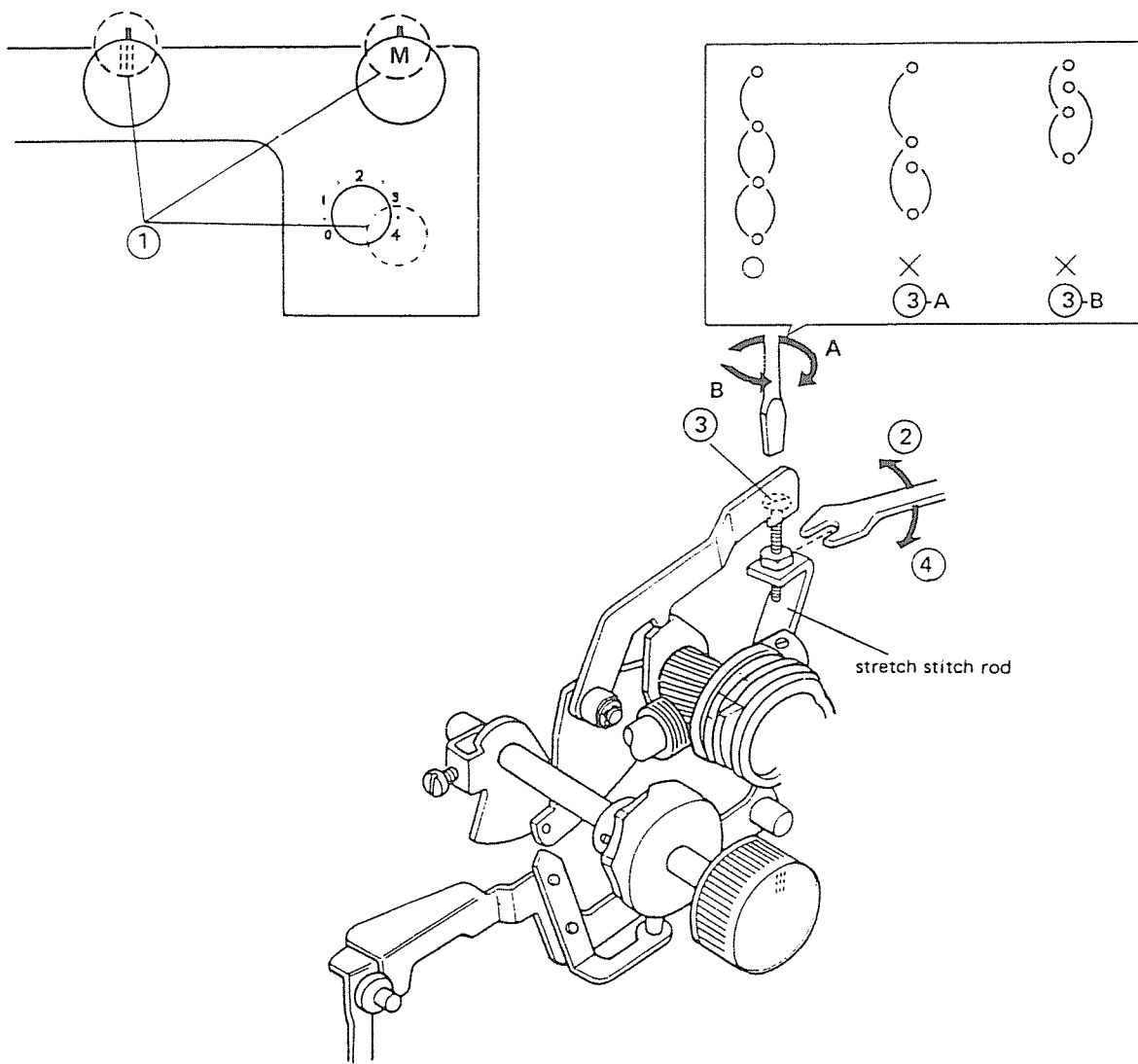
- 1 Set pattern selector knob at “”, stitch width regulator knob at “M” and stitch length regulator knob at “4”.
  - 2 Loosen nut (c).
  - 3
    - a) If forward stitches are coarser than reverse stitches, turn screw (d) clockwise (in the direction “A”).
    - b) If forward stitches are denser than reverse stitches, turn screw (d) anti-clockwise (in the direction “B”).
  - 4 Tighten nut (c) after adjustment.
- \*Note: When loosening nut (c) or screw (d), press the reverse push button.



### ADJUSTMENT OF PITCH DIFFERENCE IN STRETCH STITCH FEEDING

If there is any pitch difference between back and forward movement in stretch stitch feeding, it may be the cause of deformed patterns. Make adjustment as follows:

- 1 Set stitch length regulator knob at "4", pattern selector knob at "  " and stitch width regulator knob at "M".
- 2 Loosen nut (c).
- 3 a) When forward feeding is larger than backward feeding, turn stretch stitch adjusting screw (d) in the direction of (A).
- b) When forward feeding is smaller than backward feeding, turn stretch stitch adjusting screw (d) in the direction of (B).
- 4 Tighten nut (c) while holding stretch stitch rod lest it should be bent.



### ADJUSTMENT FOR "0" POSITION OF THREAD TENSION

It is the most desirable that the thread can get through without resistance when thread tension regulator dial is set at "0" and a little resistance can be felt when the dial is set at "1".

- 1 Lower presser bar lifter.
- 2 Set thread tension regulator dial at "5" and pull out the knob from the dial unit.
- 3 Loosen the leading screw until the thread can get through between the discs without resistance.
- 4 Set the dial indication "0" on thread tension regulator dial at the scribed line on thread tension bracket and push them as far as it will go.

